

DYSTRYBUTOR



TECHNICAL

GRZEGORZ TĘGOS

TECHNIKA NAPĘDU I TRANSMISJI MOCY

62-600 Koło, ul. Toruńska 212
tel. 0-63/ 27 25 478 / fax. 0-63/ 26 16 258

www.technical.pl
biuro@technical.pl

Sklep internetowy
www.sklep.technical.pl

Pasy termozgrzewalne profilowe



mafdel

brush belts



**CONTINUOUS
DYNAMIC
BRUSHING**



SOUPLEX or DEL/FLEX brush belts



Quality	Reference	Dimension (mm)	Mini pulley ϕ (mm)	Height of bristles	Number of rows	Pitch of bristles (mm)	Cross section of bristle (mm)	Nylon bristles
DEL/FLEX	DFVR13BR	13 x 8 A	120	27	1	8	40/100	
SOUPLEX	SXVM17BR	17 x 11 B	180	60	2	8	40/100	
SOUPLEX	SXVM22BR	22 x 14 C	240	60	3	8	40/100	

Special brush belts :

- Height
- cross section
- pitch
- special brushing

On demand.



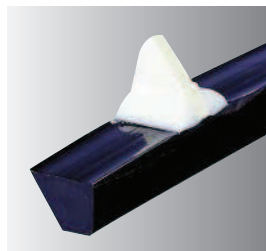
V belts with flights



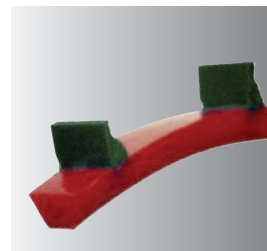
High flights.



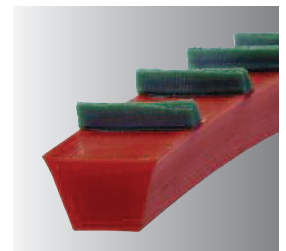
Flexible flights.



Flat welded triangles, for a minimum contact with the transported products.



Tough welded flights (several heights possible).



SF7 flights.



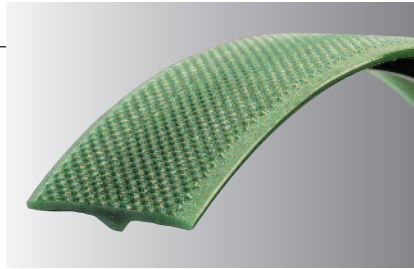
special profiles

ATC 63

For film-packaging machine

Cross section 25 x 2 mm
with 4 x 2.5 mm guide

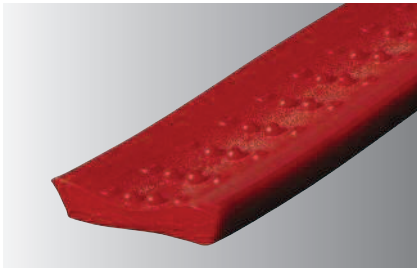
Rough or smooth surface, also
available in thinner widths.



Hardness : 92 ShA

Recommended pulley diameter : 60 mm

Minimum pulley diameter : 40 mm

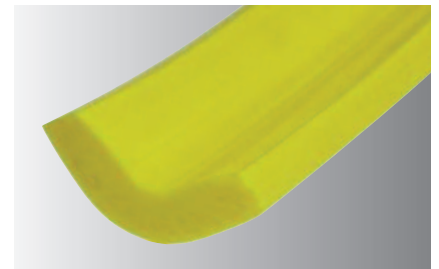


E 238 corn belt

Hardness : 90 ShA

Dimensions : 32 x 28 x 8 mm

U-shaped to convey corn.



U Profile

Hardness : 80 ShA

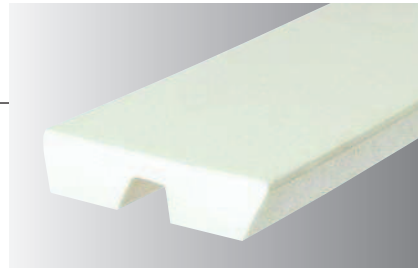
Dimensions : 40 x 10 mm

Cable-saw pulley covering.

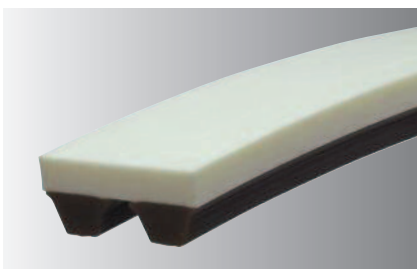
Double V belt 30 x 8 mm

in quality SOUPLEX or DEL/FLEX
Hardness : 85 ou 90 ShA

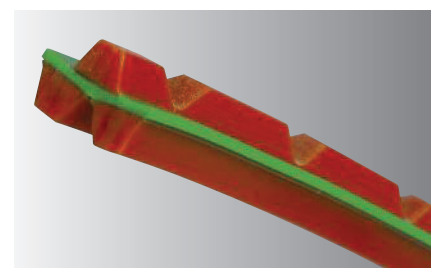
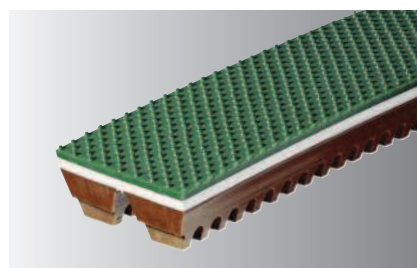
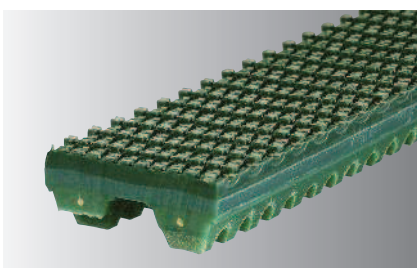
Also available with flights
and coatings.



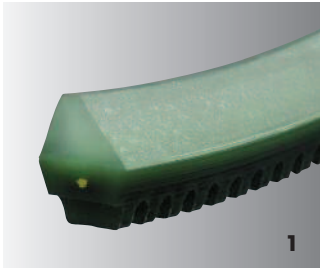
multiples V belts



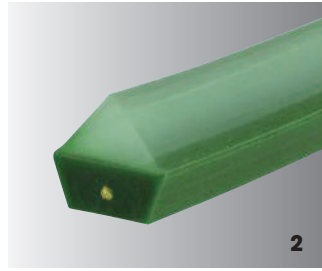
Cross section, width, thickness, lengths and hardness on demand.



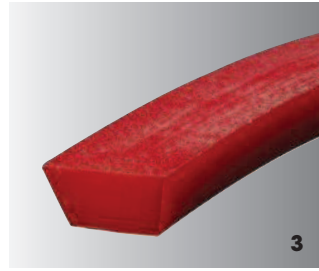
Other coatings.



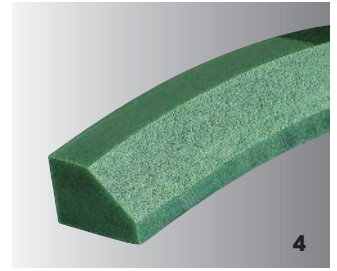
1
Asymmetric ridge-top V belt.



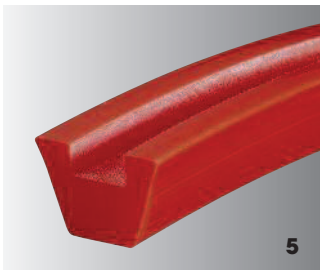
2
Machined ridge-top V belt.



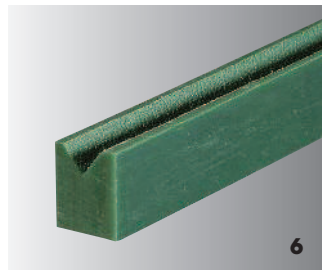
3
Machined V belt, to make it thinner and more flexible.



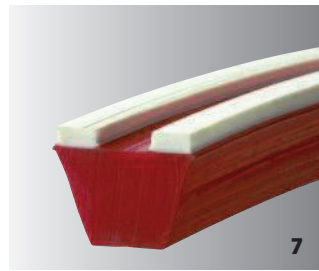
4
Special machined profiles on demand.



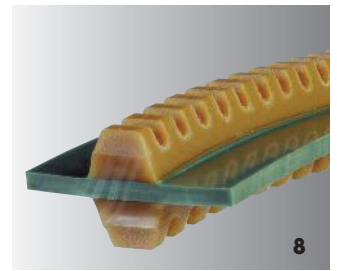
5
V belt with rectangular groove.



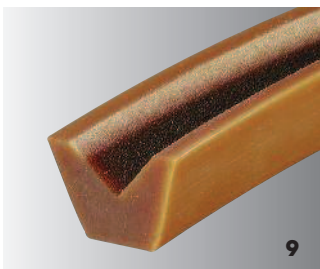
6
Rectangular belt with V groove.



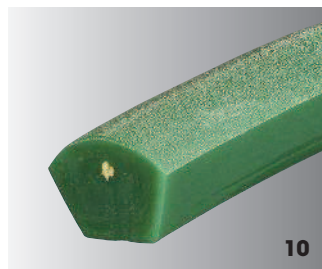
7
V belt with machined surface.



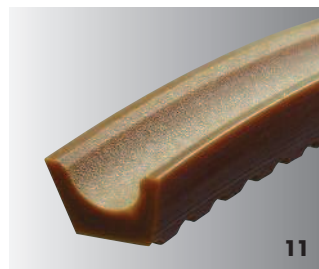
8
DEL/FLEX flat belt with two opposite V guides for alternate operation.



9
V belt with machined V groove (several depth possible).



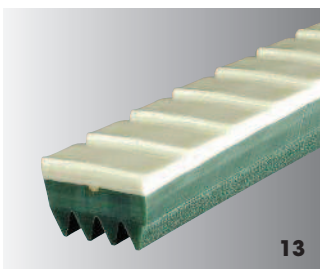
10
Dome-shaped V belt.



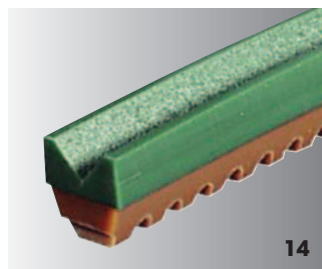
11
V belt with round groove (several depth possible).



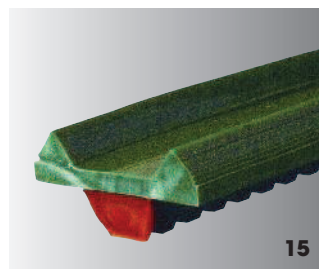
12
V belt machined on demand.



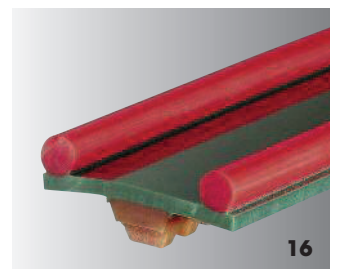
13
Special belt with saw-tooth surface and machined POLY-V bottom grooves.



14
V belt with V shape machine surface.

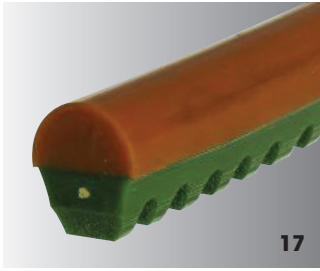


15
V belt with welded surface and V hold-in edges.

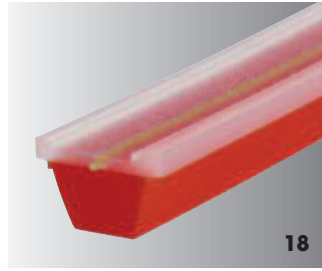


16
V belt with welded surface and round hold-in edges.

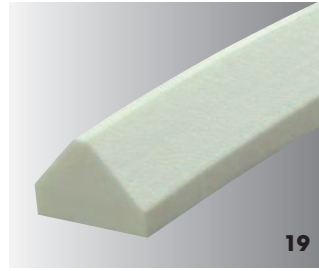




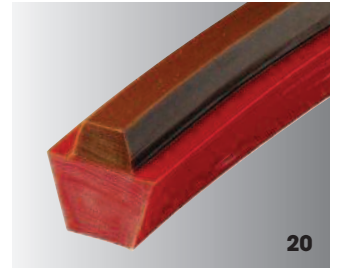
17
V belt with welded half round belt.



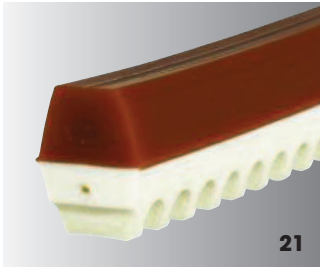
18
V belt with machined surface and aramid reinforcement.



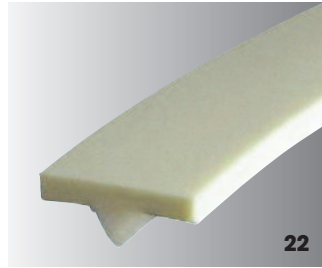
19
Asymmetric triangle belt.



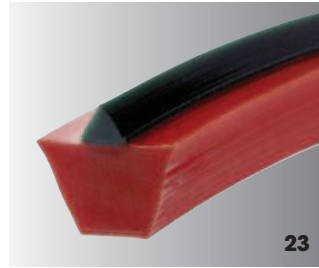
20
Hexagonal asymmetric SOUPLEX belt.



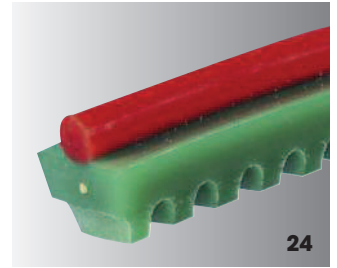
21
Cogged hexagonal belt.



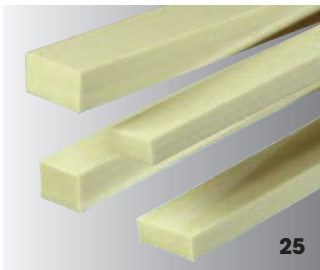
22
Flat belt with SR5 guide welded apex down.



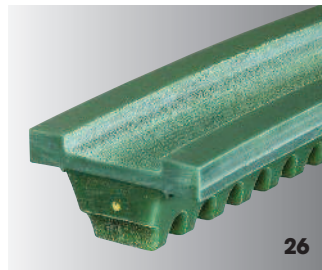
23
V belt with welded SF7 ridge.



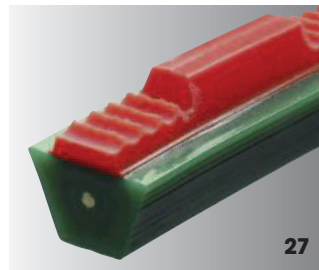
24
Round belt welded on top of a V belt.



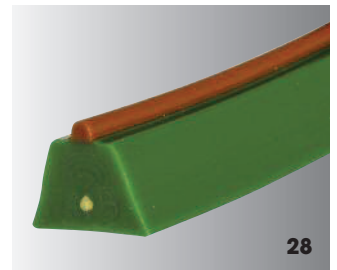
25
Rectified belt for mobile moulding.



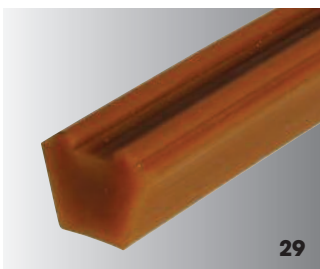
26
V belt with surface and machined hold-in edges.



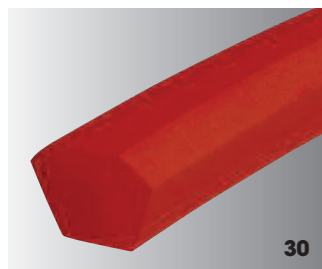
27
Hexagonal asymmetric belt with special cogging.



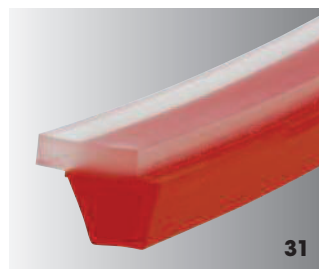
28
Round belt welded on the small base of a V belt.



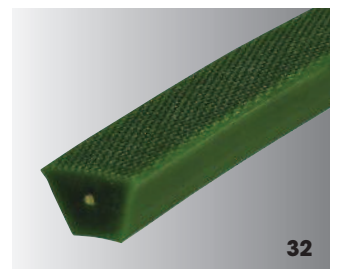
29
V belt with round edges.



30
Chamfered V belt.



31
V belt with out-of-center surface.



32
Embossed V belt.