

DYSTRYBUTOR



TECHNICAL

GRZEGORZ TĘGOS

TECHNIKA NAPIĘDU I TRANSMISJI MOCY

62-600 Koło, ul. Toruńska 212
tel. 0-63/ 27 25 478 / fax. 0-63/ 26 16 258

www.technical.pl
biuro@technical.pl

Sklep internetowy
www.sklep.technical.pl

Pasy termozgrzewalne profilowe



mafdel

Cross section (mm)

		mafdel		8 x 5	10 x 6	13 x 8	17 x 11	22 x 14	32 x 19	13 x 15	17 x 20	22 x 25	
Standard	Non-reinforced	DEL/ROC	100 ShA 55 ShD										
		DEL/FLEX	90 ShA										
		DEL/FLEX	90 ShA										
		SOUPLEX	85 ShA										
	Reinforced	DEL/SAN Aramid reinforced	95 ShA										
		H15 / H16 Aramid reinforced	92 ShA										
		SOUPLEX Aramid reinforced	85 ShA										
Ridge-Top	TOPGRIP	SOUPLEX Aramid reinforced	85 ShA										
		DEL/SAN Aramid reinforced	95 ShA										
		H15 / H16 Aramid reinforced	92 ShA										
		SOUPLEX Aramid reinforced	85 ShA										
		DEL/FLEX	90 ShA										
	SOUPLEX	85 ShA											



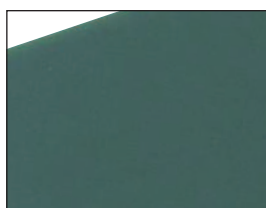
All V belts from 10 x 6 mm (Z) section can be cogged.
Cogging reduces minimum pulley diameter.



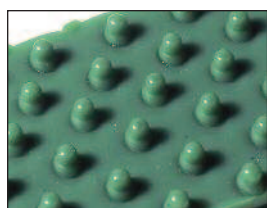
Coatings : from 10 x 6mm (Z) section
Wide range of smooth or textured coatings made of PU, PVC, felt, rubber.

standard surfaces

PU surfaces 85 ShA or 70 ShA



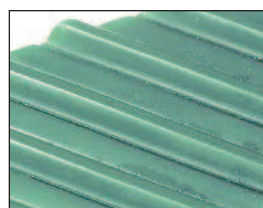
smooth



non-slip studded



saw-tooth



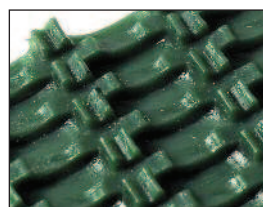
SG3 - fish bone



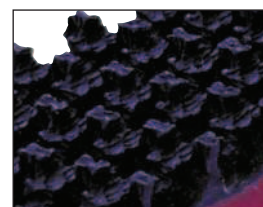
trellis



SUPERGRIP coatings

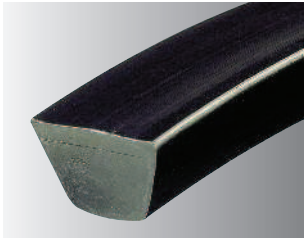


PVC



rubber

Hardness 100 ShA - 55 ShD
Pretension 0.5 - 2%
Temperature range -30°C/+90°C
Friction coefficient HDPE : 0.15 - 0.2 Steel : 0.35 - 0.4 Stainless steel : 0.5
Roll length 30 m



solid

DEL/ROC black

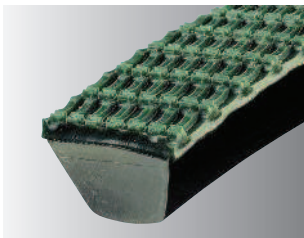


cogged

Reference	Traction force (daN)	Primitive pulley ϕ (mm) recommended	Primitive pulley ϕ (mm) mini
DRVN10	22	120	100
DRVN13	40	160	140
DRVN17	74	220	200
DRVN22	122	280	250

Dimension (mm)	Pretension
10x6 Z	2%
13x8 A	2%
17x11 B	2%
22x14 C	2%

Reference	Traction force (daN)	Primitive pulley ϕ (mm) recommended	Primitive pulley ϕ (mm) mini
DRVNCR10	15	100	80
DRVNCR13	28	120	100
DRVNCR17	51	160	140
DRVNCR22	85	240	190



solid

SUPERGRIP coating



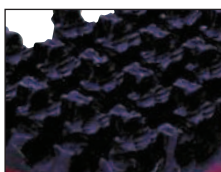
cogged

Reference	Traction force (daN)	Primitive pulley ϕ (mm) recommended	Primitive pulley ϕ (mm) mini
DRVN10NA	22	120	100
DRVN13NA	40	160	140
DRVN17NA	74	220	200
DRVN22NA	122	280	250

Dimension (mm)	Pretension
10x6 Z	2%
13x8 A	2%
17x11 B	2%
22x14 C	2%

Reference	Traction force (daN)	Primitive pulley ϕ (mm) recommended	Primitive pulley ϕ (mm) mini
DRVNCR10NA	15	100	80
DRVNCR13NA	28	120	100
DRVNCR17NA	51	160	140
DRVNCR22NA	85	240	190

other coatings *



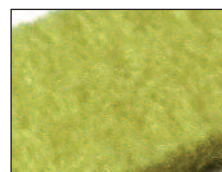
RUBBER SUPERGRIP
(code NC)

- Good grip.
- Resistance to abrasion.
- Resistance to temperature.



POLYESTER FELT
(code FP)

- Conveying with accumulation of fragile products.
- Low friction coefficient.



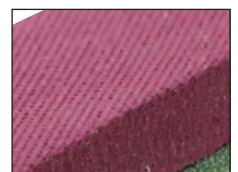
ARAMID FELT
(code FA)

- High resistance to temperature.



FOAM
(code MS)

- Low Hardness.
- Different thicknesses available.



LINATECH
(code LI)

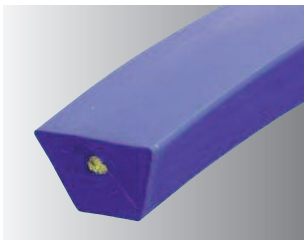
- High resistance to abrasion.
- High grip.
- Rough surface, thickness 2 to 10 mm.



*Reference : complete the belt reference with the coating reference.

DEL/SAN reinforced V belts

Hardness 95 ShA
Pretension see table
Temperature range -20°C/+70°C
Friction coefficient HDPE : 0.20 Steel : 0.4 Stainless steel : 0.5
Roll length 30 m



solid



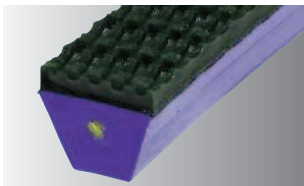
cogged

DEL/SAN blue Aramid reinforced

Reference	Traction force (daN)	Primitive pulley ϕ (mm) recommended	mini
DSVBAR13	35	150	130
DSVBAR17	60	180	160
DSVBAR22	95	260	240

Dimension (mm)	Pretension
13x8 A	1%
17x11 B	1.5%
22x14 C	1.5%

Reference	Traction force (daN)	Primitive pulley ϕ (mm) recommended	mini
DSVBAC13	35	120	100
DSVBAC17	60	150	130
DSVBAC22	95	210	180



solid



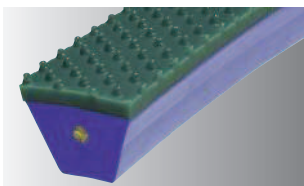
cogged

SUPERGRIP coating

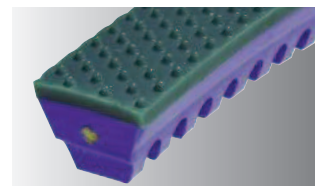
Reference	Traction force (daN)	Primitive pulley ϕ (mm) recommended	mini
DSVBAR13NA	35	150	130
DSVBAR17NA	60	180	160
DSVBAR22NA	95	260	240

Dimension (mm)	Pretension
13x8 A	1%
17x11 B	1.5%
22x14 C	1.5%

Reference	Traction force (daN)	Primitive pulley ϕ (mm) recommended	mini
DSVBAC13NA	35	120	100
DSVBAC17NA	60	150	130
DSVBAC22NA	95	210	180



solid



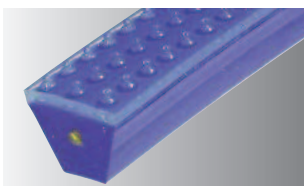
cogged

SOUPLEX 85 ShA surface

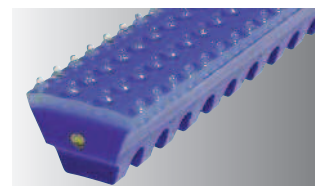
Reference	Traction force (daN)	Primitive pulley ϕ (mm) recommended	mini
DSVBAR13SPI	35	170	150
DSVBAR17SPI	60	200	180
DSVBAR22SPI	95	280	260

Dimension (mm)	Pretension
13x8 A	1%
17x11 B	1.5%
22x14 C	1.5%

Reference	Traction force (daN)	Primitive pulley ϕ (mm) recommended	mini
DSVBAC13SPI	35	140	120
DSVBAC17SPI	60	170	150
DSVBAC22SPI	95	230	200



solid



cogged

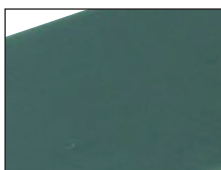
TOTALGRIP 70 ShA surface

Reference	Traction force (daN)	Primitive pulley ϕ (mm) recommended	mini
DSVBAR13TPI	35	160	140
DSVBAR17TPI	60	190	170
DSVBAR22TPI	95	270	250

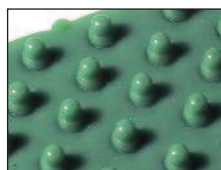
Dimension (mm)	Pretension
13x8 A	1%
17x11 B	1.5%
22x14 C	1.5%

Reference	Traction force (daN)	Primitive pulley ϕ (mm) recommended	mini
DSVBAC13TPI	35	130	110
DSVBAC17TPI	60	160	140
DSVBAC22TPI	95	220	190

other surfaces *



SMOOTH



STUDED



SAW-TOOTH



SG3



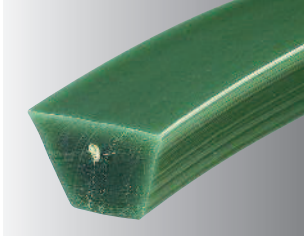
TRELLIS

Reference	SMOOTH	STUDED	SAW-TOOTH	SG3	TRELLIS
Souplex 85 ShA	SLI	SPI	SUS	SSG	SLO
Totalgrip 70 ShA	TLI	TPI	TUS	TSG	TLO

*Reference : complete the belt reference with the coating reference.

H15/H16 reinforced V belts

Hardness 92 ShA
Prefension see table
Temperature range -20°C/+70°C
Friction coefficient HDPE : 0.25 Steel : 0.45 Stainless steel : 0.55
Roll length 30 m



H15
solid



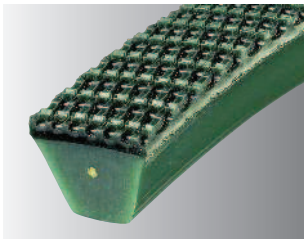
H16
cogged

green Aramid reinforced

Reference	Traction force (daN)	Primitive pulley ϕ (mm) recommended	Dimension (mm)	Pretension
H15GAR10	15	110	10x6 Z	1%
H15GAR13	30	140	13x8 A	1%
H15GAR17	50	170	17x11 B	1.5%
H15GAR22	75	250	22x14 C	1.5%
H15GAR32	140	350	32x19 D	1.5%

Reference	Traction force (daN)	Primitive pulley ϕ (mm) recommended	Dimension (mm)	Pretension
H16GAC10	15	80	10x6 Z	1%
H16GAC13	30	100	13x8 A	1%
H16GAC17	50	130	17x11 B	1.5%
H16GAC22	75	180	22x14 C	1.5%
H16GAC32	140	300	32x19 D	1.5%

Reference	Traction force (daN)	Primitive pulley ϕ (mm) recommended	Dimension (mm)	Pretension
H16GAC10	15	80	10x6 Z	1%
H16GAC13	30	100	13x8 A	1%
H16GAC17	50	130	17x11 B	1.5%
H16GAC22	75	180	22x14 C	1.5%
H16GAC32	140	300	32x19 D	1.5%



H15
solid

SUPERGRIP coating



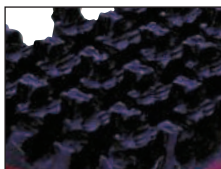
H16
cogged

Reference	Traction force (daN)	Primitive pulley ϕ (mm) recommended	Dimension (mm)	Pretension
H15GAR10NA	15	110	10x6 Z	1%
H15GAR13NA	30	140	13x8 A	1%
H15GAR17NA	50	170	17x11 B	1.5%
H15GAR22NA	75	250	22x14 C	1.5%
H15GAR32NA	140	350	32x19 D	1.5%

Reference	Traction force (daN)	Primitive pulley ϕ (mm) recommended	Dimension (mm)	Pretension
H16GAC10NA	15	80	10x6 Z	1%
H16GAC13NA	30	100	13x8 A	1%
H16GAC17NA	50	130	17x11 B	1.5%
H16GAC22NA	75	180	22x14 C	1.5%
H16GAC32NA	140	300	32x19 D	1.5%

Reference	Traction force (daN)	Primitive pulley ϕ (mm) recommended	Dimension (mm)	Pretension
H16GAC10NA	15	80	10x6 Z	1%
H16GAC13NA	30	100	13x8 A	1%
H16GAC17NA	50	130	17x11 B	1.5%
H16GAC22NA	75	180	22x14 C	1.5%
H16GAC32NA	140	300	32x19 D	1.5%

other coatings *



RUBBER SUPERGRIP
(code NC)



POLYESTER FELT
(code FP)



ARAMID FELT
(code FA)



FOAM
(code MS)



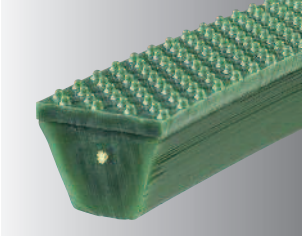
LINATECH
(code LI)



*Reference : complete the belt reference with the coating reference.

H15/H16 reinforced V belts

H15
solid



SOUPLEX 85 ShA surface

Reference	Traction force (daN)	Primitive pulley ϕ (mm) recommended	mini
H15GAR10SPI	15	130	110
H15GAR13SPI	30	160	130
H15GAR17SPI	50	190	170
H15GAR22SPI	75	270	250
H15GAR32SPI	140	370	320

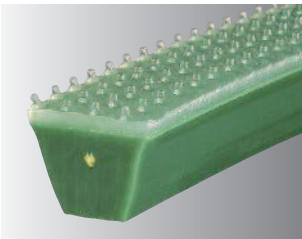
Dimension (mm)	Pretension
10x6 Z	1%
13x8 A	1%
17x11 B	1.5%
22x14 C	1.5%
32x19 D	1.5%

H16
cogged



Reference	Traction force (daN)	Primitive pulley ϕ (mm) recommended	mini
H16GAC10SPI	15	100	80
H16GAC13SPI	30	120	100
H16GAC17SPI	50	150	130
H16GAC22SPI	75	200	170
H16GAC32SPI	140	320	270

H15
solid

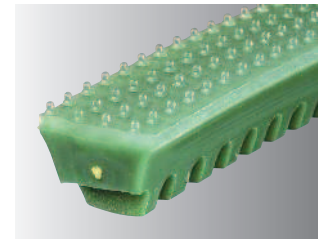


TOTALGRIP 70 ShA surface

Reference	Traction force (daN)	Primitive pulley ϕ (mm) recommended	mini
H15GAR10TPI	15	120	100
H15GAR13TPI	30	150	120
H15GAR17TPI	50	180	160
H15GAR22TPI	75	260	240
H15GAR32TPI	140	360	310

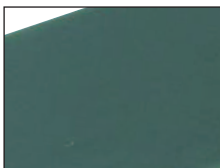
Dimension (mm)	Pretension
10x6 Z	1%
13x8 A	1%
17x11 B	1.5%
22x14 C	1.5%
32x19 D	1.5%

H16
cogged

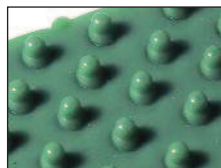


Reference	Traction force (daN)	Primitive pulley ϕ (mm) recommended	mini
H16GAC10TPI	15	90	75
H16GAC13TPI	30	110	80
H16GAC17TPI	50	140	120
H16GAC22TPI	75	190	160
H16GAC32TPI	140	310	260

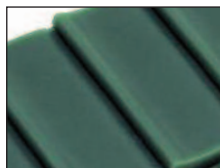
other surfaces *



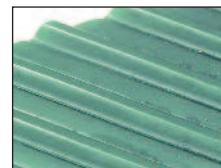
SMOOTH



STUDED



SAW-TOOTH



SG3



TRELLIS

Reference

Souplex 85 ShA

Totalgrip 70 ShA

SLI

TLI

SPI

TPI

SUS

TUS

SSG

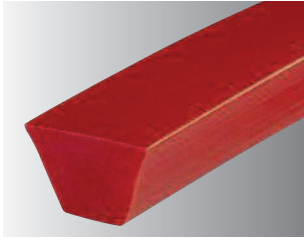
TSG

SLO

TLO

*Reference : complete the belt reference with the coating reference.

Hardness 90 ShA
Pretension 3 - 6%
Temperature range -20°C/+70°C
Friction coefficient HDPE : 0.25 Steel : 0.5 Stainless steel : 0.6
Roll length 30 m

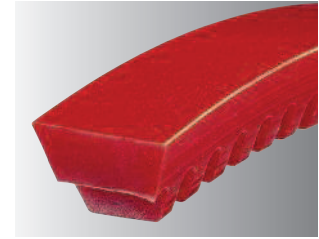


solid

Reference	Traction force (daN)	Primitive pulley ϕ (mm) recommended	Primitive pulley ϕ (mm) mini
DFVR8	7	55	50
DFVR10	11	80	65
DFVR13	20	100	80
DFVR17	36	150	130
DFVR22	60	220	180
DFVR32	118	300	250

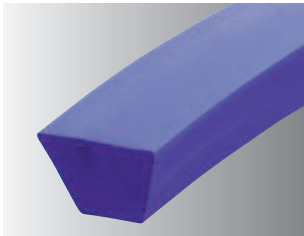
DEL/FLEX red

Dimension (mm)	Pretension
8x5	5%
10x6 Z	5%
13x8 A	5%
17x11 B	5%
22x14 C	5%
32x19 D	5%



cogged

Reference	Traction force (daN)	Primitive pulley ϕ (mm) recommended	Primitive pulley ϕ (mm) mini
-	-	-	-
DFVRCR10	7	60	50
DFVRCR13	14	80	60
DFVRCR17	25	110	90
DFVRCR22	42	150	120
DFVRCR32	82	220	180



solid

Reference	Traction force (daN)	Primitive pulley ϕ (mm) recommended	Primitive pulley ϕ (mm) mini
DFVB8	7	55	50
DFVB10	11	80	65
DFVB13	20	100	80

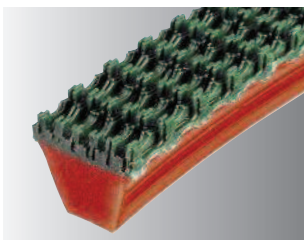
DEL/FLEX blue

Dimension (mm)	Pretension
8x5	5%
10x6 Z	5%
13x8 A	5%



cogged

Reference	Traction force (daN)	Primitive pulley ϕ (mm) recommended	Primitive pulley ϕ (mm) mini
-	-	-	-
DFVBCR10	7	60	50
DFVBCR13	14	80	60

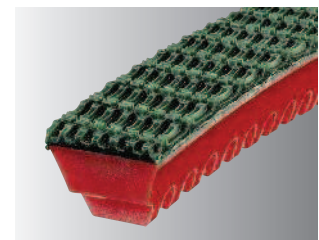


solid

Reference	Traction force (daN)	Primitive pulley ϕ (mm) recommended	Primitive pulley ϕ (mm) mini
DFVR10NA	11	80	65
DFVR13NA	20	100	80
DFVR17NA	36	150	130
DFVR22NA	60	220	180
DFVR32NA	118	300	250

SUPERGRIP coating

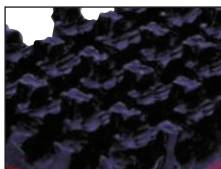
Dimension (mm)	Pretension
10x6 Z	5%
13x8 A	5%
17x11 B	5%
22x14 C	5%
32x19 D	5%



cogged

Reference	Traction force (daN)	Primitive pulley ϕ (mm) recommended	Primitive pulley ϕ (mm) mini
DFVRCR10NA	7	60	50
DFVRCR13NA	14	80	60
DFVRCR17NA	25	110	90
DFVRCR22NA	42	150	120
DFVRCR32NA	82	220	180

other coatings *



RUBBER SUPERGRIP
(code NC)



POLYESTER FELT
(code FP)



ARAMID FELT
(code FA)



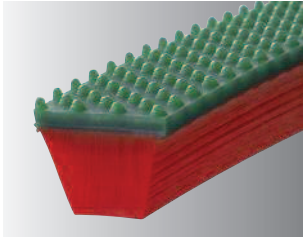
FOAM
(code MS)



LINATECH
(code LI)

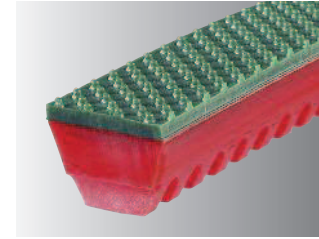


*Reference : complete the belt reference with the coating reference.



solid

SOUPLEX 85 ShA surface

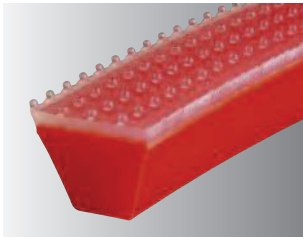


cogged

Reference	Traction force (daN)	Primitive pulley ϕ (mm) recommended	(mm) mini
DFVR10SPI	15	90	80
DFVR13SPI	25	120	100
DFVR17SPI	43	170	150
DFVR22SPI	69	240	210
DFVR32SPI	132	340	260

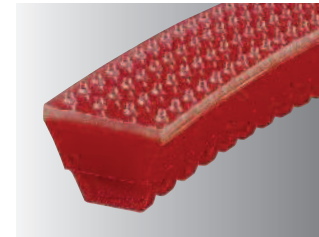
Dimension (mm)	Pretension
10x6 Z	5%
13x8 A	5%
17x11 B	5%
22x14 C	5%
32x19 D	5%

Reference	Traction force (daN)	Primitive pulley ϕ (mm) recommended	(mm) mini
DFVRCR10SPI	11	80	70
DFVRCR13SPI	19	100	80
DFVRCR17SPI	32	130	110
DFVRCR22SPI	51	170	140
DFVRCR32SPI	96	240	200



solid

TOTALGRIP 70 ShA surface



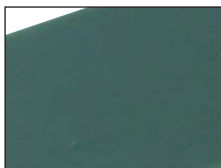
cogged

Reference	Traction force (daN)	Primitive pulley ϕ (mm) recommended	(mm) mini
DFVR10TPI	11	85	75
DFVR13TPI	20	110	90
DFVR17TPI	36	160	140
DFVR22TPI	60	230	200
DFVR32TPI	118	310	260

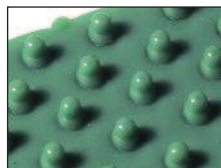
Dimension (mm)	Pretension
10x6 Z	5%
13x8 A	5%
17x11 B	5%
22x14 C	5%
32x19 D	5%

Reference	Traction force (daN)	Primitive pulley ϕ (mm) recommended	(mm) mini
DFVRCR10TPI	7	70	60
DFVRCR13TPI	14	90	75
DFVRCR17TPI	25	120	100
DFVRCR22TPI	42	160	130
DFVRCR32TPI	82	230	190

other surfaces *



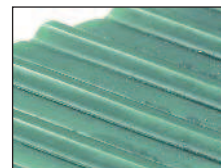
SMOOTH



STUDED



SAW-TOOTH



SG3



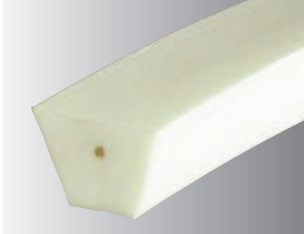
TRELLIS

Reference	SMOOTH	STUDED	SAW-TOOTH	SG3	TRELLIS
Souplex 85 ShA	SLI	SPI	SUS	SSG	SLO
Totalgrip 70 ShA	TLI	TPI	TUS	TSG	TLO

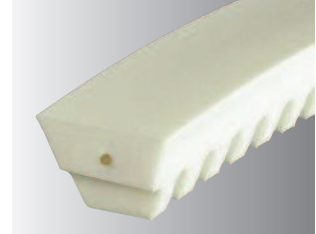
*Reference : complete the belt reference with the coating reference.

SOUPLEX reinforced V belts

Hardness 85 ShA
Pretension see table
Temperature range -20°C/+60°C
Friction coefficient HDPE : 0.35 Steel : 0.6 Stainless steel : 0.7
Roll length 30 m



solid



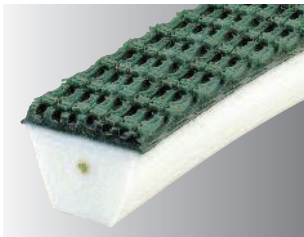
cogged

SOUPLEX white Aramid reinforced

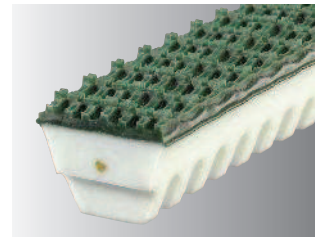
Reference	Traction force (daN)	Primitive pulley ϕ (mm) recommended	(mm) mini
SXVWAR10	10	90	75
SXVWAR13	25	100	80
SXVWAR17	40	150	130
SXVWAR22	60	220	200
SXVWAR32	120	280	250

Dimension (mm)	Pretension
10x6 Z	0.5%
13x8 A	0.5%
17x11 B	1%
22x14 C	1.5%
32x19 D	1.5%

Reference	Traction force (daN)	Primitive pulley ϕ (mm) recommended	(mm) mini
SXVWAC10	10	60	50
SXVWAC13	25	80	60
SXVWAC17	40	110	90
SXVWAC22	60	160	130
SXVWAC32	120	220	180



solid



cogged

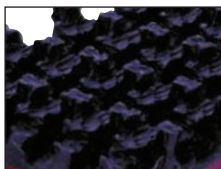
SUPERGRIP coating

Reference	Traction force (daN)	Primitive pulley ϕ (mm) recommended	(mm) mini
SXVWAR10NA	10	90	75
SXVWAR13NA	25	100	80
SXVWAR17NA	40	150	130
SXVWAR22NA	60	220	200
SXVWAR32NA	120	280	250

Dimension (mm)	Pretension
10x6 Z	0.5%
13x8 A	0.5%
17x11 B	1%
22x14 C	1.5%
32x19 D	1.5%

Reference	Traction force (daN)	Primitive pulley ϕ (mm) recommended	(mm) mini
SXVWAC10NA	10	60	50
SXVWAC13NA	25	80	60
SXVWAC17NA	40	110	90
SXVWAC22NA	60	160	130
SXVWAC32NA	120	220	180

other coatings *



RUBBER SUPERGRIP
(code NC)



POLYESTER FELT
(code FP)



ARAMID FELT
(code FA)



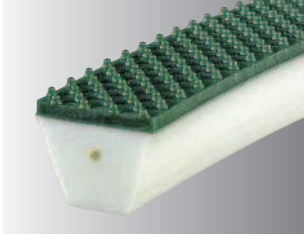
FOAM
(code MS)



LINATECH
(code LI)



*Reference : complete the belt reference with the coating reference.



solid

SOUPLEX 85 ShA surface

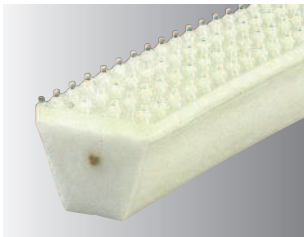


cogged

Reference	Traction force (daN)	Primitive pulley ϕ (mm) recommended	Primitive pulley ϕ (mm) mini
-	-	-	-
SXVWAR13SPI	25	120	100
SXVWAR17SPI	40	170	150
SXVWAR22SPI	60	240	210
SXVWAR32SPI	120	330	280

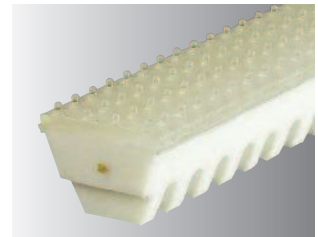
Dimension (mm)	Pretension
10x6 Z	0.5%
13x8 A	0.5%
17x11 B	1%
22x14 C	1.5%
32x19 D	1.5%

Reference	Traction force (daN)	Primitive pulley ϕ (mm) recommended	Primitive pulley ϕ (mm) mini
SXVWAC10SPI	10	90	75
SXVWAC13SPI	25	100	80
SXVWAC17SPI	40	130	110
SXVWAC22SPI	60	180	150
SXVWAC32SPI	120	240	200



solid

TOTALGRIP 70 ShA surface



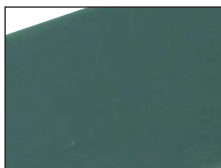
cogged

Reference	Traction force (daN)	Primitive pulley ϕ (mm) recommended	Primitive pulley ϕ (mm) mini
-	-	-	-
SXVWAR13TPI	25	110	90
SXVWAR17TPI	40	160	140
SXVWAR22TPI	60	230	200
SXVWAR32TPI	120	300	250

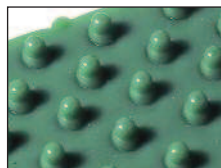
Dimension (mm)	Pretension
10x6 Z	0.5%
13x8 A	0.5%
17x11 B	1%
22x14 C	1.5%
32x19 D	1.5%

Reference	Traction force (daN)	Primitive pulley ϕ (mm) recommended	Primitive pulley ϕ (mm) mini
SXVWAC10TPI	10	80	70
SXVWAC13TPI	25	90	75
SXVWAC17TPI	40	120	100
SXVWAC22TPI	60	170	140
SXVWAC32TPI	120	230	190

other surfaces *



SMOOTH



STUDED



SAW-TOOTH



SG3



TRELLIS

Reference

Souplex 85 ShA

SLI

SPI

SUS

SSG

SLO

Totalgrip 70 ShA

TLI

TPI

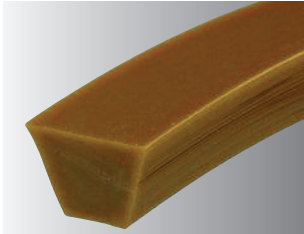
TUS

TSG

TLO

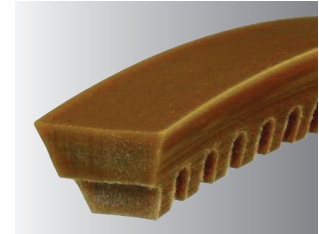
*Reference : complete the belt reference with the coating reference.

Hardness 85 ShA
Pretension 5 - 8%
Temperature range -20°C/+60°C
Friction coefficient HDPE : 0.35 Steel : 0.6 Stainless steel : 0.7
Roll length 30 m



solid

SOUPLEX brown

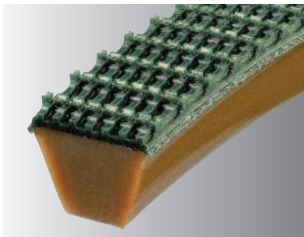


cogged

Reference	Traction force (daN)	Primitive pulley ϕ (mm) recommended	Primitive pulley ϕ (mm) mini
SXVM8	4	50	40
SXVM10	6	70	55
SXVM13	12	80	70
SXVM17	22	130	110
SXVM22	36	170	130
SXVM32	71	250	220

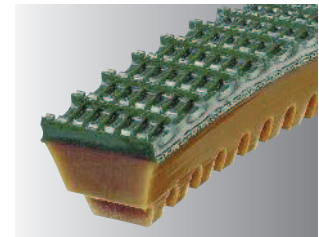
Dimension (mm)	Pretension
8x5	8%
10x6 Z	8%
13x8 A	8%
17x11 B	8%
22x14 C	8%
32x19 D	8%

Reference	Traction force (daN)	Primitive pulley ϕ (mm) recommended	Primitive pulley ϕ (mm) mini
-	-	-	-
SXVMCR10	4	50	40
SXVMCR13	8	60	50
SXVMCR17	15	90	70
SXVMCR22	25	130	110
SXVMCR32	50	180	150



solid

SUPERGRIP coating



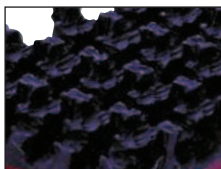
cogged

Reference	Traction force (daN)	Primitive pulley ϕ (mm) recommended	Primitive pulley ϕ (mm) mini
SXVM8NA	4	50	40
SXVM10NA	6	70	55
SXVM13NA	12	80	70
SXVM17NA	22	130	110
SXVM22NA	36	170	130
SXVM32NA	71	250	220

Dimension (mm)	Pretension
8x5	8%
10x6 Z	8%
13x8 A	8%
17x11 B	8%
22x14 C	8%
32x19 D	8%

Reference	Traction force (daN)	Primitive pulley ϕ (mm) recommended	Primitive pulley ϕ (mm) mini
-	-	-	-
SXVMCR10NA	4	50	40
SXVMCR13NA	8	60	50
SXVMCR17NA	15	90	70
SXVMCR22NA	25	130	110
SXVMCR32NA	50	180	150

other coatings *



RUBBER SUPERGRIP
(code NC)



POLYESTER FELT
(code FP)



ARAMID FELT
(code FA)



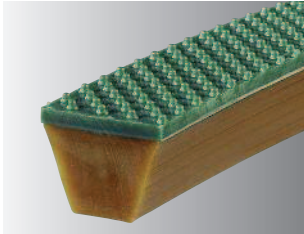
FOAM
(code MS)



LINATECH
(code LI)

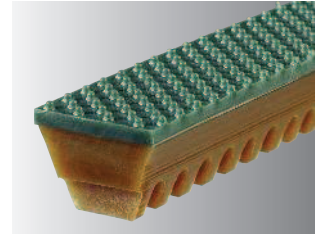


*Reference : complete the belt reference with the coating reference.



solid

SOUPLEX 85 ShA surface

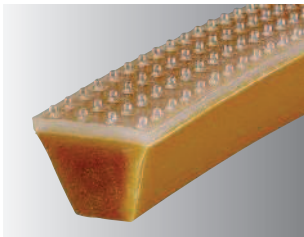


cogged

Reference	Traction force (daN)	Primitive pulley ϕ (mm) recommended	Primitive pulley ϕ (mm) mini
SXVM10SPI	10	80	70
SXVM13SPI	17	100	90
SXVM17SPI	29	150	130
SXVM22SPI	45	190	150
SXVM32SPI	85	280	240

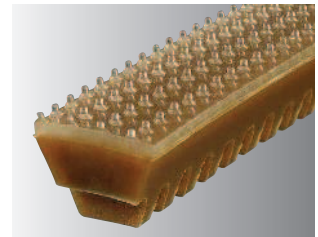
Dimension (mm)	Pretension
10x6 Z	8%
13x8 A	8%
17x11 B	8%
22x14 C	8%
32x19 D	8%

Reference	Traction force (daN)	Primitive pulley ϕ (mm) recommended	Primitive pulley ϕ (mm) mini
SXVMCR10SPI	8	70	60
SXVMCR13SPI	13	80	70
SXVMCR17SPI	22	110	90
SXVMCR22SPI	34	150	130
SXVMCR32SPI	64	200	170



solid

TOTALGRIP 70 ShA surface



cogged

Reference	Traction force (daN)	Primitive pulley ϕ (mm) recommended	Primitive pulley ϕ (mm) mini
SXVM10TPI	6	75	65
SXVM13TPI	12	90	80
SXVM17TPI	22	140	120
SXVM22TPI	36	180	140
SXVM32TPI	71	260	230

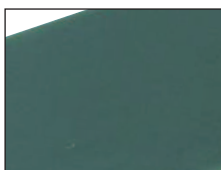
Dimension (mm)	Pretension
10x6 Z	8%
13x8 A	8%
17x11 B	8%
22x14 C	8%
32x19 D	8%

Reference	Traction force (daN)	Primitive pulley ϕ (mm) recommended	Primitive pulley ϕ (mm) mini
SXVMCR10TPI	4	60	50
SXVMCR13TPI	8	70	60
SXVMCR17TPI	15	100	80
SXVMCR22TPI	25	140	120
SXVMCR32TPI	50	190	160

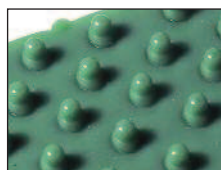
other surfaces *



Reference



SMOOTH



STUDED



SAW-TOOTH



SG3



TRELLIS

Souplex 85 ShA
Totalgrip 70 ShA

SLI
TLI

SPI
TPI

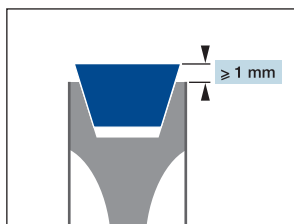
SUS
TUS

SSG
TSG

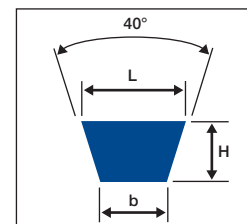
SLO
TLO

*Reference : complete the belt reference with the coating reference.

advice / recommendations

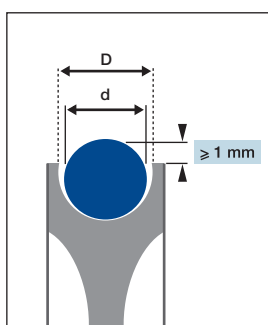


Belt section	Z	A	B	C	D
L x H (mm)	10 x 6	13 x 8	17 x 11	22 x 14	32 x 19
b (mm)	6	7.5	9	12	18



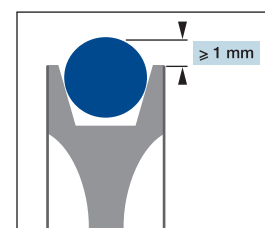
A V belt is driven by its sides. The belt must come off its pulley by 1mm, so that the product conveyed may not touch the pulley.

driving round belts



A round belt is driven by a round-groove pulley. The diameter of this round groove should be 1mm greater than the diameter of the belt for smaller round belts, and 2mm greater for round belts from diam. 12 mm on.

If the belt runs in wet or greasy conditions, we recommend that the round belt be driven by a V-groove pulley. It will substantially improve the efficiency of the driving and will prevent the belt from slipping.



$$d < 12 \text{ mm} \quad D = d + 1 \text{ mm}$$

$$d \geq 12 \text{ mm} \quad D = d + 2 \text{ mm}$$

Diameter of the round belt d (mm)	3 à 6	8	10	12	15	18
V groove of the driving pulley L x H (mm)	-	10 x 6 (Z)	13 x 8 (A)	17 x 11 (B)	17 x 11 (B)	22 x 14 (C)

guiding round and V belts

We recommend the using of HDPE runners. They will improve the load capacity of your belts, thanks to a very low friction coefficient. For example, the friction coefficient on a HDPE runner is twice as low as on a steel runner. The belt would thus bear twice as much weight on a HDPE runner than on a steel runner.



The diameter of the round groove should be 1 to 2 mm greater than the diameter of the belt.

V belts slip on their small base. The V groove of the runner should be 1 mm wider than the belt. This will prevent the V belt from being blocked into its runner.

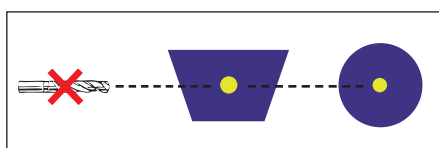


We recommend that the extremities of the runner be chamfered. This avoids any risk of fits and starts as the belt arrives on its runner. This recommendation is even more important if your belt is cogged.

parallel belts

For belts mounted in parallel, it is strongly recommended that the return pulleys run independently. This compensates for differences in linear speed between the belts, thus avoiding abnormal tension which might cause jerky operation.

welding reinforced belts



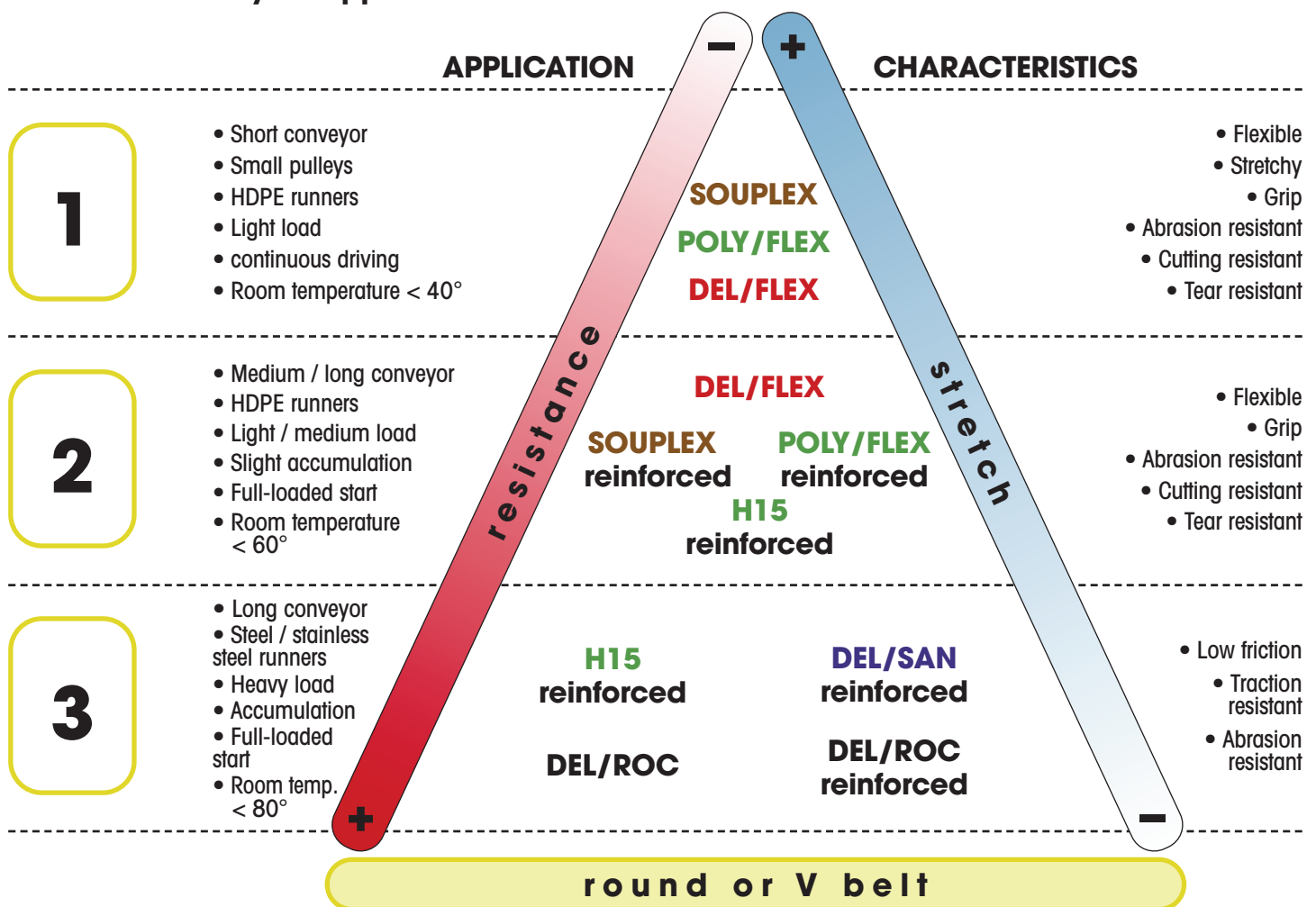
Our reinforced belts are welded in the same way as the other non-reinforced belts, **WITHOUT REMOVING THE REINFORCEMENT**. This avoids all the problems associated with drilling. Our special reinforcement does not fuse at the welding temperature of our thermostated irons (260°C). There is therefore no danger of contaminating the weld.



To choose the right belt, you need to know the characteristics of the conveyor on which it will run, its working conditions and the product it will convey.

CONVEYOR	PRODUCT TRANSPORTED	WORKING CONDITIONS
length of the conveyor	maximum transported weight	continuous or stop-and-go driving
diameter of the pulleys	nature of the product	accumulation
type of support	spreading of the weight along the conveyor	other efforts, pressure, etc.
length of the tensioning system	temperature of the product	room temperature
number of belts		
inclination		

Choose up, amongst the 3 following categories, which one best matches to your application :



Into the selected category, choose the quality of belt whose general characteristics, such as **resistance, hardness, friction coefficient, stretch, operating temperature...** are the closest to the ones your are looking for.

Exemples :

- In case of accumulation of the products transported on the belt, choose the quality with the lowest friction coefficient.
- To convey heavy loads, choose the strongest and less stretchy quality.

NB: The stretch of low-hardness belts (85 and 90 shA), such as SOUPLEX, POLY/FLEX and DEL/FLEX, allows you to mount them with pretension (shortened of a length that corresponds to the elongation that the belt would need to work properly), and in some cases to avoid the using of a tensioning system.

The mounting of the hardest belts (95 and 100 shA) and/or reinforced belts requires the using of a tensioning system or tensioning tools (page 34).



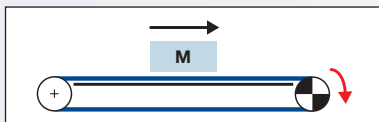
conveying / simplified calculations

SYMBOLE	MEASURES	DESIGNATION	BELT CHARACTERISTIC (in catalogue)
M	Kg	Transported load	
Mmax	Kg	Maximum load limit per belt	
Mtotal	Kg	Maximum load limit on all the belts	
Mr	Kg	Weight of all the tangentially driven rollers	
L	m	Conveyor length	
H	m	Conveyor height	
F	daN	Minimum traction force for the continuous driving of the load M	
F'	daN	Minimum traction force for full-loaded starts with the load M	
Ft	daN	Traction force of the chosen belt	X
t	%	Stretch corresponding to the traction force of the belt Ft	X
Cfp		Friction coefficient on the transported product on the belt	
Cf		Friction coefficient of the belt on its runner	X
Cr		Rolling coefficient of the belt on its support (0.05 to 0.1 according to the conditions: smooth support, bearings,...)	
Cs		Safety coefficient	

type of conveyor

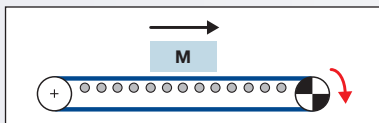
simplified calculation of the needed traction force to drive a specific load

simplified calculation of the maximum load limit per belt



$$F = M \times Cf$$

$$M_{max} = Ft / Cf$$



$$F = M \times Cr$$

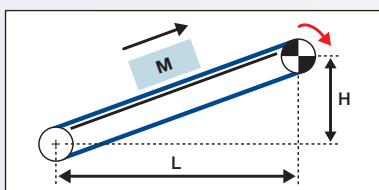
$$M_{max} = Ft / Cr$$



In case of accumulation, take into account the friction coefficient of the product to convey on the belt. You will add this data to the friction coefficient of the belt on its runner :

$$F = M \times (Cf + Cfp)$$

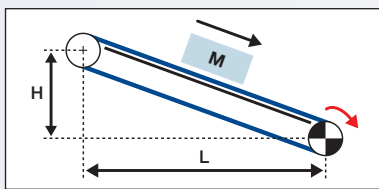
$$M_{max} = Ft / (Cf + Cfp)$$



If your conveyor is inclined, consider the difference in height :

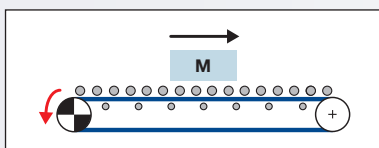
$$F = M \times Cf + M \times (H / L)$$

$$M_{max} = Ft / (Cf + H / L)$$



$$F = M \times Cf - M \times (H / L)$$

$$M_{max} = Ft / (Cf - H / L)$$



Always take into account the weight of all the tangentially driven rollers in your calculations.

$$F = (M + Mr) \times Cr$$

$$M_{max} = (Ft / Cr) - Mr$$

For all type of conveyors, in case of **STOP-AND-GO DRIVING** (full-loaded starts) :

The traction force **F** determined above must be multiplied by 2.

$$F' = F \times 2$$

As you calculate **Mmax**, only take into account half the traction force of the selected belt.

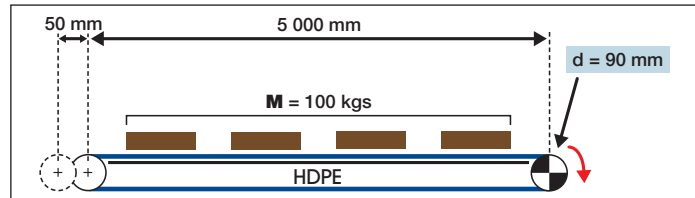
Replace **Ft** by **Ft/2**

1/ EXISTING MACHINE

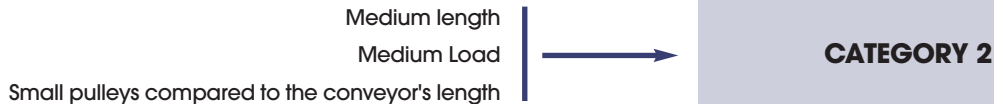
CONSIDER THE CHARACTERISTICS OF THE CONVEYOR, OF THE TRANSPORTED PRODUCT, AS WELL AS THE GENERAL WORKING CONDITIONS.

CHOOSING THE MOST ADEQUATE BELT.

Continuous conveying of wood boards on two parallel 17 x 11 mm V belts sliding on HDPE runners.



Choosing the belt category (page 41)



Choosing the quality of the belt



Checking the pulley diameter out

d = 90 mm

We strongly recommend to respect the recommended pulley diameter. Too small pulleys would damage the belt and reduce its life time.

	SOUPLEX reinforced & cogged 17 x 11 mm	H16 reinforced & cogged 17 x 11 mm
ø recommended (mm)	110	130
ø mini (mm)	90	110



Calculating the maximum load limit

Total load on the conveyor (kgs) **M = 100 kgs**

Traction force of the selected belt
Corresponding elongation
Friction coefficient on HDPE
Maximum load limit per belt
Maximum load limit on 2 belts
Safety factor

	SOUPLEX reinforced & cogged 17 x 11 mm	H16 reinforced & cogged 17 x 11 mm
Ft (daN)	40	50
ε (%)	1	1.5
Cf	0.35	0.25
Mmax (Kgs) = Ft / Cf	114	200
Mtotal (Kgs) = 2 x Mmax	228	400
Cs = Mtotal / M	2.3	4



SOLUTIONS

Both selected belts could easily convey this load of 100 kgs. Nevertheless, the H16 17 x 11 mm V belt requires much bigger pulleys than the 90 mm of the described conveyor. On the other hand, the reinforced and cogged 17 x 11 mm SOUPLEX can bend around pulleys down to 85 mm diameter. The most appropriate belt for this application is our **reinforced and cogged 17x11mm SOUPLEX, mounted with 1% pretension.**

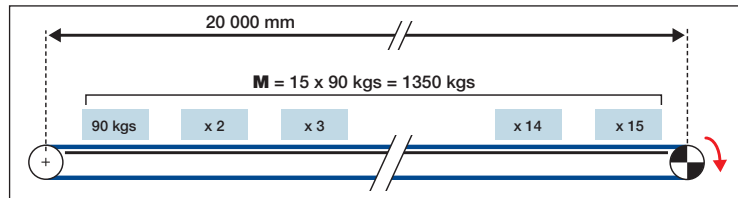


2/ PROTOTYPE

CHOOSING THE RIGHT BELT ACCORDING TO CONVEYOR DESIGNER'S SPECIFICATIONS.

DESIGNING A CONVEYOR IN ACCORDANCE WITH THE CHARACTERISTICS OF A PARTICULAR BELT.

Conveyor for an industrial cheese-dairy conveying 15 round cheeses of 90 kgs each along 20m. Stop-and-go driving.



choosing the belt category (page 41)

Long conveyor
Heavy load
Full-loaded starts

CATEGORY 3

choosing the quality of the belt

High traction force
Low friction coefficient
Easy to clean

**reinforced belt
DEL/ROC or DEL/SAN
round belt**

calculating the traction force to drive this load

**Total load
on the conveyor (kgs)**

M = 1350 kgs

Friction coefficient of the belt **Cf**
Continuous traction force **F (daN) = M x CF**
Traction force for full-loaded start **F' (daN) = F x 2**

	reinforced & round DEL/ROC			reinforced & round DEL/SAN		
	on runner stain. steel	HDPE	on support pulleys	on runner stain. steel	HDPE	on support pulleys
Cf	0.5	0.15	0.1	0.55	0.2	0.1
F (daN) = M x CF	675	203	135	743	270	135
F' (daN) = F x 2	1350	405	270	1486	540	270

choosing the section and the number of belt(s)

Choosing, among the selected category, how many belts and of which section are necessary to reach the necessary traction force, taking into account safety factor of about 1.5.

	reinforced & round DEL/ROC ø 18 mm			reinforced & round DEL/SAN ø 18 mm		
	Traction force : Ft = 200 daN			Traction force : Ft = 125 daN		
traction force for full-loaded starts F' (daN)	1350	405	270	1486	540	270
Necessary number of belts Nbre = F' / Ft	7	3	2	12	5	3
Total traction force Ftotal (daN) = Nbre x Ft	1400	600	400	1500	625	375
Safety coefficient Cs = Ftotal / F'	1.04	1.5	1.5	1.01	1.16	1.4

SOLUTIONS

Several options are possible

**3 reinforced DEL/ROC round belts d.18mm on HDPE runner
2 reinforced DEL/ROC round belts d.18mm on support pulleys
3 reinforced DEL/SAN round belts d.18mm on support pulleys**

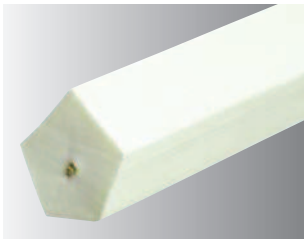
Consider the recommended pulley diameters

Reinforced DEL/ROC D.18 mm	Reinforced DEL/SAN D.18 mm
ø 360 mm	ø 250 mm



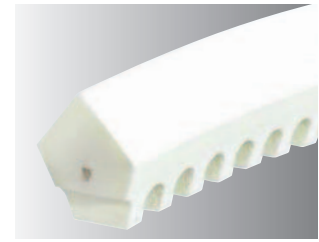
The traction forces of the belts selected through our example (200 daN for reinforced DEL/ROC diam. 18 mm and 125 daN for reinforced DEL/FLEX diam. 18 mm) are indicated in our catalogue at the following respective elongations: 2% and 1,5%. We strongly recommend to consider these tensions while mounting the belts on the machine, for the conveyor to work properly.

Hardness 85 ShA
Prefension see table
Temperature range -20°C/+60°C
Friction coefficient HDPE : 0.35 Steel : 0.6 Stainless steel : 0.7
Roll length 50 m



solid

SOUPLEX white Aramid reinforced



cogged

Reference	Traction force (daN)	Primitive pulley ø (mm) recommended	Primitive pulley ø (mm) mini
SXVWAR13F2	-	-	-
SXVWAR17F2	50	200	170
SXVWAR22F2	64	250	220

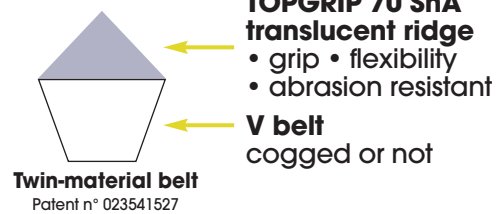
Dimension (mm)	Prefension
13x15 A	-
17x20 B	1.5%
22x25 C	1.5%

Reference	Traction force (daN)	Primitive pulley ø (mm) recommended	Primitive pulley ø (mm) mini
SXVWAC13F2	-	-	-
SXVWAC17F2	50	160	130
SXVWAC22F2	64	200	170

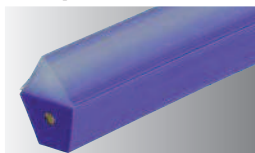
TOPGRIP ridge-top V belts

The TOPGRIP ridge can be welded on top of all our V belts, except DEL/ROC quality, resulting in a wide range of ridge-top V belts adapted to various conveying problems.

The technical characteristics (Traction force, elongation, friction coefficient...) of our TOPGRIP belts are similar to the characteristics of the base belts. Only the pulley diameter changes:

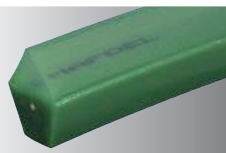


DEL/SAN reinforced

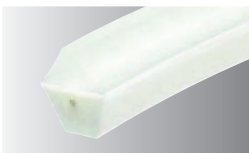


solid

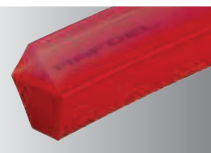
H15 reinforced



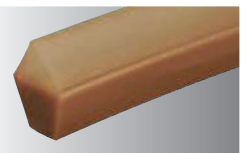
SOUPLEX reinforced



DEL/FLEX



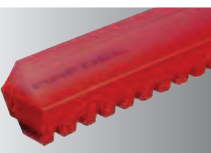
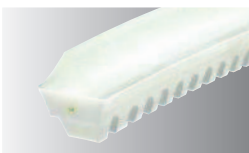
SOUPLEX



Reference :	DSVBAR--TO		H15GAR--TO		SXVWAR--TO		DFVR--TO		SXVM--TO	
Section (mm)	Primitive pulley ø (mm) recommended	Primitive pulley ø (mm) mini	Primitive pulley ø (mm) recommended	Primitive pulley ø (mm) mini	Primitive pulley ø (mm) recommended	Primitive pulley ø (mm) mini	Primitive pulley ø (mm) recommended	Primitive pulley ø (mm) mini	Primitive pulley ø (mm) recommended	Primitive pulley ø (mm) mini
13x15 A	180	160	170	150	150	130	150	130	130	110
17x20 B	210	190	200	180	180	160	180	160	160	140
22x25 C	290	270	280	260	260	230	260	230	240	220



cogged



Reference :	DSVBAC--TO		H16GAC--TO		SXVWAC--TO		DFVRCR--TO		SXVMCR--TO	
Section (mm)	Primitive pulley ø (mm) recommended	Primitive pulley ø (mm) mini	Primitive pulley ø (mm) recommended	Primitive pulley ø (mm) mini	Primitive pulley ø (mm) recommended	Primitive pulley ø (mm) mini	Primitive pulley ø (mm) recommended	Primitive pulley ø (mm) mini	Primitive pulley ø (mm) recommended	Primitive pulley ø (mm) mini
13x15 A	150	130	130	110	120	100	120	100	100	90
17x20 B	180	160	160	140	140	120	140	120	120	100
22x25 C	240	210	220	200	190	170	190	170	180	160



Roll length **30 m**

brush belts



**CONTINUOUS
DYNAMIC
BRUSHING**



SOUPLEX or DEL/FLEX brush belts



Quality	Reference	Dimension (mm)	Mini pulley ϕ (mm)	Height of bristles	Number of rows	Pitch of bristles (mm)	Cross section of bristle (mm)	Nylon bristles
DEL/FLEX	DFVR13BR	13 x 8 A	120	27	1	8	40/100	
SOUPLEX	SXVM17BR	17 x 11 B	180	60	2	8	40/100	
SOUPLEX	SXVM22BR	22 x 14 C	240	60	3	8	40/100	

Special brush belts :

- Height
- cross section
- pitch
- special brushing

On demand.



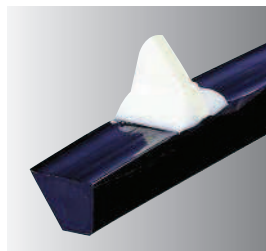
V belts with flights



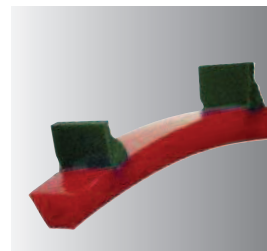
High flights.



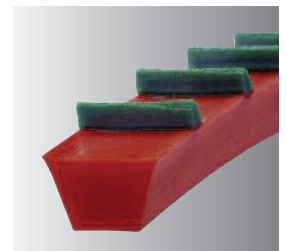
Flexible flights.



Flat welded triangles, for a minimum contact with the transported products.



Tough welded flights (several heights possible).



SF7 flights.



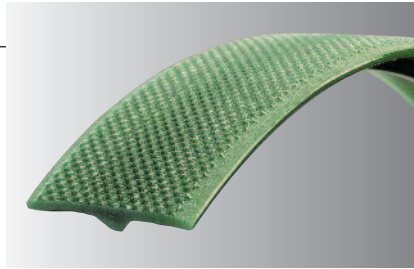
special profiles

ATC 63

For film-packaging machine

Cross section 25 x 2 mm
with 4 x 2.5 mm guide

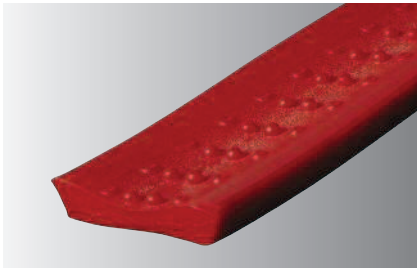
Rough or smooth surface, also
available in thinner widths.



Hardness : 92 ShA

Recommended pulley diameter : 60 mm

Minimum pulley diameter : 40 mm

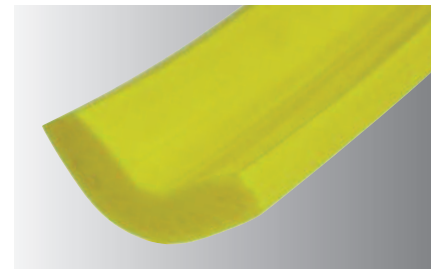


E 238 corn belt

Hardness : 90 ShA

Dimensions : 32 x 28 x 8 mm

U-shaped to convey corn.



U Profile

Hardness : 80 ShA

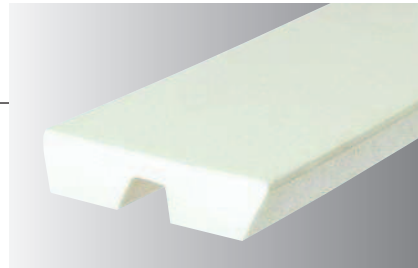
Dimensions : 40 x 10 mm

Cable-saw pulley covering.

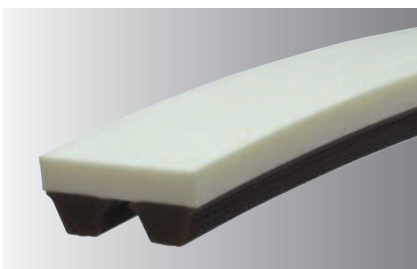
Double V belt 30 x 8 mm

in quality SOUPLEX or DEL/FLEX
Hardness : 85 ou 90 ShA

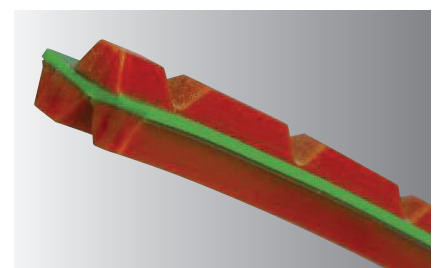
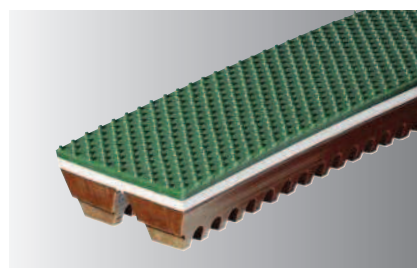
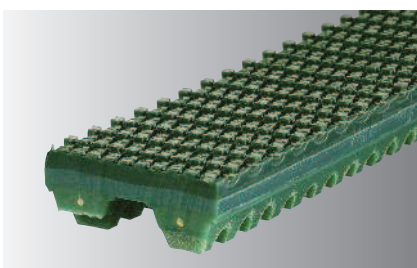
Also available with flights
and coatings.



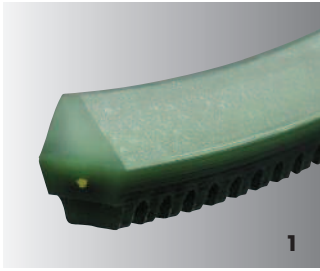
multiples V belts



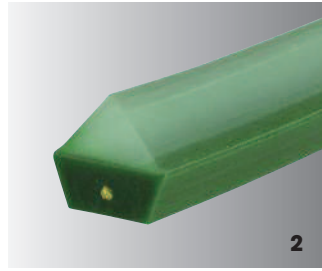
Cross section, width, thickness, lengths and hardness on demand.



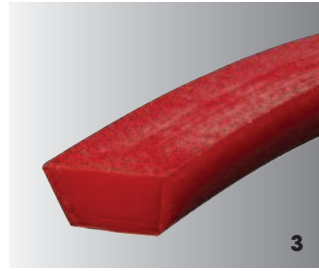
Other coatings.



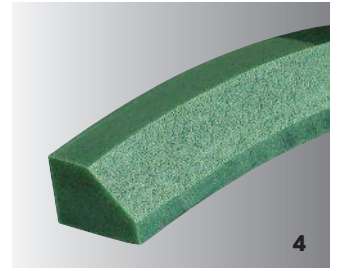
1
Asymmetric ridge-top V belt.



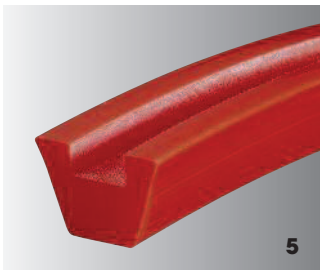
2
Machined ridge-top V belt.



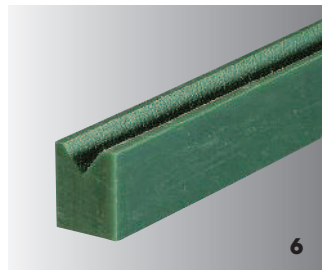
3
Machined V belt, to make it thinner and more flexible.



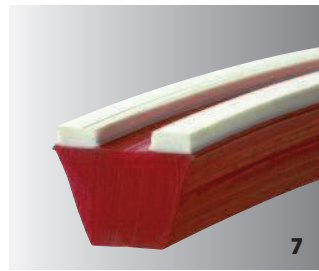
4
Special machined profiles on demand.



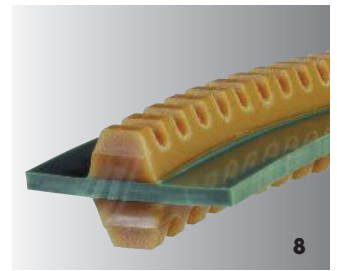
5
V belt with rectangular groove.



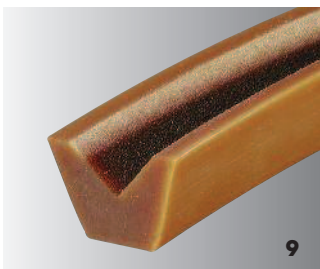
6
Rectangular belt with V groove.



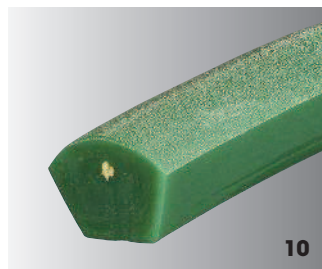
7
V belt with machined surface.



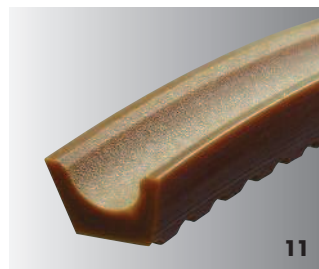
8
DEL/FLEX flat belt with two opposite V guides for alternate operation.



9
V belt with machined V groove (several depth possible).



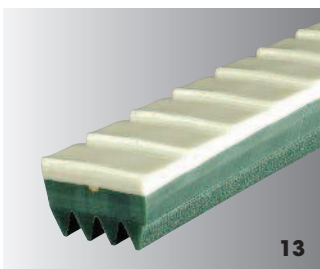
10
Dome-shaped V belt.



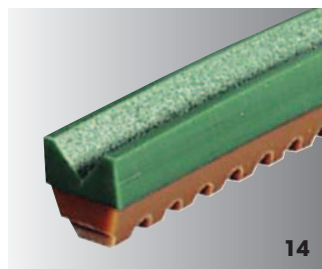
11
V belt with round groove (several depth possible).



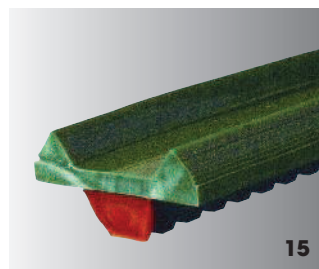
12
V belt machined on demand.



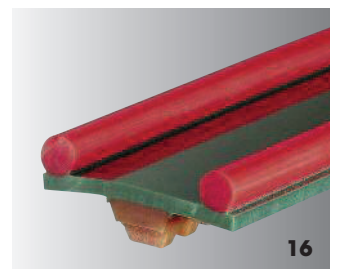
13
Special belt with saw-tooth surface and machined POLY-V bottom grooves.



14
V belt with V shape machine surface.

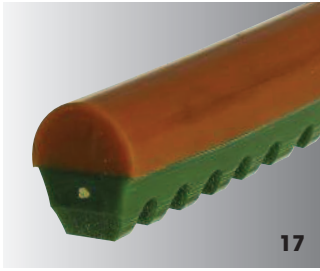


15
V belt with welded surface and V hold-in edges.

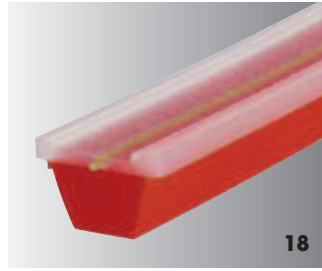


16
V belt with welded surface and round hold-in edges.

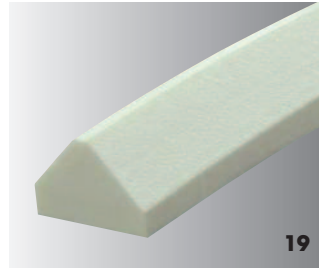




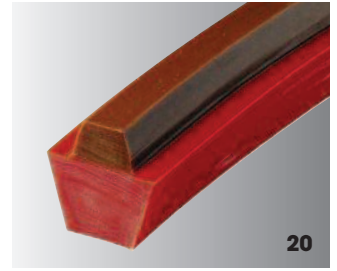
17
V belt with welded half round belt.



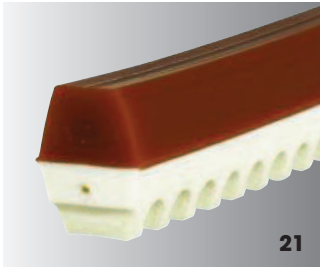
18
V belt with machined surface and aramid reinforcement.



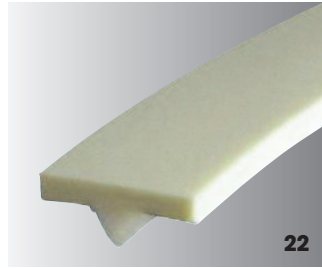
19
Asymmetric triangle belt.



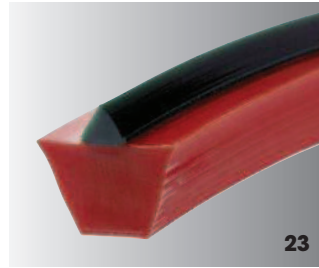
20
Hexagonal asymmetric SOUPLEX belt.



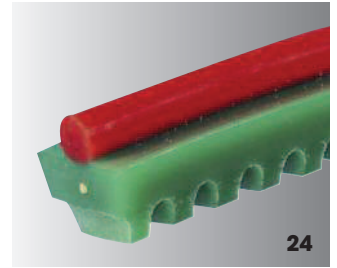
21
Cogged hexagonal belt.



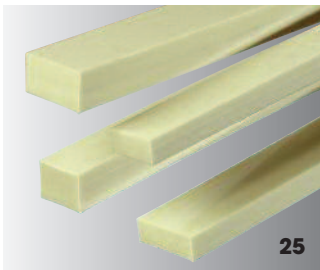
22
Flat belt with SR5 guide welded apex down.



23
V belt with welded SF7 ridge.



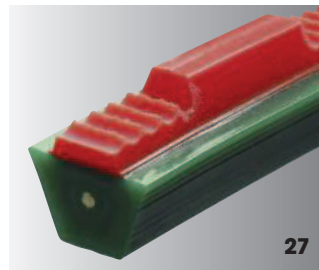
24
Round belt welded on top of a V belt.



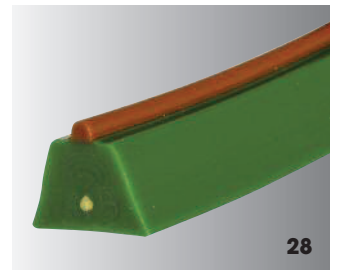
25
Rectified belt for mobile moulding.



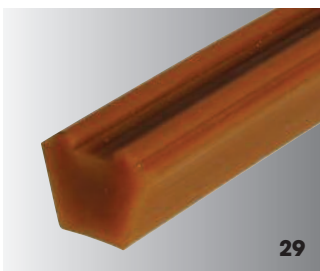
26
V belt with surface and machined hold-in edges.



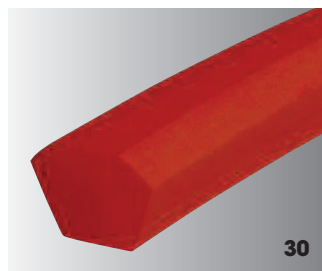
27
Hexagonal asymmetric belt with special cogging.



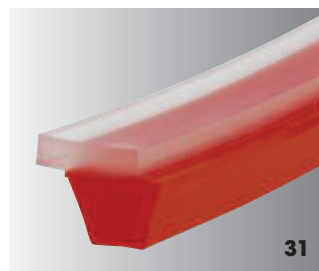
28
Round belt welded on the small base of a V belt.



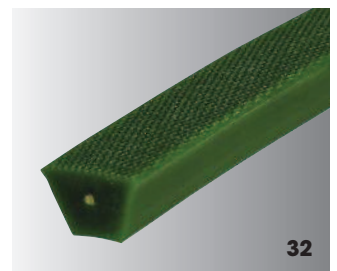
29
V belt with round edges.



30
Chamfered V belt.



31
V belt with out-of-center surface.



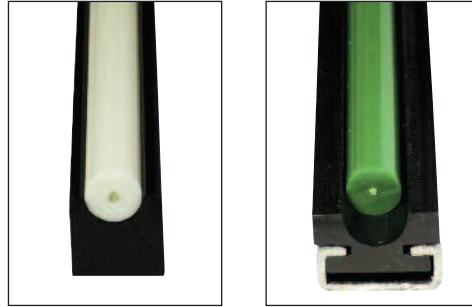
32
Embossed V belt.

VIT/GLISS runner for round belts

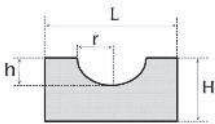
Manufactured out of High Density Polyethylene (H.D.PE), our VIT/GLISS runners will both perfectly guide your belts and improve the load capacity of each belt by reducing its friction on its runner.

Advantages :

- Perfect guiding of the belts.
- Low friction coefficient.
- Excellent resistance against abrasion.
- Shock-proof.
- Good resistance against corrosion and many chemical agents.
- Maximum continuous working temperature : +70°C.
- Extreme temperature limits : -40°C to +100°C.

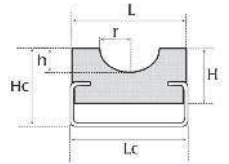


With steel rail.
(stainless steel on demand and according to quantities).
Delivered in bars of 3 m.



Ref.	Belt diam.	L	H	r	h
R 6	∅ 6	20	10	4	4
R 8	∅ 8	20	12	5	5
R 10	∅ 9.5 - 10	25	15	6	6
R 12	∅ 12 - 12.5	30	20	7	8
R 15	∅ 15	35	25	8.5	10
R 18	∅ 18	40	25	10	12

Ref.	Belt diam.	L	H	r	h	Hc	Lc
RC 6	∅ 6	20	15	4	4	18	20
RC 8	∅ 8	20	15	5	5	18	20
RC 10	∅ 9.5 - 10	20	15	6	6	20	20
RC 12	∅ 12 - 12.5	28	15	7	8	20	28
RC 15	∅ 15	33	20	8.5	10	25	38
RC 18	∅ 18	38	20	10	12	25	38



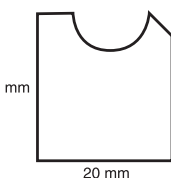
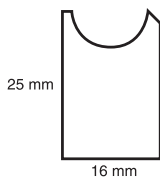
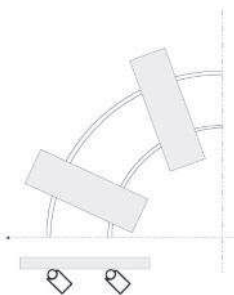
- **White HDPE runners for food industry.**
- **C-shape stainless steel rail.**
- **Special runners following our customers schemes.**

Consult us.

Attention :

Take care of the HDPE longitudinal dilatation : 2 mm per metre for a 10°C increase in temperature.

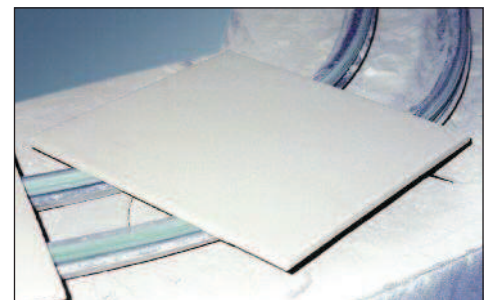
runners for curved conveyors



These runners can be bent without any special tool to be fixed on curved conveyors, thanks to their flexibility.

2 standard sizes for ∅ 12 mm round belts :
25 x 16 mm and 20 x 20 mm.

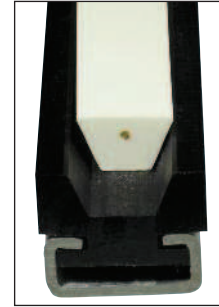
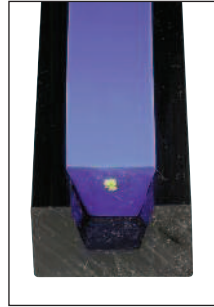
Recommended belts :
POLY/FLEX or any other frosted belt.



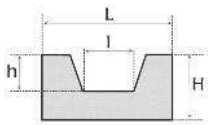
Manufactured out of High Density Polyethylene (H.D.P.E), our VIT/GLISS runners will both perfectly guide your belts and improve the load capacity of each belt by reducing its friction on its runner.

Advantages :

- Perfect guiding of the belts.
- Low friction coefficient.
- Excellent resistance against abrasion.
- Shock-proof.
- Good resistance against corrosion and many chemical agents.
- Maximum continuous working temperature : +70°C.
- Extreme temperature limits : -40°C to +100°C.

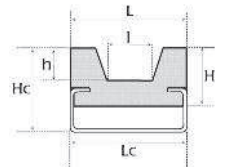


With steel rail.
(Stainless steel on demand and according to quantities).
Delivered in bars of 3 m.



Ref.	Belt dimensions	L	H	I	h
T 10	10 x 6	20	10	7	4
T 13	13 x 8	20	12	9	5
T 17	17 x 11	30	15	12	8
T 22	22 x 14	35	20	15	10
T 32	32 x 19	50	30	21	13

Ref.	Belt dimensions	L	H	I	h	Hc	Lc
TC 10	10 x 6	20	15	7	4	18	20
TC 13	13 x 8	20	18	9	5	22	20
TC 17	17 x 11	30	18	12	8	24	28
TC 22	22 x 14	35	25	15	10	30	38
TC 32	32 x 19	50	30	21	13	38	38



- **White HDPE runners for food industry.**
- **C-shape stainless steel rail.**
- **Special runners following our customers schemes.**

Consult us.

Attention :

Take care of the HDPE longitudinal dilatation, which is of 2 mm per metre for a 10°C increase in temperature.

special runners for V belts



Out-of-center grooves and chamfer.



Thin edges.



Double grooves - multi grooves.

SPECIAL PROFILES ON DEMAND.

