

DYSTRYBUTOR



TECHNICAL

GRZEGORZ TĘGOS

TECHNIKA NAPĘDU I TRANSMISJI MOCY

62-600 Koło, ul. Toruńska 212
tel. 0-63/ 27 25 478 / fax. 0-63/ 26 16 258

www.technical.pl
biuro@technical.pl

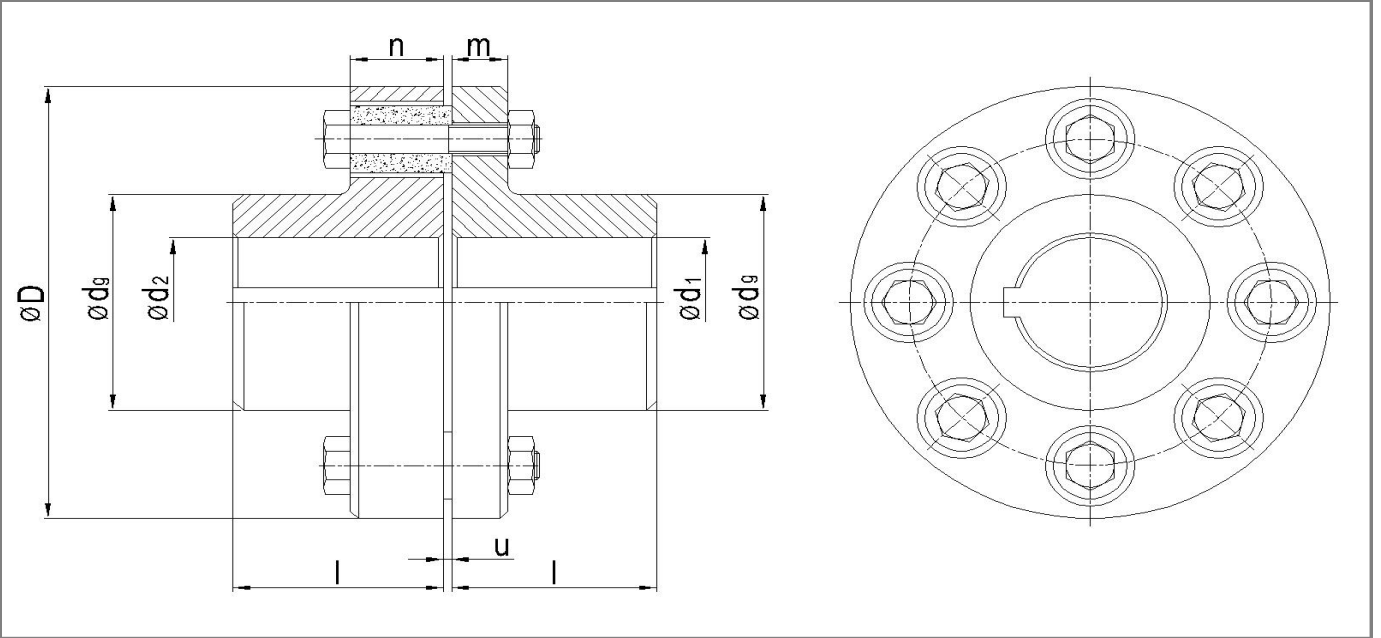
Sklep internetowy
www.sklep.technical.pl

Sprzęgła elastyczne palcowe



Dişsan
Redüktör

Model (Type) : DYHK



| Kavrama Boyu Coupling Size | Taşıyacağı Döndürme Momenti Nom. Torque N.m | Taşıyacağı Güç Nominal Power kw | | | Max. Devir Sayısı Max. Speed d/d r.p.m. | Ölçüler (Dimensions) mm | | | | | | Ağırlık Weight kg | | |
|-------------------------------|--|------------------------------------|-----------------------|-----------------------|--|-----------------------------|------------------------|-----|-----|-----|----|----------------------|-------|-----|
| | | 3000 d/d r.p.m. | 1500 d/d r.p.m. | 1000 d/d r.p.m. | | Delik Çapı Hole Diameter | | D | dg | l | m | | n | u |
| | | | | | | d ₁ max. | d ₂ max. | | | | | | | |
| DYHK - 140 | 650 | 30 | 15 | 11 | 7900 | 38 | 38 | 140 | 62 | 60 | 20 | 35 | 2 - 3 | 8 |
| DYHK - 160 | 1000 | 55 | 30 | 22 | 6900 | 48 | 48 | 160 | 80 | 60 | 20 | 35 | 2 - 3 | 12 |
| DYHK - 180 | 1200 | 90 | 45 | 30 | 6200 | 65 | 65 | 180 | 100 | 80 | 22 | 35 | 2 - 3 | 17 |
| DYHK - 200 | 1700 | 132 | 60 | 45 | 5500 | 65 | 65 | 200 | 100 | 80 | 25 | 50 | 2 - 3 | 26 |
| DYHK - 230 | 2800 | 200 | 90 | 60 | 4800 | 80 | 80 | 230 | 125 | 90 | 25 | 50 | 2 - 3 | 30 |
| DYHK - 250 | 3500 | 315 | 150 | 110 | 4400 | 80 | 80 | 250 | 125 | 100 | 35 | 60 | 3 - 5 | 45 |
| DYHK - 280 | 5400 | 500 | 250 | 180 | 4000 | 100 | 100 | 280 | 150 | 110 | 35 | 60 | 3 - 5 | 56 |
| DYHK - 320 | 7000 | 750 | 375 | 250 | 3500 | 110 | 110 | 320 | 170 | 125 | 40 | 70 | 3 - 5 | 84 |
| DYHK - 360 | 10000 | 1100 | 550 | 360 | 3100 | 130 | 130 | 360 | 200 | 140 | 40 | 70 | 3 - 5 | 105 |
| DYHK - 400 | 16000 | 1500 | 750 | 500 | 2800 | 140 | 140 | 400 | 210 | 160 | 45 | 80 | 3 - 5 | 135 |
| DYHK - 450 | 24000 | - | 1100 | 750 | 2500 | 160 | 160 | 450 | 240 | 180 | 45 | 80 | 3 - 5 | 235 |
| DYHK - 500 | 32000 | - | 1600 | 1100 | 2200 | 200 | 200 | 500 | 290 | 200 | 50 | 80 | 3 - 5 | 284 |
| DYHK - 550 | 50000 | - | 1800 | 1200 | 2000 | 240 | 240 | 550 | 300 | 200 | 60 | 105 | 3 - 5 | 402 |
| DYHK - 600 | 65000 | - | 2000 | 1400 | 1800 | 270 | 270 | 600 | 350 | 220 | 60 | 105 | 3 - 5 | 477 |

1 - Kavrama gövdeleri C45 imalat çeliğinden imal edilmiş ve bütün yüzeyler işlenmiştir. Perno malzemeleri yine C45 imalat çeliğidir.

2 - Elastik takoz malzemesi Poliüretan Elastömeri (Vulkollan) dir. Sürtünmeye ve darbelere dayanıklıdır.

3 - Kavrama gövdelerinin göbekleri delinmemiş olarak teslim edilir.

4 - Çizelgede kavramanın taşıyacağı nominal döndürme momenti verilmiştir. Kavrama seçimi yaparken, iş makinesinin cinsine uygun emniyet katsayısı almak gereklidir. Redüktör seçiminde kullanılan emniyet katsayısı çizelgesi, kavrama seçiminde de kullanılabilir.

1 - Housing of the coupling is C45 steel, surfaces machined. Pin material is also C45 steel.

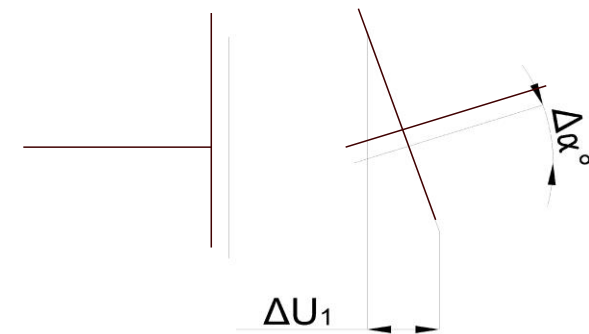
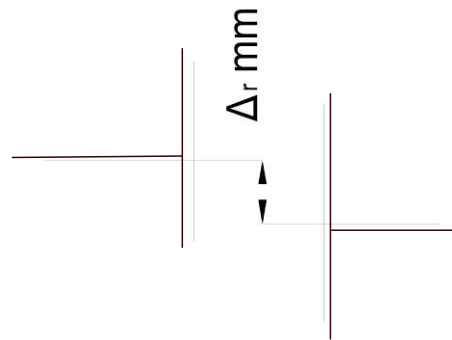
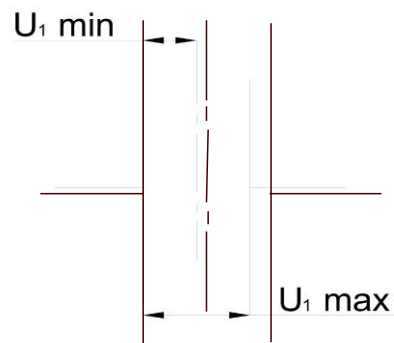
2 - Cylindric buffer made of polyurethane (Vulkollan) resistant to friction and shock loading.

3 - Coupling hub is not machined ex factory.

4 - Nominal torque of coupling is given in the table. During selection of the coupling, the security factor is chosen according to driven engine. The security factor table for gearbox is also valid for coupling.

MOUNTING TOLERANCES OF DYHK MODEL ELASTIC COUPLINGS

| Coupling Size | Gap Between Two Coupling Parts | | Radial and Angular Misalignment Tolerances According to Speed | | | | | | | | | |
|---------------|--------------------------------|-----------------------|---|--------------------------|---------------------------|--------------------------|---------------------------|--------------------------|---------------------------|--------------------------|---------------------------|--------------------------|
| | | | Coupling Speed 500 rpm | | Coupling Speed 750 rpm | | Coupling Speed 1000 rpm | | Coupling Speed 1500 rpm | | Coupling Speed 3000 rpm | |
| | | | Between Two Shaft Axis | | Between Two Shaft Axis | | Between Two Shaft Axis | | Between Two Shaft Axis | | Between Two Shaft Axis | |
| | U _{min} (mm) | U _{max} (mm) | Radial Misalignment Δr mm | Angular Misalignment Δα° | Radial Misalignment Δr mm | Angular Misalignment Δα° | Radial Misalignment Δr mm | Angular Misalignment Δα° | Radial Misalignment Δr mm | Angular Misalignment Δα° | Radial Misalignment Δr mm | Angular Misalignment Δα° |
| DYHK – 140 | 2 | 4 | 0,45 | 0,18 | 0,37 | 0,15 | 0,30 | 0,12 | 0,25 | 0,10 | 0,20 | 0,07 |
| DYHK – 160 | 2 | 4 | 0,45 | 0,17 | 0,40 | 0,14 | 0,35 | 0,12 | 0,25 | 0,10 | 0,20 | 0,07 |
| DYHK – 180 | 2 | 4 | 0,50 | 0,16 | 0,42 | 0,13 | 0,35 | 0,11 | 0,30 | 0,09 | 0,20 | 0,06 |
| DYHK – 200 | 2 | 4 | 0,50 | 0,15 | 0,45 | 0,13 | 0,40 | 0,11 | 0,30 | 0,09 | 0,20 | 0,06 |
| DYHK – 230 | 2 | 4 | 0,60 | 0,15 | 0,50 | 0,12 | 0,40 | 0,10 | 0,35 | 0,09 | 0,25 | 0,06 |
| DYHK – 250 | 2 | 4 | 0,65 | 0,14 | 0,55 | 0,12 | 0,45 | 0,10 | 0,35 | 0,08 | 0,25 | 0,06 |
| DYHK – 280 | 3 | 6 | 0,70 | 0,14 | 0,60 | 0,12 | 0,50 | 0,10 | 0,40 | 0,08 | 0,30 | 0,06 |
| DYHK – 320 | 3 | 6 | 0,75 | 0,13 | 0,65 | 0,11 | 0,55 | 0,09 | 0,45 | 0,08 | 0,30 | 0,06 |
| DYHK – 360 | 3 | 6 | 0,80 | 0,13 | 0,70 | 0,11 | 0,60 | 0,09 | 0,50 | 0,08 | 0,35 | 0,05 |
| DYHK – 400 | 3 | 6 | 0,90 | 0,13 | 0,75 | 0,11 | 0,65 | 0,09 | 0,50 | 0,07 | - | - |
| DYHK – 450 | 3 | 6 | 1,00 | 0,12 | 0,85 | 0,10 | 0,70 | 0,09 | 0,55 | 0,07 | - | - |
| DYHK – 500 | 3 | 6 | 1,10 | 0,12 | 0,90 | 0,10 | 0,75 | 0,09 | 0,60 | 0,07 | - | - |
| DYHK – 560 | 3 | 6 | 1,20 | 0,12 | 1,00 | 0,10 | 0,85 | 0,08 | 0,70 | 0,07 | - | - |
| DYHK – 630 | 3 | 6 | 1,20 | 0,12 | 1,00 | 0,10 | 0,85 | 0,08 | 0,70 | 0,07 | - | - |


 ΔU_1