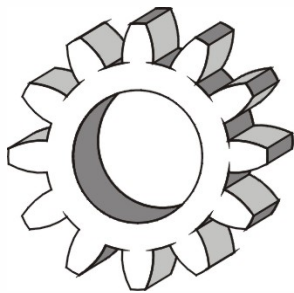


DYSTRYBUTOR



TECHNICAL

GRZEGORZ TĘGOS

TECHNIKA NAPĘDU I TRANSMISJI MOCY

62-600 Koło, ul. Toruńska 212
tel. 0-63/ 27 25 478 / fax. 0-63/ 26 16 258

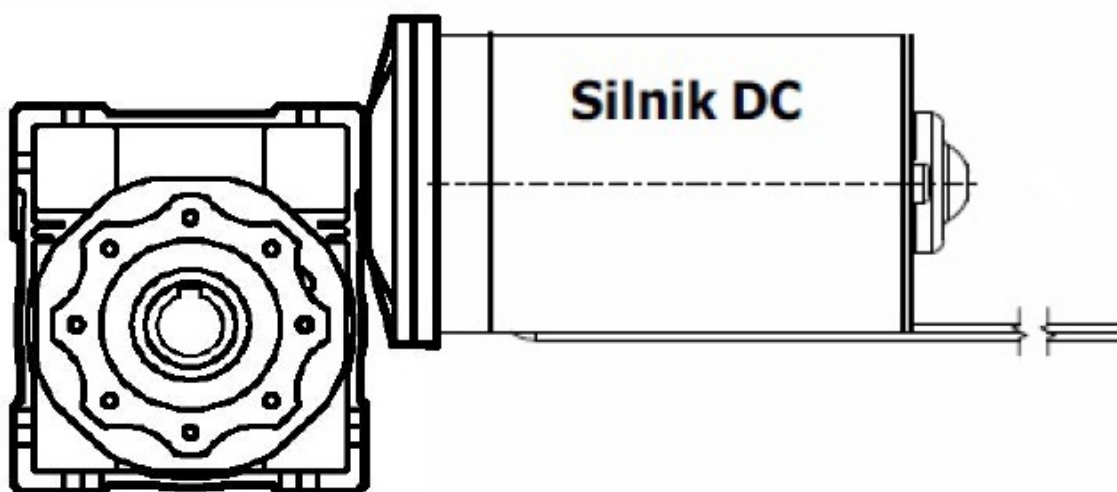
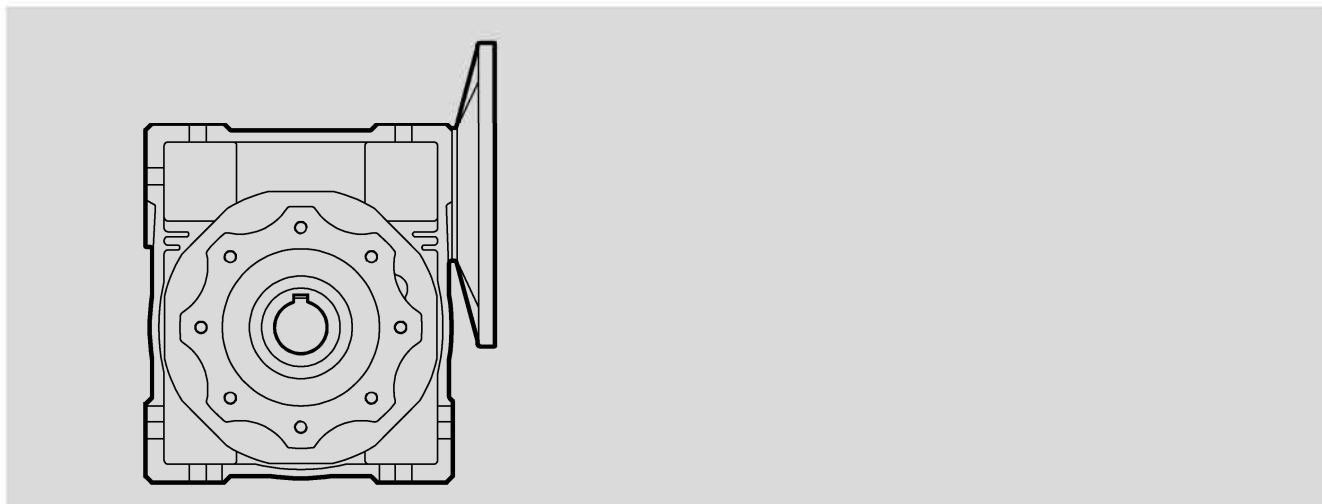
www.technical.pl
biuro@technical.pl

Sklep internetowy
www.sklep.technical.pl

**Silnik DC 24V
z przekładnią ślimakową**

Schneckengetriebe
Worm gear units

Reduktory ślimakowe z kołnierzem IEC 105-14 lub 160-14
dla silnika prądu stałego DC 24V, 1700 obr/min bez obciążenia, 220W



REDUCTORES Serie "LACX"

Para acoplar directamente a motores con brida según norma IEC-DIN 42677.

GETRIEBE Serie "LACX"

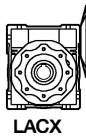
Mit Hohlantriebswelle zum Anbau eines IEC-DIN 42677.

GEAR UNITS Serie "LACX"

To couple directly to motors with flanges according to DIN standards 42677.

REDUKTORY ŚLIMAKOWE Serii "LACX"

Do sprzężenia bezpośredniego z silnikami kołnierzowymi wg normy DIN 42677.



Coupling of motor

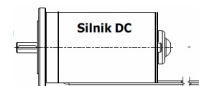
Sprzęgło do silnika

Ø105-Ø14

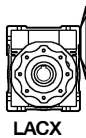
LACX

Ø160-Ø14

Silnik DC 24V do przekładni ślimakowej,
P - 220W, 1700 obr/min bez obciążenia,
Ma max rozruchowy - 1,5Nm



| M2 [Nm] | iR | P [kW] | sprawność % | FRs [N] | FRe [N] | Tipo Typ Type | Código Referenz Ref. |
|------------|-----|-----------|----------------|------------|------------|------------------------|----------------------------|
| 180 | 100 | 0,47 | 54 | 6603 | 980 | LAC 75X/100/160-14 D28 | RAX075B000 |
| 180 | 100 | 0,47 | 54 | 6603 | 980 | LAC 75X/100/160-14 D35 | RAX075B001 |
| 190 | 80 | 0,57 | 59 | 6130 | 980 | LAC 75X/80/160-14 D28 | RAX075B010 |
| 190 | 80 | 0,57 | 59 | 6130 | 980 | LAC 75X/80/160-14 D35 | RAX075B011 |
| 200 | 60 | 0,74 | 64 | 5569 | 980 | LAC 75X/60/160-14 D28 | RAX075B020 |
| 200 | 60 | 0,74 | 64 | 5569 | 980 | LAC 75X/60/160-14 D35 | RAX075B021 |
| 210 | 50 | 0,88 | 68 | 5241 | 980 | LAC 75X/50/160-14 D28 | RAX075B030 |
| 210 | 50 | 0,88 | 68 | 5241 | 980 | LAC 75X/50/160-14 D35 | RAX075B031 |
| | | | | | | | |
| 118 | 100 | 0,33 | 53 | 5595 | 700 | LAC 63X/100/160-14 D25 | RAX063B000 |
| 118 | 100 | 0,33 | 53 | 5595 | 700 | LAC 63X/100/160-14 D28 | RAX063B001 |
| 118 | 100 | 0,33 | 53 | 5595 | 700 | LAC 63X/100/160-14 D30 | RAX063B002 |
| 118 | 100 | 0,33 | 53 | 5595 | 700 | LAC 63X/100/105-14 D25 | RAX063B010 |
| 118 | 100 | 0,33 | 53 | 5595 | 700 | LAC 63X/100/105-14 D28 | RAX063B011 |
| 118 | 100 | 0,33 | 53 | 5595 | 700 | LAC 63X/100/105-14 D30 | RAX063B012 |
| 122 | 80 | 0,39 | 59 | 5193 | 700 | LAC 63X/80/160-14 D25 | RAX063B020 |
| 122 | 80 | 0,39 | 59 | 5193 | 700 | LAC 63X/80/160-14 D28 | RAX063B021 |
| 122 | 80 | 0,39 | 59 | 5193 | 700 | LAC 63X/80/160-14 D30 | RAX063B022 |
| 122 | 80 | 0,39 | 59 | 5193 | 700 | LAC 63X/80/105-14 D25 | RAX063B030 |
| 122 | 80 | 0,39 | 59 | 5193 | 700 | LAC 63X/80/105-14 D28 | RAX063B031 |
| 122 | 80 | 0,39 | 59 | 5193 | 700 | LAC 63X/80/105-14 D30 | RAX063B032 |
| 130 | 60 | 0,5 | 62 | 4719 | 700 | LAC 63X/60/160-14 D25 | RAX063B040 |
| 130 | 60 | 0,5 | 62 | 4719 | 700 | LAC 63X/60/160-14 D28 | RAX063B041 |
| 130 | 60 | 0,5 | 62 | 4719 | 700 | LAC 63X/60/160-14 D30 | RAX063B042 |
| 130 | 60 | 0,5 | 62 | 4719 | 700 | LAC 63X/60/105-14 D25 | RAX063B050 |
| 130 | 60 | 0,5 | 62 | 4719 | 700 | LAC 63X/60/105-14 D28 | RAX063B051 |
| 130 | 60 | 0,5 | 62 | 4719 | 700 | LAC 63X/60/105-14 D30 | RAX063B052 |
| 135 | 50 | 0,59 | 68 | 4440 | 700 | LAC 63X/50/160-14 D25 | RAX063B060 |
| 135 | 50 | 0,59 | 68 | 4440 | 700 | LAC 63X/50/160-14 D28 | RAX063B061 |
| 135 | 50 | 0,59 | 68 | 4440 | 700 | LAC 63X/50/160-14 D30 | RAX063B062 |
| 135 | 50 | 0,59 | 68 | 4440 | 700 | LAC 63X/50/105-14 D25 | RAX063B070 |
| 135 | 50 | 0,59 | 68 | 4440 | 700 | LAC 63X/50/105-14 D28 | RAX063B071 |
| 135 | 50 | 0,59 | 68 | 4440 | 700 | LAC 63X/50/105-14 D30 | RAX063B072 |
| 145 | 40 | 0,75 | 72 | 4122 | 700 | LAC 63X/40/160-14 D25 | RAX063B080 |
| 145 | 40 | 0,75 | 72 | 4122 | 700 | LAC 63X/40/160-14 D28 | RAX063B081 |
| 145 | 40 | 0,75 | 72 | 4122 | 700 | LAC 63X/40/160-14 D30 | RAX063B082 |
| 145 | 40 | 0,75 | 72 | 4122 | 700 | LAC 63X/40/105-14 D25 | RAX063B090 |
| 145 | 40 | 0,75 | 72 | 4122 | 700 | LAC 63X/40/105-14 D28 | RAX063B091 |
| 145 | 40 | 0,75 | 72 | 4122 | 700 | LAC 63X/40/105-14 D30 | RAX063B092 |
| | | | | | | | |
| 65 | 80 | 0,22 | 51 | 3973 | 490 | LAC 50X/80/160-14 D25 | RAX050B050 |
| 65 | 80 | 0,22 | 51 | 3973 | 490 | LAC 50X/80/160-14 D24 | RAX050B051 |
| 65 | 80 | 0,22 | 51 | 3973 | 490 | LAC 50X/80/105-14 D25 | RAX050B060 |
| 65 | 80 | 0,22 | 51 | 3973 | 490 | LAC 50X/80/105-14 D24 | RAX050B061 |
| 72 | 60 | 0,29 | 57 | 3610 | 490 | LAC 50X/60/160-14 D25 | RAX050B070 |



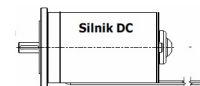
Coupling of motor

Sprzęgło do silnika

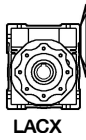
Ø105-Ø14

Ø160-Ø14

Silnik DC 24V do przekładni ślimakowej,
P - 220W, 1700 obr/min bez obciążenia,
Ma max rozruchowy - 1,5Nm

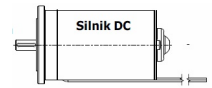


| M2 [Nm] | iR | P [kW] | sprawność % | FRs [N] | FRe [N] | Tipo Typ Type | Código Referenz Ref. |
|------------|-----|-----------|----------------|------------|------------|------------------------|----------------------------|
| 72 | 60 | 0,29 | 57 | 3610 | 490 | LAC 50X/60/160-14 D24 | RAX050B071 |
| 72 | 60 | 0,29 | 57 | 3610 | 490 | LAC 50X/60/105-14 D25 | RAX050B080 |
| 72 | 60 | 0,29 | 57 | 3610 | 490 | LAC 50X/60/105-14 D24 | RAX050B081 |
| 77 | 50 | 0,35 | 61 | 3397 | 490 | LAC 50X/50/160-14 D25 | RAX050B090 |
| 77 | 50 | 0,35 | 61 | 3397 | 490 | LAC 50X/50/160-14 D24 | RAX050B091 |
| 77 | 50 | 0,35 | 61 | 3397 | 490 | LAC 50X/50/105-14 D25 | RAX050B0A0 |
| 77 | 50 | 0,35 | 61 | 3397 | 490 | LAC 50X/50/105-14 D24 | RAX050B0A1 |
| 82 | 40 | 0,44 | 65 | 3153 | 490 | LAC 50X/40/160-14 D25 | RAX050B0B0 |
| 82 | 40 | 0,44 | 65 | 3153 | 490 | LAC 50X/40/160-14 D24 | RAX050B0B1 |
| 82 | 40 | 0,44 | 65 | 3153 | 490 | LAC 50X/40/105-14 D25 | RAX050B0C0 |
| 82 | 40 | 0,44 | 65 | 3153 | 490 | LAC 50X/40/105-14 D24 | RAX050B0C1 |
| 88 | 30 | 0,59 | 70 | 2865 | 490 | LAC 50X/30/160-14 D25 | RAX050B0D0 |
| 88 | 30 | 0,59 | 70 | 2865 | 490 | LAC 50X/30/160-14 D24 | RAX050B0D1 |
| 88 | 30 | 0,59 | 70 | 2865 | 490 | LAC 50X/30/105-14 D25 | RAX050B0E0 |
| 88 | 30 | 0,59 | 70 | 2865 | 490 | LAC 50X/30/105-14 D24 | RAX050B0E1 |
| 71 | 25 | 0,54 | 74 | 2696 | 490 | LAC 50X/25/160-14 D25 | RAX050B0F0 |
| 71 | 25 | 0,54 | 74 | 2696 | 490 | LAC 50X/25/160-14 D24 | RAX050B0F1 |
| 71 | 25 | 0,54 | 74 | 2696 | 490 | LAC 50X/25/105-14 D25 | RAX050B0G0 |
| 71 | 25 | 0,54 | 74 | 2696 | 490 | LAC 50X/25/105-14 D24 | RAX050B0G1 |
| 78 | 20 | 0,71 | 77 | 2503 | 490 | LAC 50X/20/160-14 D25 | RAX050B0H0 |
| 78 | 20 | 0,71 | 77 | 2503 | 490 | LAC 50X/20/160-14 D24 | RAX050B0H1 |
| 78 | 20 | 0,71 | 77 | 2503 | 490 | LAC 50X/20/105-14 D25 | RAX050B0J0 |
| 78 | 20 | 0,71 | 77 | 2503 | 490 | LAC 50X/20/105-14 D24 | RAX050B0J1 |
| 81 | 15 | 0,95 | 80 | 2274 | 490 | LAC 50X/15/160-14 D25 | RAX050B0K0 |
| 81 | 15 | 0,95 | 80 | 2274 | 490 | LAC 50X/15/160-14 D24 | RAX050B0K1 |
| 81 | 15 | 0,95 | 80 | 2274 | 490 | LAC 50X/15/105-14 D25 | RAX050B0L0 |
| 81 | 15 | 0,95 | 80 | 2274 | 490 | LAC 50X/15/105-14 D24 | RAX050B0L1 |
| 79 | 10 | 1,33 | 84 | 1987 | 490 | LAC 50X/10/160-14 D25 | RAX050B0M0 |
| 79 | 10 | 1,33 | 84 | 1987 | 490 | LAC 50X/10/160-14 D24 | RAX050B0M1 |
| 79 | 10 | 1,33 | 84 | 1987 | 490 | LAC 50X/10/105-14 D25 | RAX050B0N0 |
| 79 | 10 | 1,33 | 84 | 1987 | 490 | LAC 50X/10/105-14 D24 | RAX050B0N1 |
| 77 | 7,5 | 1,71 | 86 | 1805 | 396 | LAC 50X/7,5/160-14 D25 | RAX050B0P0 |
| 77 | 7,5 | 1,71 | 86 | 1805 | 396 | LAC 50X/7,5/160-14 D24 | RAX050B0P1 |
| 77 | 7,5 | 1,71 | 86 | 1805 | 396 | LAC 50X/7,5/105-14 D25 | RAX050B0Q0 |
| 77 | 7,5 | 1,71 | 86 | 1805 | 396 | LAC 50X/7,5/105-14 D24 | RAX050B0Q1 |
| 68 | 5 | 2,24 | 89 | 1577 | 350 | LAC 50X/5/160-14 D25 | RAX050B0R0 |
| 68 | 5 | 2,24 | 89 | 1577 | 350 | LAC 50X/5/160-14 D24 | RAX050B0R1 |
| 68 | 5 | 2,24 | 89 | 1577 | 350 | LAC 50X/5/105-14 D25 | RAX050B0S0 |
| 68 | 5 | 2,24 | 89 | 1577 | 350 | LAC 50X/5/105-14 D24 | RAX050B0S1 |
| 45 | 40 | 0,25 | 64 | 2298 | 350 | LAC 40X/40/160-14 D18 | RAX040B0U0 |
| 45 | 40 | 0,25 | 64 | 2298 | 350 | LAC 40X/40/160-14 D19 | RAX040B0U1 |
| 45 | 40 | 0,25 | 64 | 2298 | 350 | LAC 40X/40/105-14 D18 | RAX040B0V0 |
| 45 | 40 | 0,25 | 64 | 2298 | 350 | LAC 40X/40/105-14 D19 | RAX040B0V1 |
| 48 | 30 | 0,33 | 69 | 2087 | 350 | LAC 40X/30/160-14 D18 | RAX040B0W0 |
| 48 | 30 | 0,33 | 69 | 2087 | 350 | LAC 40X/30/160-14 D19 | RAX040B0W1 |

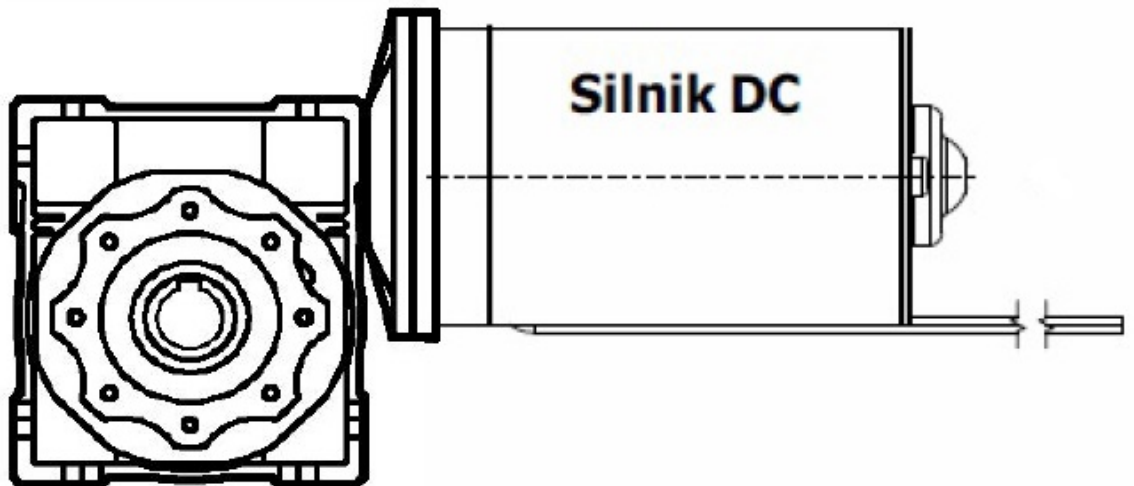


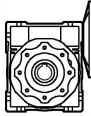
Coupling of motor
Sprzęgło do silnika
Ø105-Ø14
Ø160-Ø14

Silnik DC 24V do przekładni ślimakowej,
P - 220W, 1700 obr/min bez obciążenia,
Ma nominalny - 0,3Nm, Ma max rozruchowy - 1,5Nm



| M2 [Nm] | iR | P [kW] | sprawność % | FRs [N] | FRe [N] | Tipo Typ Type | Código Referenz Ref. |
|------------|-----|-----------|----------------|------------|------------|------------------------|----------------------------|
| 48 | 30 | 0,33 | 69 | 2087 | 350 | LAC 40X/30/105-14 D18 | RAX040B0X0 |
| 48 | 30 | 0,33 | 69 | 2087 | 350 | LAC 40X/30/105-14 D19 | RAX040B0X1 |
| 39 | 25 | 0,3 | 74 | 1964 | 350 | LAC 40X/25/160-14 D18 | RAX040B0Y0 |
| 39 | 25 | 0,3 | 74 | 1964 | 350 | LAC 40X/25/160-14 D19 | RAX040B0Y1 |
| 39 | 25 | 0,3 | 74 | 1964 | 350 | LAC 40X/25/105-14 D18 | RAX040B0Z0 |
| 39 | 25 | 0,3 | 74 | 1964 | 350 | LAC 40X/25/105-14 D19 | RAX040B0Z1 |
| 43 | 20 | 0,4 | 77 | 1824 | 350 | LAC 40X/20/160-14 D18 | RAX040B100 |
| 43 | 20 | 0,4 | 77 | 1824 | 350 | LAC 40X/20/160-14 D19 | RAX040B101 |
| 43 | 20 | 0,4 | 77 | 1824 | 350 | LAC 40X/20/105-14 D18 | RAX040B110 |
| 43 | 20 | 0,4 | 77 | 1824 | 350 | LAC 40X/20/105-14 D19 | RAX040B111 |
| 44 | 15 | 0,52 | 81 | 1657 | 344 | LAC 40X/15/160-14 D18 | RAX040B120 |
| 44 | 15 | 0,52 | 81 | 1657 | 344 | LAC 40X/15/160-14 D19 | RAX040B121 |
| 44 | 15 | 0,52 | 81 | 1657 | 344 | LAC 40X/15/105-14 D18 | RAX040B130 |
| 44 | 15 | 0,52 | 81 | 1657 | 344 | LAC 40X/15/105-14 D19 | RAX040B131 |
| 44 | 10 | 0,76 | 85 | 1447 | 344 | LAC 40X/10/160-14 D18 | RAX040B140 |
| 44 | 10 | 0,76 | 85 | 1447 | 344 | LAC 40X/10/160-14 D19 | RAX040B141 |
| 44 | 10 | 0,76 | 85 | 1447 | 344 | LAC 40X/10/105-14 D18 | RAX040B150 |
| 44 | 10 | 0,76 | 85 | 1447 | 344 | LAC 40X/10/105-14 D19 | RAX040B151 |
| 42 | 7,5 | 0,94 | 86 | 1315 | 292 | LAC 40X/7,5/160-14 D18 | RAX040B160 |
| 42 | 7,5 | 0,94 | 86 | 1315 | 292 | LAC 40X/7,5/160-14 D19 | RAX040B161 |
| 42 | 7,5 | 0,94 | 86 | 1315 | 292 | LAC 40X/7,5/105-14 D18 | RAX040B170 |
| 42 | 7,5 | 0,94 | 86 | 1315 | 292 | LAC 40X/7,5/105-14 D19 | RAX040B171 |
| 36 | 5 | 1,19 | 88 | 1149 | 250 | LAC 40X/5/160-14 D18 | RAX040B180 |
| 36 | 5 | 1,19 | 88 | 1149 | 250 | LAC 40X/5/160-14 D19 | RAX040B181 |
| 36 | 5 | 1,19 | 88 | 1149 | 250 | LAC 40X/5/105-14 D18 | RAX040B190 |
| 36 | 5 | 1,19 | 88 | 1149 | 250 | LAC 40X/5/105-14 D19 | RAX040B191 |





LACX

Coupling of motor

Sprzęgło do silnika

Ø105-Ø14

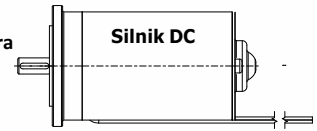
Ø160-Ø14

Coupling of reducer

Sprzęgło do reduktora

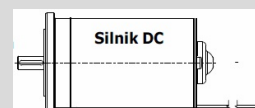
Ø105-Ø14

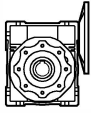
Ø160-Ø14



| Wielkość mechaniczna reduktora ślimakowego | rozmiar sprzęgła pod silnik | I rzeczywiste | | | | | | | | | | | |
|--|-----------------------------|---------------|-----|----|----|----|----|----|----|----|----|----|-----|
| | | 5 | 7,5 | 10 | 15 | 20 | 25 | 30 | 40 | 50 | 60 | 80 | 100 |
| | | | | | | | | | | | - | - | - |
| | | | | | | | | | | | - | - | - |
| | | | | | | | | | | | | | - |
| | | | | | | | | | | | | | - |
| 40 | 160-14 | | | | | | | | | | - | - | - |
| | 105-14 | | | | | | | | | | - | - | - |
| | | | | | | | | | | | | | |
| | | - | - | - | - | - | - | - | - | - | - | - | - |
| 50 | | | | | | | | | | | - | - | - |
| | | | | | | | | | | | - | - | - |
| | 160-14 | | | | | | | | | | | | - |
| | 105-14 | | | | | | | | | | | | - |
| | | | | | | | | | | | | | |
| | - | - | - | - | - | - | - | - | - | - | - | - | |
| 63 | | - | | | | | | | | | - | - | - |
| | | - | | | | | | | | | - | - | - |
| | | - | | | | | | | | | | - | - |
| | | - | | | | | | | | | | - | - |
| | | | | | | | | | | | | | |
| | 160-14 | - | - | - | - | - | - | - | | | | | |
| | 105-14 | - | - | - | - | - | - | - | | | | | |
| 75 | | - | | | | | | | | | - | - | - |
| | | - | | | | | | | | | - | - | - |
| | | - | | | | | | | | | - | - | - |
| | | - | | | | | | | | | - | - | - |
| | | - | | | | | | | | | - | - | - |
| | | 160-14 | - | - | - | - | - | - | - | | | | |
| | | - | | | | | | | | | - | - | - |
| | | | | | | | | | | | | | |
| | | | | | | | | | | | | | |
| | | | | | | | | | | | | | |
| | | | | | | | | | | | | | |

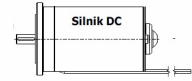
Silnik DC 24V do przekładni ślimakowej,
P - 220W, 1700 obr/min bez obciążenia,
Ma max rozruchowy - 1,5Nm





LACX

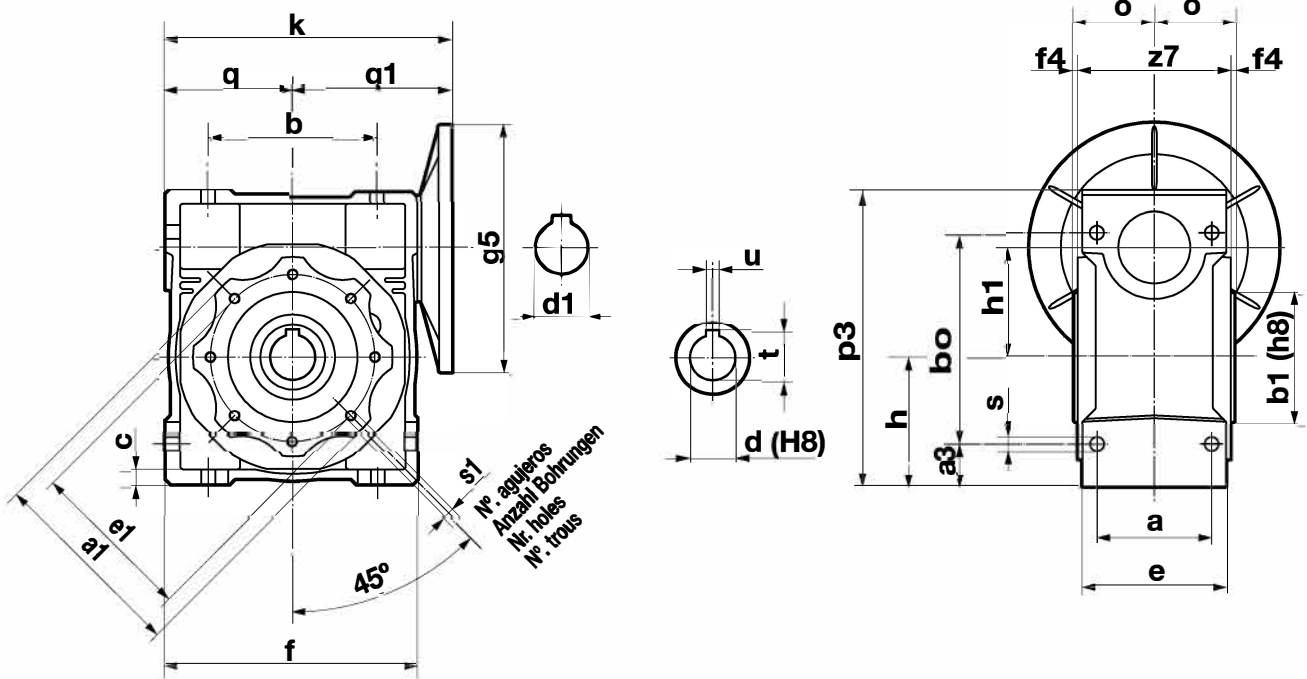
Kołnierze IEC 160-14 105-14 dla silnika 24V DC i przekładni ślimakowych



| Typo Typ Type | g5-d1 | IR | | | | | | | | | | | |
|---------------------|--------|----|-----|----|----|----|----|----|----|----|----|----|-----|
| | | 5 | 7,5 | 10 | 15 | 20 | 25 | 30 | 40 | 50 | 60 | 80 | 100 |
| | | | | | | | | | | | - | - | - |
| | | | | | | | | | | | - | - | - |
| | | | | | | | | | | | | | - |
| 40 | 160-14 | | | | | | | | | | - | - | - |
| | 105-14 | | | | | | | | | | - | - | - |
| | | | | | | | | | | | | | - |
| 50 | | | | | | | | | | | | | - |
| | 160-14 | | | | | | | | | | | | - |
| | 105-14 | | | | | | | | | | | | - |
| 63 | | | | | | | | | | | | | - |
| | | | | | | | | | | | | | - |
| | | | | | | | | | | | | | - |
| 75 | 160-14 | | | | | | | | | | | | - |
| | 105-14 | | | | | | | | | | | | - |
| | | | | | | | | | | | | | - |
| | | | | | | | | | | | | | - |
| | | | | | | | | | | | | | - |
| | | | | | | | | | | | | | - |
| | | | | | | | | | | | | | - |
| | | | | | | | | | | | | | - |
| | | | | | | | | | | | | | - |
| | | | | | | | | | | | | | - |
| | | | | | | | | | | | | | - |
| | | | | | | | | | | | | | - |
| | | | | | | | | | | | | | - |
| | | | | | | | | | | | | | - |
| | | | | | | | | | | | | | - |

Silnik DC 24V do przekładni ślimakowej,
P - 220W, 1700 obr/min bez obciążenia,
Ma max rozruchowy - 1,5Nm

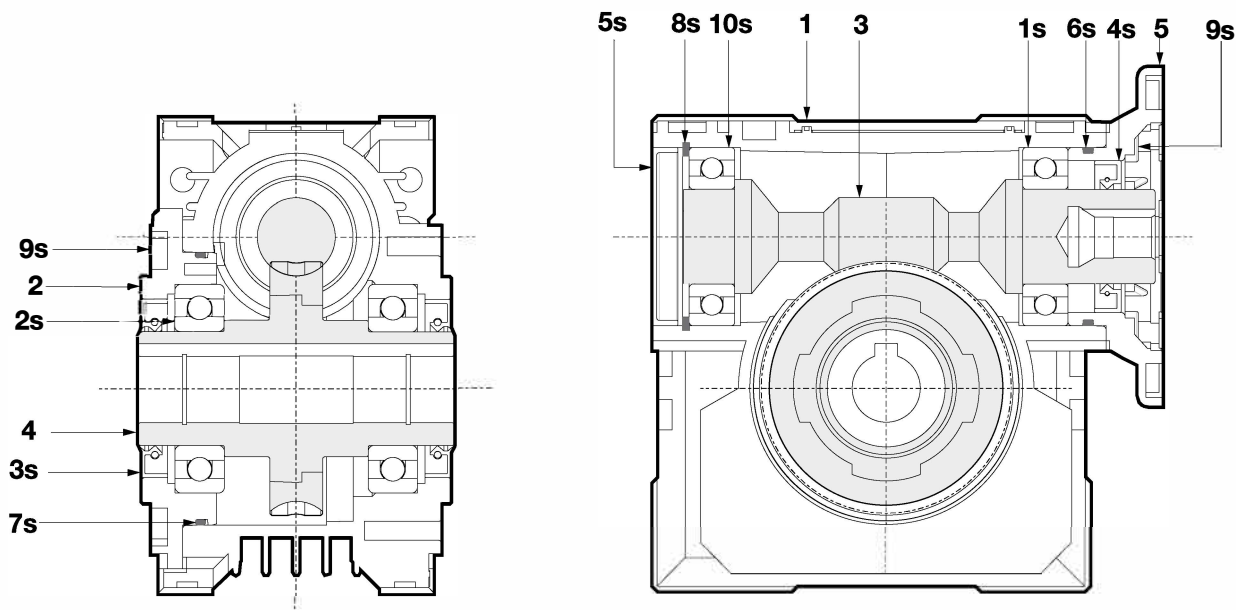




Wymiary g5 oraz d(H8) na stronie

| Typo Typ Type | Peso Gew. Weight Masa (Kg.) | k | a | a1 | a3 | b | b0 | b1 | c | e | e1 | f | f4 | h | h1 | o | p3 | q | q1 | s | s1 (Nº. agujer.) (Anzahl Bohrungen) (Nr. holes) (Nº. otworów) | z7 | d | t | u |
|---------------------|---|-------|----|-----|----|-----|-----|----|-----|-----|-----|-----|-----|----|----|----|-------|----|-------|------|--|-----|--------------------|--------------------------|-----------|
| 40 | 2,3 | 120 | 60 | 87 | 15 | 70 | 90 | 60 | 6,5 | 71 | 75 | 100 | 2,5 | 50 | 40 | 39 | 121,5 | 50 | 70 | 6,5 | M6x11 (4) | 73 | 18 (19) | 20.8 (21.8) | 6 |
| 50 | 3,5 | 140 | 70 | 100 | 20 | 80 | 104 | 70 | 7 | 85 | 85 | 120 | 2,5 | 60 | 50 | 46 | 144 | 60 | 80 | 8,5 | M8x10 (4) | 87 | 25 (24) | 28.3 (27.3) | 8 |
| 63 | 6,2 | 167 | 85 | 110 | 22 | 100 | 130 | 80 | 8 | 103 | 95 | 144 | 3 | 72 | 63 | 56 | 174 | 72 | 95 | 8,5 | M8x14 (8) | 106 | 25 (28) (30) | 28.3 (31.3) (33,3) | 8 |
| 75 | 9 | 198,5 | 90 | 140 | 26 | 120 | 153 | 95 | 10 | 112 | 115 | 172 | 3 | 86 | 75 | 60 | 205 | 86 | 112,5 | 11,5 | M8x14 (8) | 114 | 28 (35) | 31.3 (38.3) | 8 (10) |

**Przekładnie ślimakowe do silnika DC 24V
z kołnierzem IEC 160-14 lub 105-14**

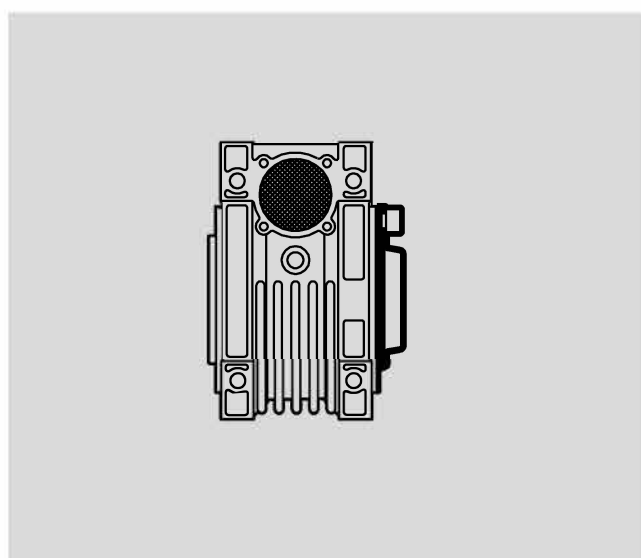
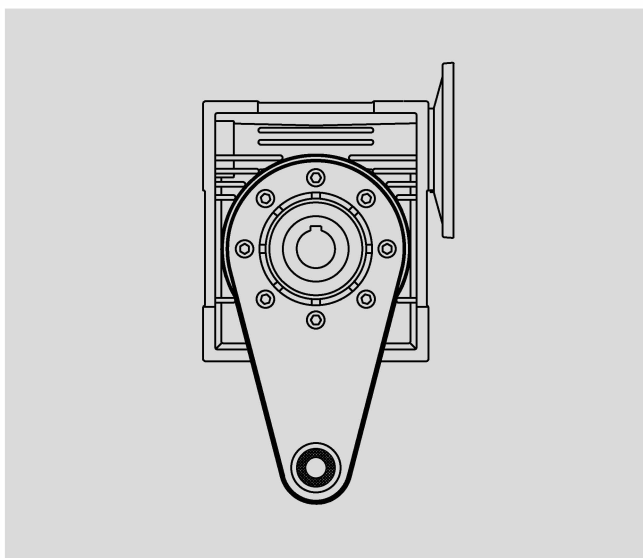
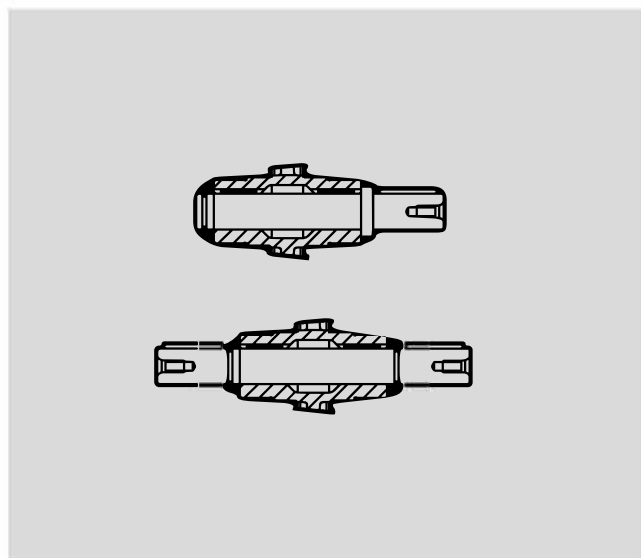
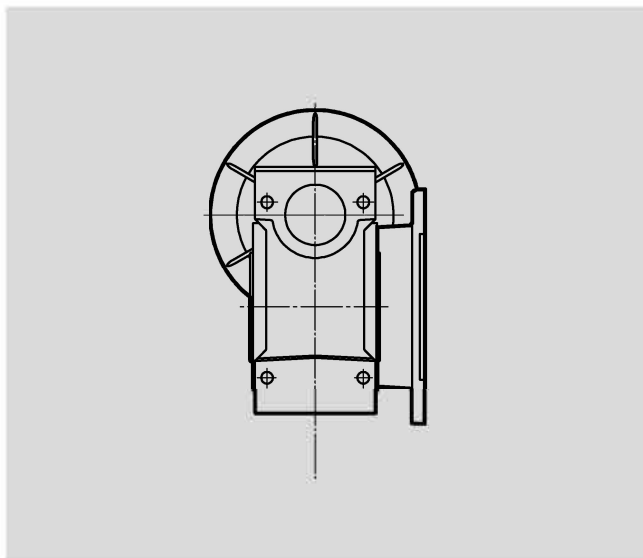


| Ref. Pos.Nr. Ref. Réf. | Denominación Bezeichnung Denomination Nazwa części | | | |
|---------------------------------|---|-------------------------------------|------------------------------|------------------------------|
| 1 | Caja | Getriebe- gehäuse | Box | Carter |
| 2 | Tapa salida | Ausgangs- Getriebe- deckel | Output cover | Couvercle sortie |
| 3 | Visifin | Schnecke | Endless screw | Vis sans fin |
| 4 | Corona eje salida hueco | Bronzerad Hohlabtriebs- welle | Hollow output shaft crown | Couronne axe creux sortie |
| 5 | Brida unión | Motorflansch | Motor flange | Bride moteur |
| 1s | Rodamiento | Wälzlager | Bearing | Roulement |
| 2s | Rodamiento | Wälzlager | Bearing | Roulement |
| 3s | Retén | Wellendicht- ring | Oil seal | Joint |

| Ref. Pos.Nr. Ref. Réf. | Denominación Bezeichnung Denomination Nazwa części | | | |
|---------------------------------|---|-----------------------|-------------------|-----------------------|
| 4s | Retén | Wellendicht- ring | Oil seal | Joint |
| 5s | Tapón ciego | Verschluss- kappe | Bull plug | Bouchon aveugle |
| 6s | Junta tórica | O-Ring | O-ring gasket | Joint thorique |
| 7s | Junta tórica | O-Ring | O-ring gasket | Joint thorique |
| 8s | Anillo elástico | Sicherungs- ring | Elastic ring | Anneau élas- tique |
| 9s | Tornillo cilín- drico | Zylinder- schraube | Cylinder screw | Vis cylindri- que |
| 10s | Rodamiento | Wälzlager | Bearing | Roulement |

Reductores de tornillo sin fin

Reduktory ślimakowe LACX - wyposażenie



SUPLEMENTOS Serie "LACX-LAX-LAXC/LAX DOBLES"

Brida salida - Ejes salida - Brazo de reacción - Cubierta.

ZUSATZAUSRÜSTUNG Serie "LACX-LAX-LAXC/LAX DOPPELSCHNECKE"

Zusatzabtriebsflansch - Zusatzausrüstung Abtriebswelle - Drehmomentstütze - Deckel

SUPPLEMENTS Serie "LACX-LAX-LAXC/LAX DOUBLE WORM"

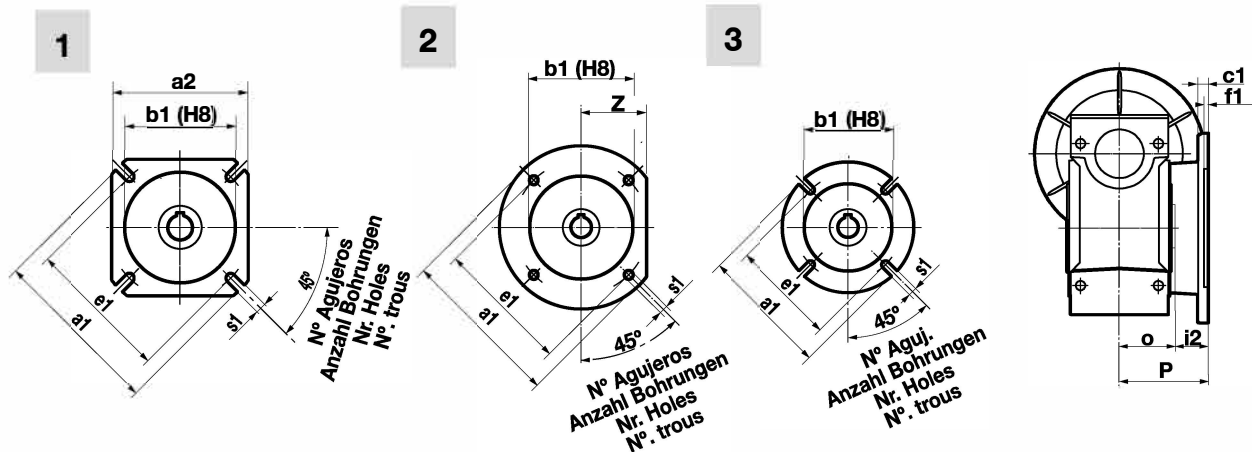
Output flange - Output shaft - Torque arm - Cover

WYPOSAŻENIE reduktorów ślimakowych serii LACX

wały wolnobrotowe pełne, kołnierze mocujące, ramię reakcyjne, pokrywa ochronna wału wolnobrotowego

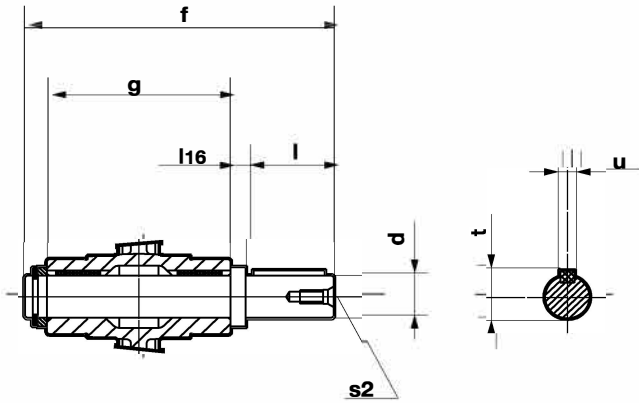


FORMA / FORM / FORM / FORMA

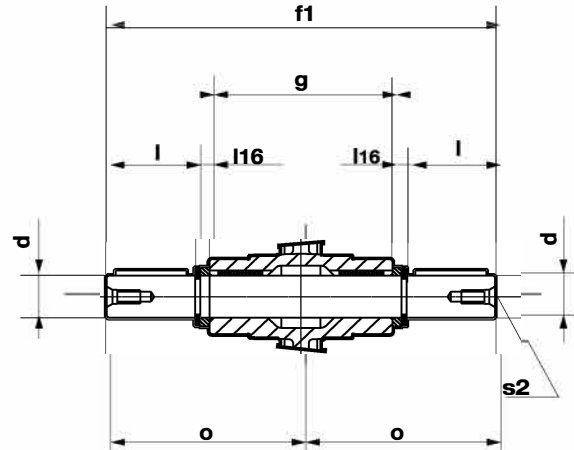


| Typo Typ Type Typ | Código Referenz Reference Kod | Forma Form Form Forme | a1 | a2 | b1 (H8) | c1 | e1 | f1 | i2 | o | p | s1 | Nº Aguj. Anz.Bohr. Nr. Holes Nº. Otwory | z |
|----------------------------|--|--------------------------------|-----|-----|------------|------|----------|----|------|----|------|-----|--|----|
| | | | | | | | | | | | | | | - |
| 40 | SBAX040000 | 1 | 110 | 95 | 60 | 7 | 80 (min) | 4 | 28 | 39 | 67 | 9 | 4 | - |
| | SBAX040010 | 1 | 110 | 95 | 60 | 7 | 80 (min) | 4 | 58 | 39 | 97 | 9 | 4 | - |
| | SBAX040020 | 2 | 140 | - | 95 | 9 | 115 | 5 | 41 | 39 | 80 | 9,5 | 4 | 56 |
| | SBAX040030 | 2 | 120 | - | 80 | 12 | 100 | 5 | 19 | 39 | 58 | 9 | 4 | 50 |
| 50 | SBAX050000 | 1 | 125 | 110 | 70 | 9 | 90 min | 5 | 44 | 46 | 90 | 11 | 4 | - |
| | SBAX050010 | 1 | 125 | 110 | 70 | 9 | 90 min | 5 | 74 | 46 | 120 | 11 | 4 | - |
| | SBAX050020 | 2 | 160 | - | 110 | 10 | 130 | 5 | 43 | 46 | 89 | 9,5 | 4 | 66 |
| | SBAX050030 | 2 | 140 | - | 95 | 14,5 | 115 | 5 | 26 | 46 | 72 | 11 | 4 | 60 |
| 63 | SBAX063000 | 1 | 180 | 142 | 115 | 10 | 150 | 6 | 26 | 56 | 82 | 11 | 4 | - |
| | SBAX063010 | 1 | 180 | 142 | 115 | 10 | 150 | 6 | 56 | 56 | 112 | 11 | 4 | - |
| | SBAX063020 | 2 | 200 | - | 130 | 10 | 165 | 5 | 42 | 56 | 98 | 11 | 4 | 80 |
| | SBAX063030 | 2 | 200 | - | 130 | 10 | 165 | 5 | 51 | 56 | 107 | 11 | 4 | 80 |
| | SBAX063040 | 3 | 160 | - | 110 | 16,5 | 130 | 5 | 24,5 | 56 | 80,5 | 11 | 4 | - |
| 75 | SBAX075000 | 1 | 200 | 170 | 130 | 13 | 165 | 6 | 51 | 60 | 111 | 14 | 4 | - |
| | SBAX075010 | 3 | 160 | - | 110 | 13 | 130 | 6 | 30 | 60 | 90 | 11 | 4 | - |
| | | | | | | | | | | | | | | - |
| | | | | | | | | | | | | | | - |

Pojedynczy wał wolnobrotowy



Podwójny wał wolnobrotowy



| Typ | reduktora ślimakowego LACX | kod wału | l16 | o | s2 | d | l | t | u | g | f | f1 |
|-----|--|----------|-----|-------|-----|----------------------------------|----------------------|----------------------|---|-----|-----|-----|
| 40 | SEAX040000 SEAX040060 SEAX040010 | | 3 | 82 | M6 | 18 h6 19 h6 18 h6 | 40 | 20,5 21,5 20,5 | 6 | 78 | 128 | 164 |
| 50 | SEAX050000 SEAX050040 SEAX050010 | | 3,5 | 99,5 | M10 | 25 h6 24 h6 25 h6 | 50 | 28 27 28 | 8 | 92 | 153 | 199 |
| 63 | SEAX063000 SEAX063020 SEAX063030 SEAX063010 | | 3,5 | 109,5 | M10 | 25 h6 28 h6 30 h6 25 h6 | 50 60 60 50 | 28 31 33 28 | 8 | 112 | 173 | 219 |
| 75 | SEAX075000 SEAX075020 SEAX075010 | | 3,5 | 123,5 | M10 | 28 h6 35 h6 28 h6 | 60 | 31 38 31 | 8 | 120 | 192 | 247 |

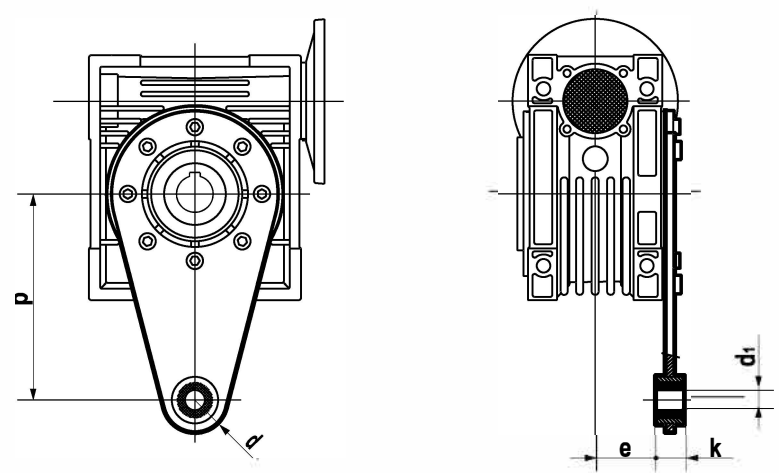


SUPLEMENTOS
"BRAZO DE REACCION"

ZUSATZAUSRÜSTUNG
"DREHMOMENTSTÜTZE"

SUPPLEMENTS
"TORQUE ARM"

Wyposażenie
Ramię Reakcyjne



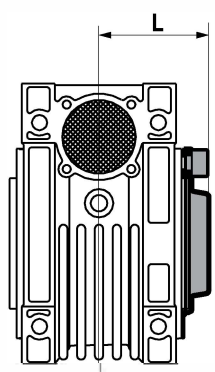
| Typo Typ Type Typ | Código Referenz Reference Kod | d | d1 | k | p | e |
|----------------------------|--|----|----|----|-----|------|
| 40 | SRAX040000 | 18 | 10 | 14 | 100 | 31,5 |
| 50 | SRAX050000 | 18 | 10 | 14 | 100 | 38,5 |
| 63 | SRAX063000 | 18 | 10 | 14 | 150 | 49 |
| 75 | SRAX075000 | 30 | 20 | 25 | 200 | 47,5 |

SUPLEMENTOS
"TAPA PROTECTORA"

ZUSATZAUSRÜSTUNG
"DECKEL"

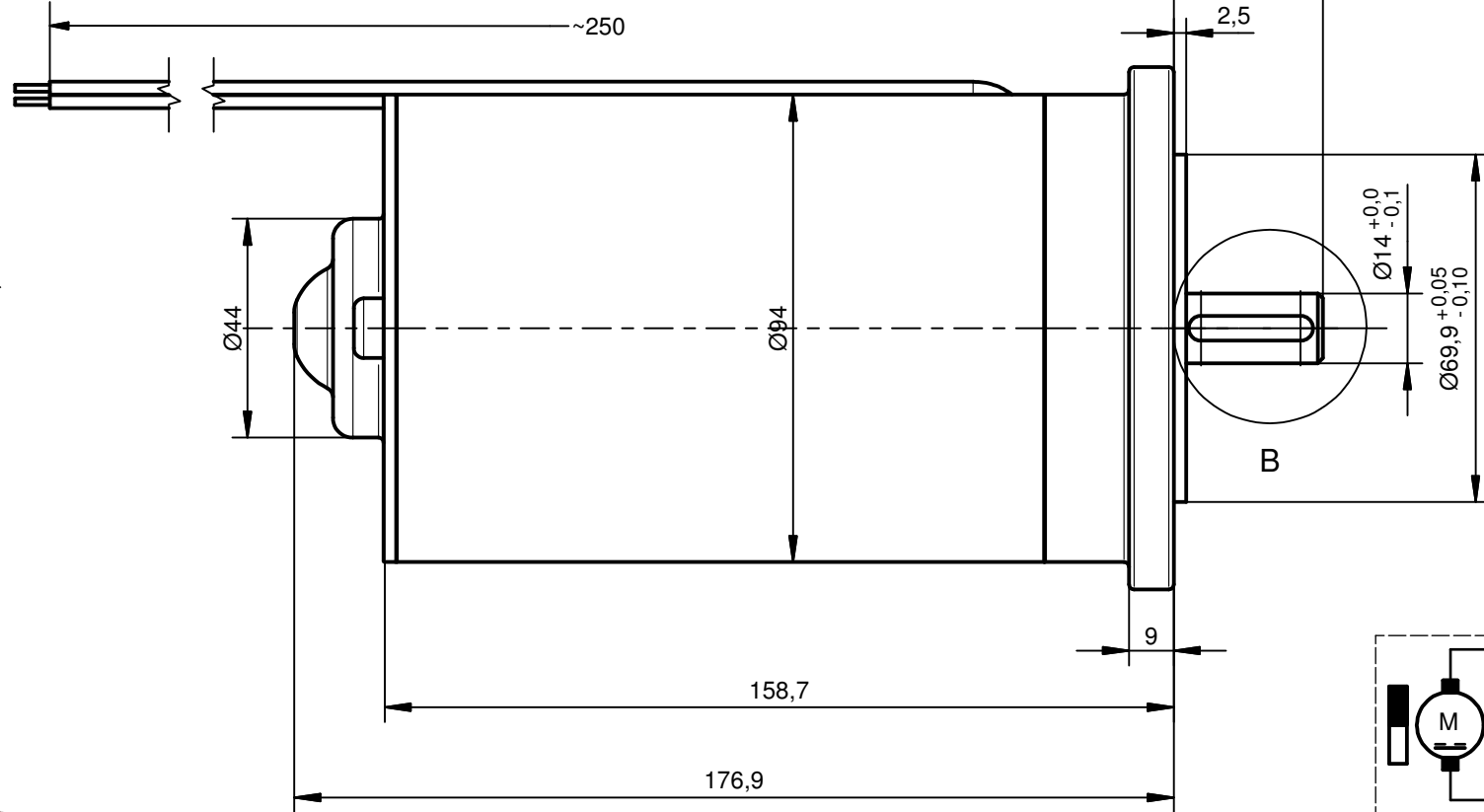
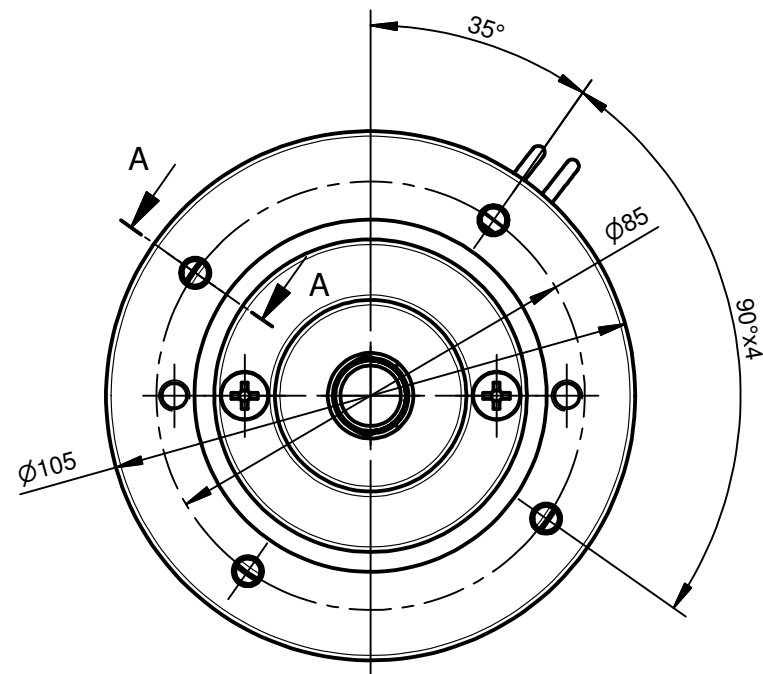
SUPPLEMENTS
"COVER"

Wyposażenie
Pokrywa wału wolnoobrotowego

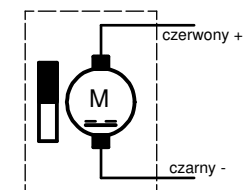
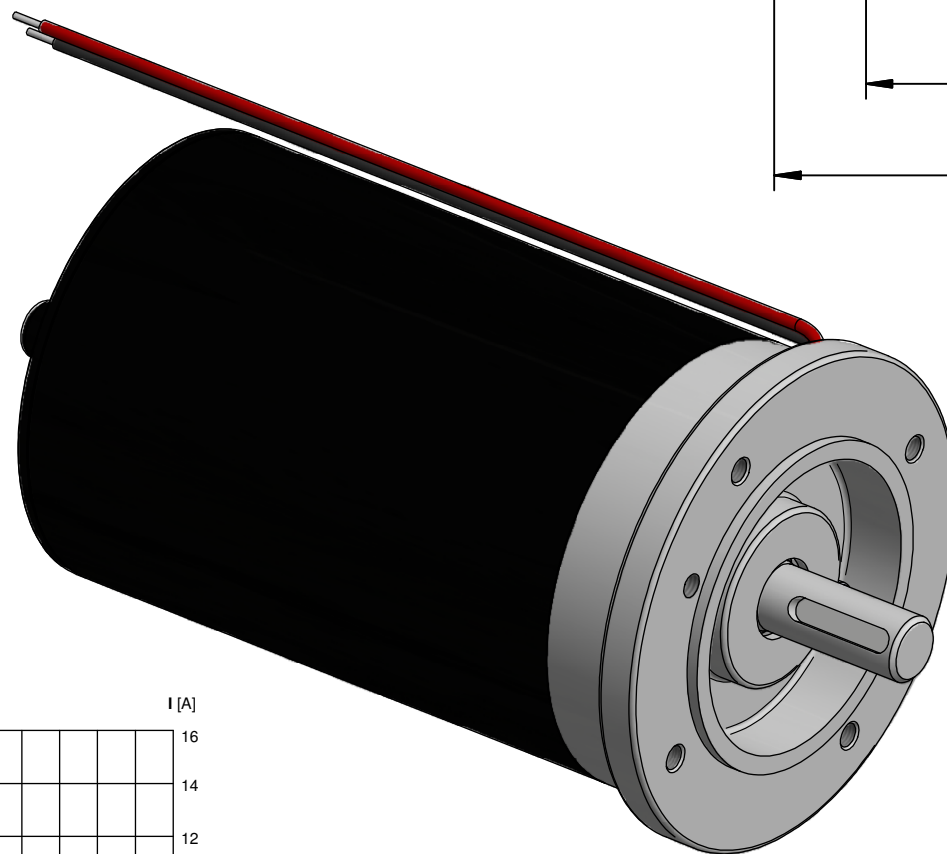
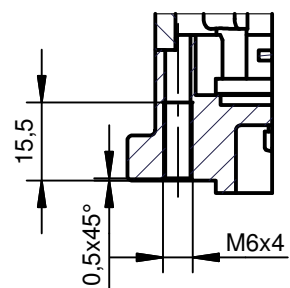


| Typo Typ Type Type | Código Referenz Reference Référence | L |
|-----------------------------|--|------|
| 40 | STAX040000 | 50 |
| 50 | STAX050000 | 57,5 |
| 63 | STAX063000 | 68,5 |
| 75 | STAX075000 | 73,5 |

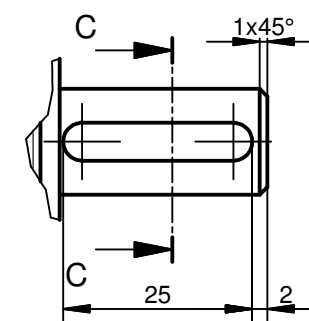
Silnik 24V DC dla przekładni ślimakowej lub walcowej z kołnierzem IEC B14-2 105-14



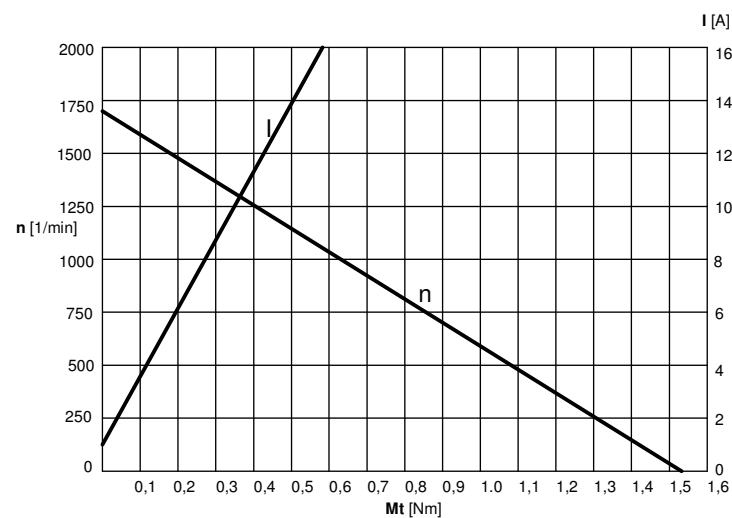
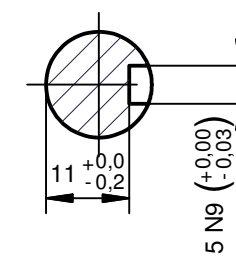
A-A (1 : 1,5)




B (1 : 1)



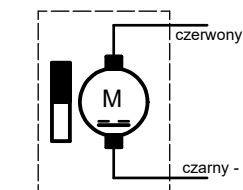
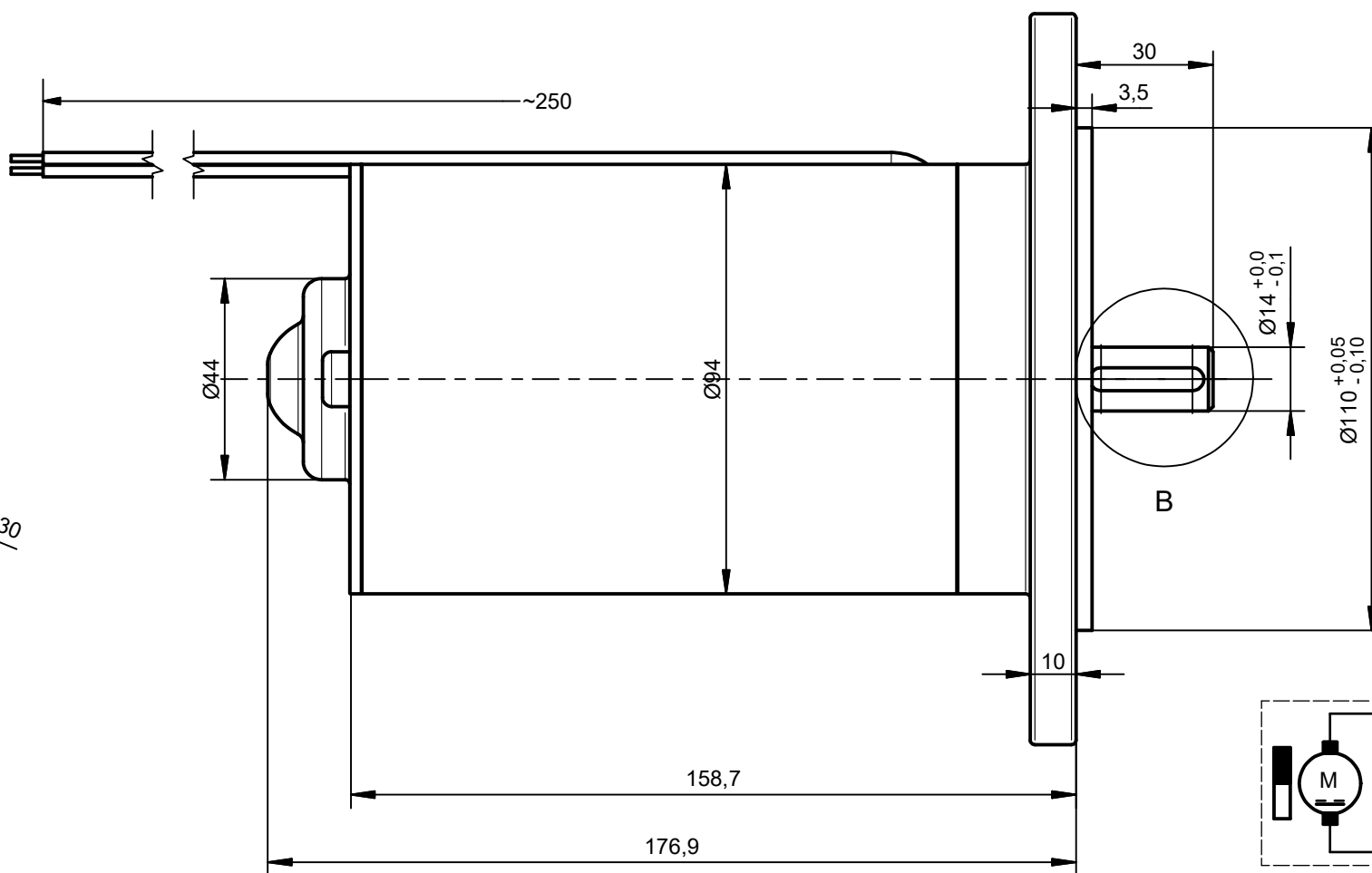
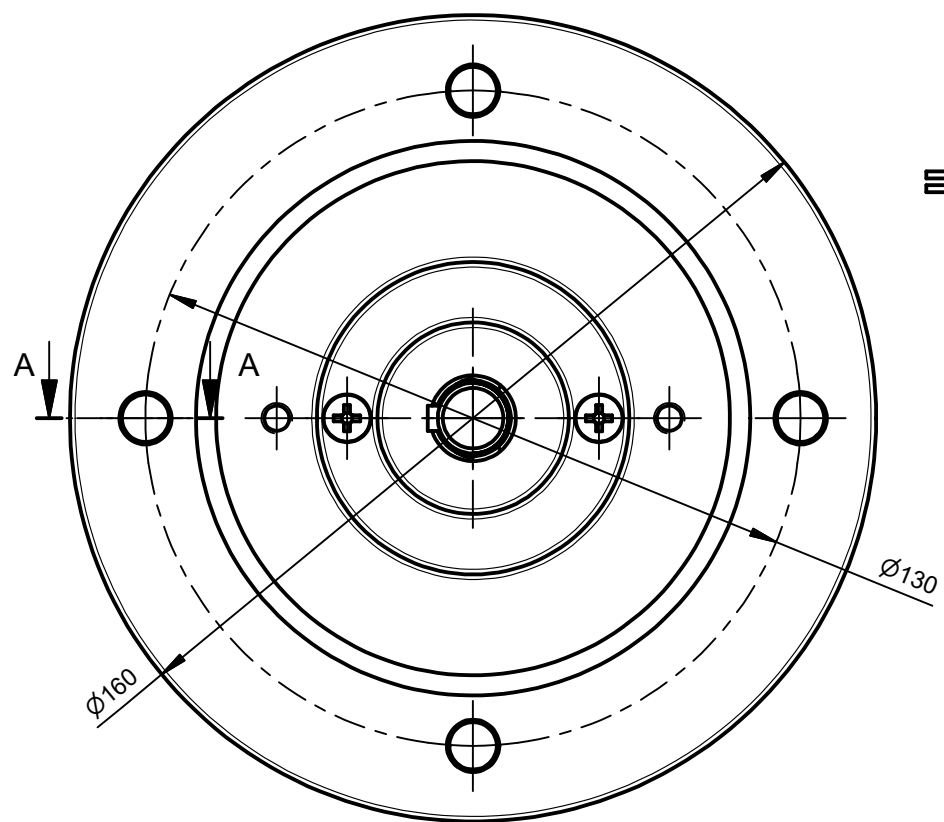
C-C (1 : 1)



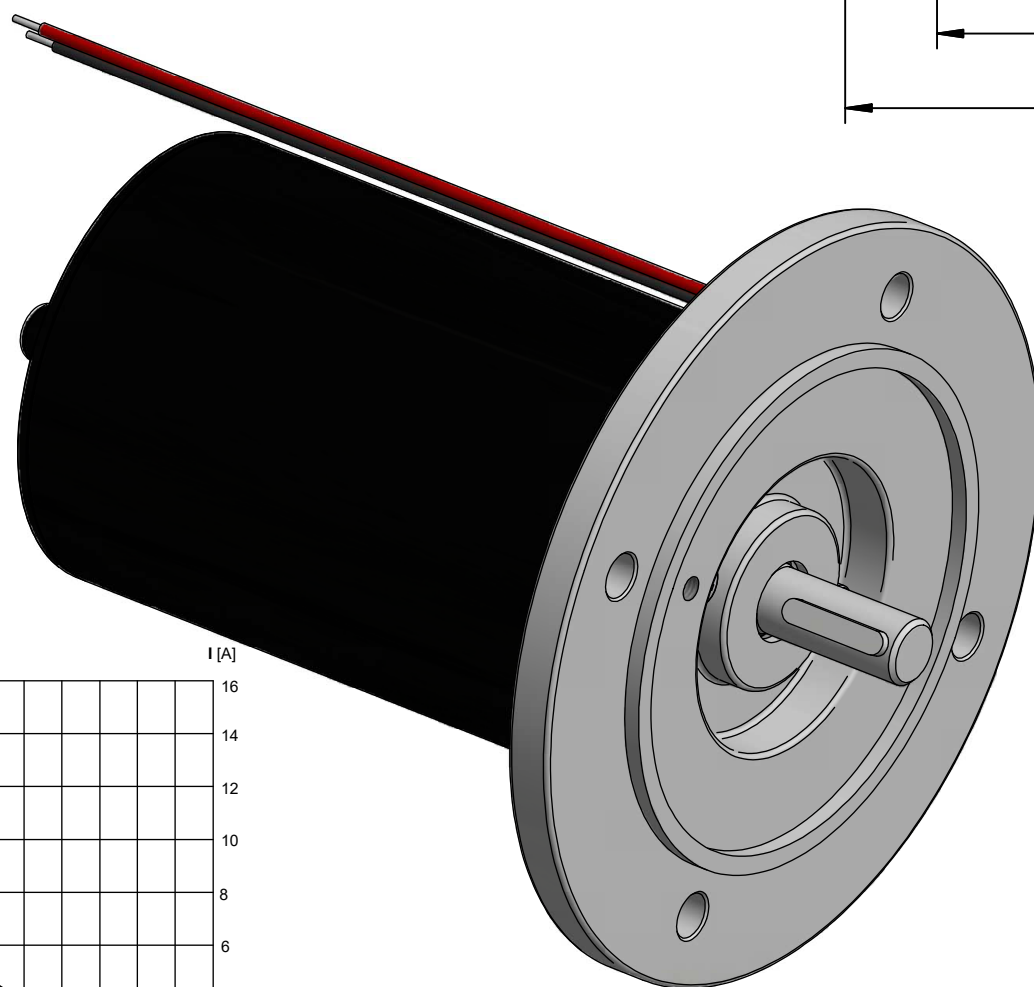
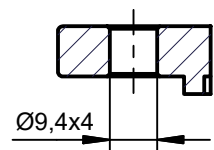
- Napięcie nominalne $U=24V$
- Obroty na biegu luzem 1700 RPM
- Prąd biegu luzem 1,2 A
- Prąd punktu pracy 9 - 10 A
- Moc punktu pracy 220 W
- IP 55
- Max moment rozruchowy 1,5 Nm
- Temperatura obudowy silnika do 60 st C
- Żywotność obliczeniowa 1000 godzin pracy ciągłej
- Charakter pracy silnika - praca dorywcza S2

| | | | | | |
|--|--------------|------------|--------------------|---|--------------|
| n1 | 1700 obr/min | bieg luzem | Heat treatment | Kontakt do dostawcy : | Sheet No. |
| Moc | 220W | | | e-mail: biuro@technical.pl ; tel.+48 63 27 25 478 | 1 of 1 |
| Kołnierz | B14/2 | 105-14 | Data: 19 02 2020r. | www.technical.pl | Scale |
| Prąd | nominalny | ~ 9 -10A | | NAME Silnik elektryczny prądu stałego DC 24V | 1 : 1,5 |
| IP 55 | | | Format A3 | PART NO. 3XX-09.03.2020 | Rev. |
| Dostawca:  TECHNICAL GRZEGORZ TĘGOS | | | | | |
| General tolerances: ISO 2768-m | | | | Cat.No./ Product | Mass 3,45 kg |

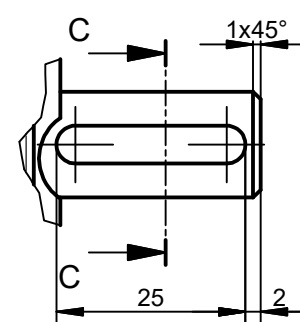
Silnik DC 24V dla przekładni ślimakowej lub walcowej z kołnierzem IEC B5 160-14



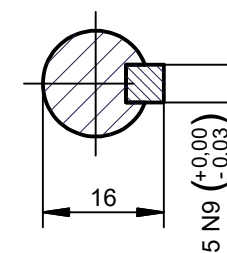
A-A (1 : 1,5)



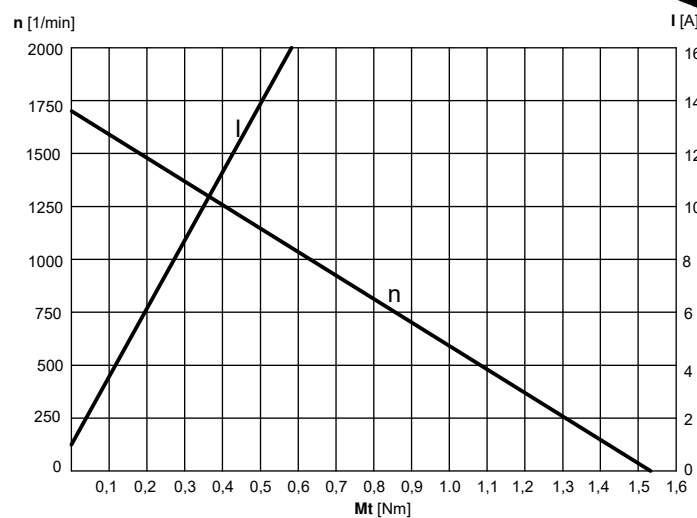
B (1 : 1)




C-C (1 : 1)



1. Napięcie nominalne U=24V
 2. Obroty na biegu luzem 1700 RPM
 3. Prąd biegu luzem 1,2 A
 4. Moment max rozruchowy 1,5 Nm
 5. Prąd znamionowy 9,5 A
 6. IP 55
- Charakter pracy silnika - praca dorywcza S2



| | | | | | |
|--------------------------------|--------------|------------|---|--|------------------|
| n1 | 1700 obr/min | bieg luzem | Data: 27.04.2020r. | Kontakt do dostawcy : e-mail: biuro@technical.pl ; tel.+48 63 27 25 478 | Sheet No. |
| Moc | 220W | | | | 1 of 1 |
| Kołnierz | B5 | 160-14 | Format A3 | NAME Silnik elektryczny prądu stałego DC 24V | Scale |
| Prąd | nominalny | ~ 9,5A | | | 1 : 1,5 |
| IP 55 | | | Dostawca:  TECHNICAL GRZEGORZ TĘGOS | PART NO. 3XX-27.04.2020 | Rev. |
| General tolerances: ISO 2768-m | | | | | Cat.No./ Product |