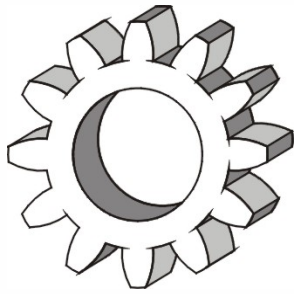


DYSTRYBUTOR



**TECHNICAL**

**GRZEGORZ TĘGOS**

TECHNIKA NAPĘDU I TRANSMISJI MOCY

62-600 Koło, ul. Toruńska 212  
tel. 0-63/ 27 25 478 / fax. 0-63/ 26 16 258

[www.technical.pl](http://www.technical.pl)  
[biuro@technical.pl](mailto:biuro@technical.pl)

Sklep internetowy  
[www.sklep.technical.pl](http://www.sklep.technical.pl)

**Silnik DC 24V  
z przekładnią walcową**

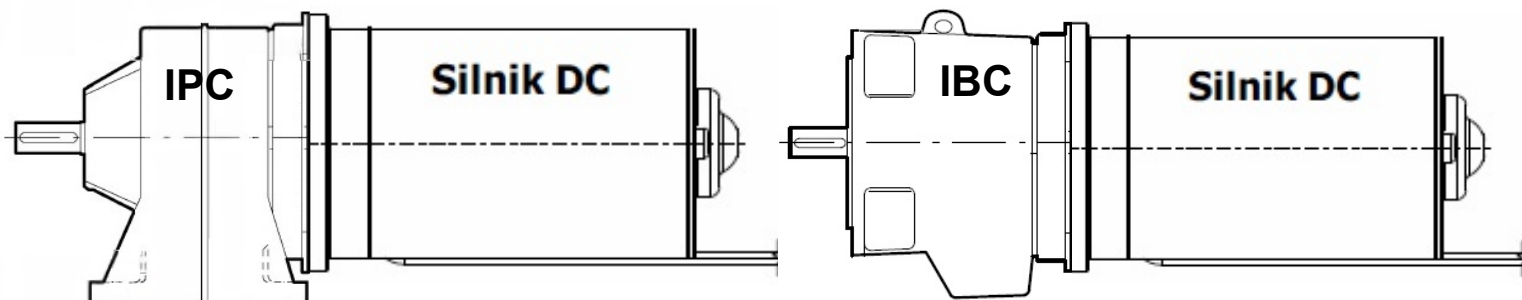
# Motoreduktory z: silnik DC 24V z przekładnią walcową

PROGRAMA DE FABRICACION	FERTIGUNGSPROGRAMM	MANUFACTURE PROGRAMME	PROGRAM Fabryczny
----------------------------	--------------------	--------------------------	----------------------

ØKolnierza - Øwału

## Wartości obliczeniowe dla n1 1400 obr/min

Silnika i reduktora IEC	$M_2$ (máx) [Nm]	$i_R$	P [kW]	Sprawność [%]	FRa [N]	Typ reduktora	Numer Ref.	
<b>160-14</b>	<b>2 etapas / Double stage / Reduktory dwustopniowe</b>						IPC 128/100,11/160-14	3010030420
	159,40	100,11	0,25	92	6100	IBC 128/100,11/160-14	3011030420	
	181,89	71,40	0,4	92	5340	IPC 128/71,40/160-14	3010030410	
							IBC 128/71,40/160-14	3011030410
	169,90	66,69	0,4	92	5900	IPC 128/66,69/160-14	3010030400	
							IBC 128/66,69/160-14	3011030400
	197,14	51,59	0,6	92	4650	IPC 128/51,59/160-14	3010030390	
							IBC 128/51,59/160-14	3011030390
	181,74	47,56	0,6	92	4690	IPC 128/47,56/160-14	3010030110	
							IBC 128/47,56/160-14	3011030110
	158,39	41,45	0,6	92	4500	IPC 128/41,45/160-14	3010030380	
							IBC 128/41,45/160-14	3011030380
	164,17	34,37	0,75	92	4260	IPC 128/34,37/160-14	3010030120	
							IBC 128/34,37/160-14	3011030120
	158,26	27,61	0,9	92	3950	IPC 128/27,61/160-14	3010030130	
							IBC 128/27,61/160-14	3011030130
	130,23	22,72	0,9	92	3820	IPC 128/22,72/160-14	3010030140	
							IBC 128/22,72/160-14	3011030140
	79,02	20,68	0,6	92	3980	IPC 128/20,68/160-14	3010030430	
							IBC 128/20,68/160-14	3011030430
	104,49	18,23	0,9	92	3700	IPC 128/18,23/160-14	3010030150	
							IBC 128/18,23/160-14	3011030150
	63,17	16,53	0,6	92	3800	IPC 128/16,53/160-14	3010030440	
							IBC 128/16,53/160-14	3011030440
	78,93	13,77	0,9	92	3550	IPC 128/13,77/160-14	3010030160	
							IBC 128/13,77/160-14	3011030160
	124,19	11,47	1,7	92	3220	IPC 128/11,47/160-14	3010030170	
							IBC 128/11,47/160-14	3011030170
	108,22	9,44	1,8	92	3130	IPC 128/9,44/160-14	3010030310	
							IBC 128/9,44/160-14	3011030310
	96,82	6,91	2,2	92	3030	IPC 128/6,91/160-14	3010030320	
							IBC 128/6,91/160-14	3011030320
77,76	5,55	2,2	92	2980	IPC 128/5,55/160-14	3010030330		
						IBC 128/5,55/160-14	3011030330	
81,50	4,57	2,8	92	2800	IPC 128/4,57/160-14	3010030340		
						IBC 128/4,57/160-14	3011030340	
65,27	3,66	2,8	92	2780	IPC 128/3,66/160-14	3010030350		
						IBC 128/3,66/160-14	3011030350	
49,40	2,77	2,8	92	2700	IPC 128/2,77/160-14	3010030360		
						IBC 128/2,77/160-14	3011030360	
39,41	2,21	2,8	92	2650	IPC 128/2,21/160-14	3010030370		
						IBC 128/2,21/160-14	3011030370	



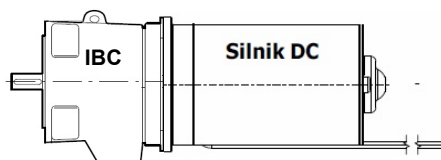
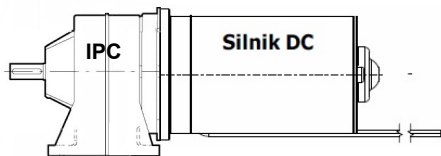
# Motoreduktory z: silnik DC 24V z przekładnią walcową

PROGRAMA DE FABRICACION	FERTIGUNGSPROGRAMM	MANUFACTURE PROGRAMME	PROGRAM Fabryczny
----------------------------	--------------------	--------------------------	----------------------

ØKołnierza - Øwału

## Wartości obliczeniowe dla n1 1400 obr/min

Silnika i reduktora IEC	$M_2$ (máx) [Nm]	$i_R$	P [kW]	Sprawność [%]	FRa [N]	Typ reduktora	Numer Ref.	
<b>160-14</b>	111,06	47,13	0,37	92	2800	IPC 102/47,13/160-14 IBC 102/47,13/160-14	3010021110 3011021110	
	94,34	35,27	0,42	92	3140	IPC 102/35,27/160-14 IBC 102/35,27/160-14	3010021120 3011021120	
	89,30	29,21	0,48	92	2970	IPC 102/29,21/160-14 IBC 102/29,21/160-14	3010021130 3011021130	
	86,17	24,60	0,55	92	2790	IPC 102/24,60/160-14 IBC 102/24,60/160-14	3010021140 3011021140	
	71,33	16,97	0,66	92	2650	IPC 102/16,97/160-14 IBC 102/16,97/160-14	3010021150 3011021150	
	68,75	12,70	0,85	92	2450	IPC 102/12,70/160-14 IBC 102/12,70/160-14	3010021160 3011021160	
	64,99	10,52	0,97	92	2340	IPC 102/10,52/160-14 IBC 102/10,52/160-14	3010021170 3011021170	
	62,07	8,86	1,1	92	2240	IPC 102/8,86/160-14 IBC 102/8,86/160-14	3010021310 3011021310	
	57,21	6,91	1,3	92	2180	IPC 102/6,91/160-14 IBC 102/6,91/160-14	RIP102B0M0 RIB102B0M0	
	58,29	5,72	1,6	92	2060	IPC 102/5,72/160-14 IBC 102/5,72/160-14	RIP102B0N0 RIB102B0N0	
	55,26	4,82	1,8	92	1980	IPC 102/4,82/160-14 IBC 102/4,82/160-14	RIP102B0P0 RIB102B0P0	
	49,80	3,91	2	92	1910	IPC 102/3,91/160-14 IBC 102/3,91/160-14	RIP102B0Q0 RIB102B0Q0	
	39,19	2,93	2,1	92	1860	IPC 102/2,93/160-14 IBC 102/2,93/160-14	RIP102B0R0 RIB102B0R0	
	31,30	2,34	2,1	92	1830	IPC 102/2,34/160-14 IBC 102/2,34/160-14	RIP102B0S0 RIB102B0S0	
		38,69	46,73	0,13	92	1930	IPC 84/46,73/160-14 IBC 84/46,73/160-14	RIP084B1F0 RIB084B1F0
		37,05	36,36	0,16	92	1780	IPC 84/36,36/160-14 IBC 84/36,36/160-14	RIP084B1G0 RIB084B1G0
		35,42	29,27	0,19	92	1650	IPC 84/29,27/160-14 IBC 84/29,27/160-14	RIP084B1H0 RIB084B1H0
		36,85	24,11	0,24	92	1500	IPC 84/24,11/160-14 IBC 84/24,11/160-14	RIP084B1J0 RIB084B1J0
		35,24	19,08	0,29	92	1250	IPC 84/19,08/160-14 IBC 84/19,08/160-14	RIP084B1K0 RIB084B1K0
		27,95	14,63	0,3	92	1290	IPC 84/14,63/160-14 IBC 84/14,63/160-14	RIP084B1L0 RIB084B1L0
	21,80	11,41	0,3	92	1280	IPC 84/11,41/160-14 IBC 84/11,41/160-14	RIP084B1M0 RIB084B1M0	
	21,22	8,77	0,38	92	1300	IPC 84/8,77/160-14 IBC 84/8,77/160-14	RIP084B1N0 RIB084B1N0	
	20,88	6,83	0,48	92	1220	IPC 84/6,83/160-14 IBC 84/6,83/160-14	RIP084B1P0 RIB084B1P0	
	20,98	5,49	0,6	92	1150	IPC 84/5,49/160-14 IBC 84/5,49/160-14	RIP084B1Q0 RIB084B1Q0	
	21,06	4,53	0,7	92	1080	IPC 84/4,53/160-14 IBC 84/4,53/160-14	RIP084B1R0 RIB084B1R0	
	20,75	3,58	0,91	92	1020	IPC 84/3,58/160-14 IBC 84/3,58/160-14	RIP084B1S0 RIB084B1S0	
	21,02	2,75	1,2	92	850	IPC 84/2,75/160-14 IBC 84/2,75/160-14	RIP084B1T0 RIB084B1T0	
	16,36	2,14	1,2	92	920	IPC 84/2,14/160-14 IBC 84/2,14/160-14	RIP084B1U0 RIB084B1U0	



**MOTORES PARA  
ACOPLAR  
DIRECTAMENTE A LOS  
REDUCTORES  
"IPC-IBC"**

**MOTOREN ZUM  
DIREKTANBAU AN DIE  
GETRIEBE  
"IPC-IBC"**

**MOTORS FOR  
COUPLING DIRECTLY  
TO GEARED  
UNITS  
"IPC-IBC"**

**Sprzęgło silnika i  
reduktora , IEC**

**REDUKTORY  
"IPC-IBC"**

Tipo Typ Type Type	$i_R$	Tipo motor Motor Baugr. Type of motor Type moteur				
		56	63	71	80	90
<b>84</b>	2.11					
	2.71					
	3.54					
	4.47					
	5.43					
	6.74					
	8.67					
	11.23					
	14.41					
	18.80					
	23.75					
	28.83					
	35.82					
	46.03					
<b>102</b>	2.34					
	2.93					
	3.91					
	4.82					
	5.72					
	6.91					
	8.86					
	10.52					
	11.90					
	12.70					
	14.80					
	16.97					
	19.94					
	24.60					
29.21						
35.27						
47.13						

**MOTORES PARA  
ACOPLAR  
DIRECTAMENTE A LOS  
REDUCTORES  
"IPC-IBC"**

**MOTOREN ZUM  
DIREKTANBAU AN DIE  
GETRIEBE  
"IPC-IBC"**

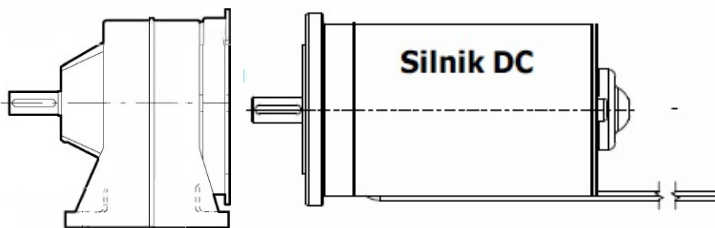
**MOTORS FOR  
COUPLING DIRECTLY  
TO GEARED  
UNITS  
"IPC-IBC"**

**Sprzęgło silnika  
i reduktora IEC**

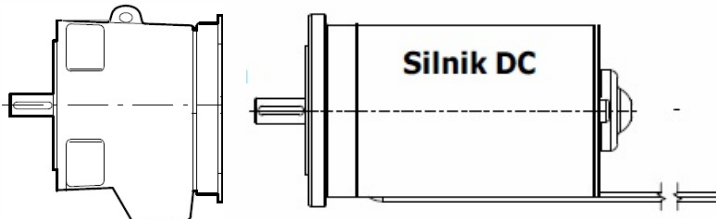
**REDUKTORY  
"IPC-IBC"**

Tpo Typ Type	$i_R$	Tpo motor Type of motor Typ silnika					
		56	63	71	80	90	100-112
<b>128</b>	2.21						
	2.77						
	3.66						
	4.57						
	5.55						
	6.91						
	9.44						
	11.47						
	13.77						
	16.53						
	18.23						
	20.68						
	22.72						
	27.61						
	34.37						
	41.45						
	47.56						
	51.59						
	66.69						
	71.40						
100.11							

**IEC**



**IEC**

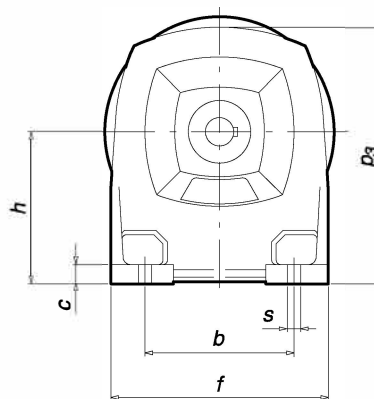
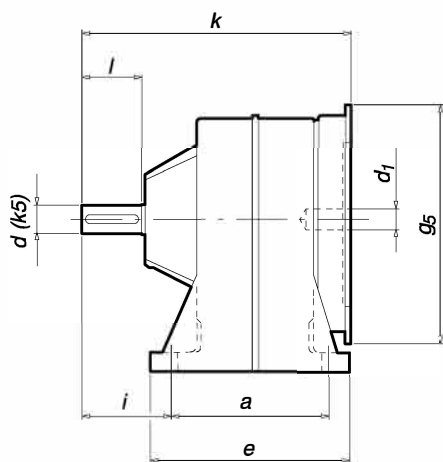


**“IPC”**  
DIMENSIONES (mm)

**“IPC”**  
ABMESSUNGEN (mm)

**“IPC”**  
DIMENSIONS (mm)

**“IPC”**  
WYMIARY (mm)



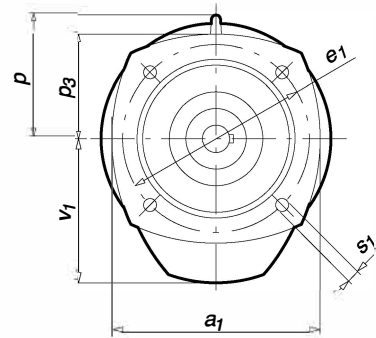
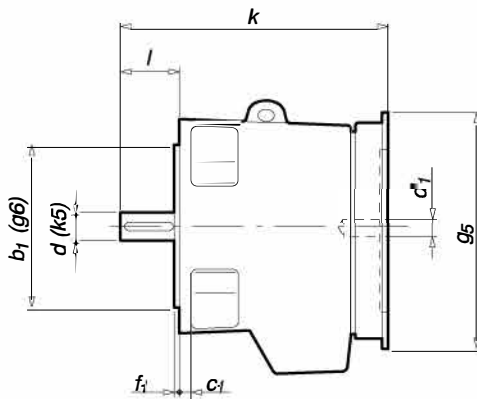
Tipo Typ Type Type	Peso Gew. Weight Poids [Kg]	$d_1$	$g_5$	$k$	$a$	$b$	$c$	$e$	$f$	$h$	$l$	$p_3$	$s$	$d$	$l$
84	5,5	14	160	190	88	78	11	108	120	84	48	143	10	16	34
102	8.5	14	160	181	106	100	13	134	150	102	60	176	9	19	40
128	13	14	160	207	126	118	16	160	178	128	74	215	11	24	50

**"IBC"**  
DIMENSIONES (mm)

**"IBC"**  
ABMESSUNGEN (mm)

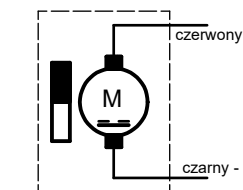
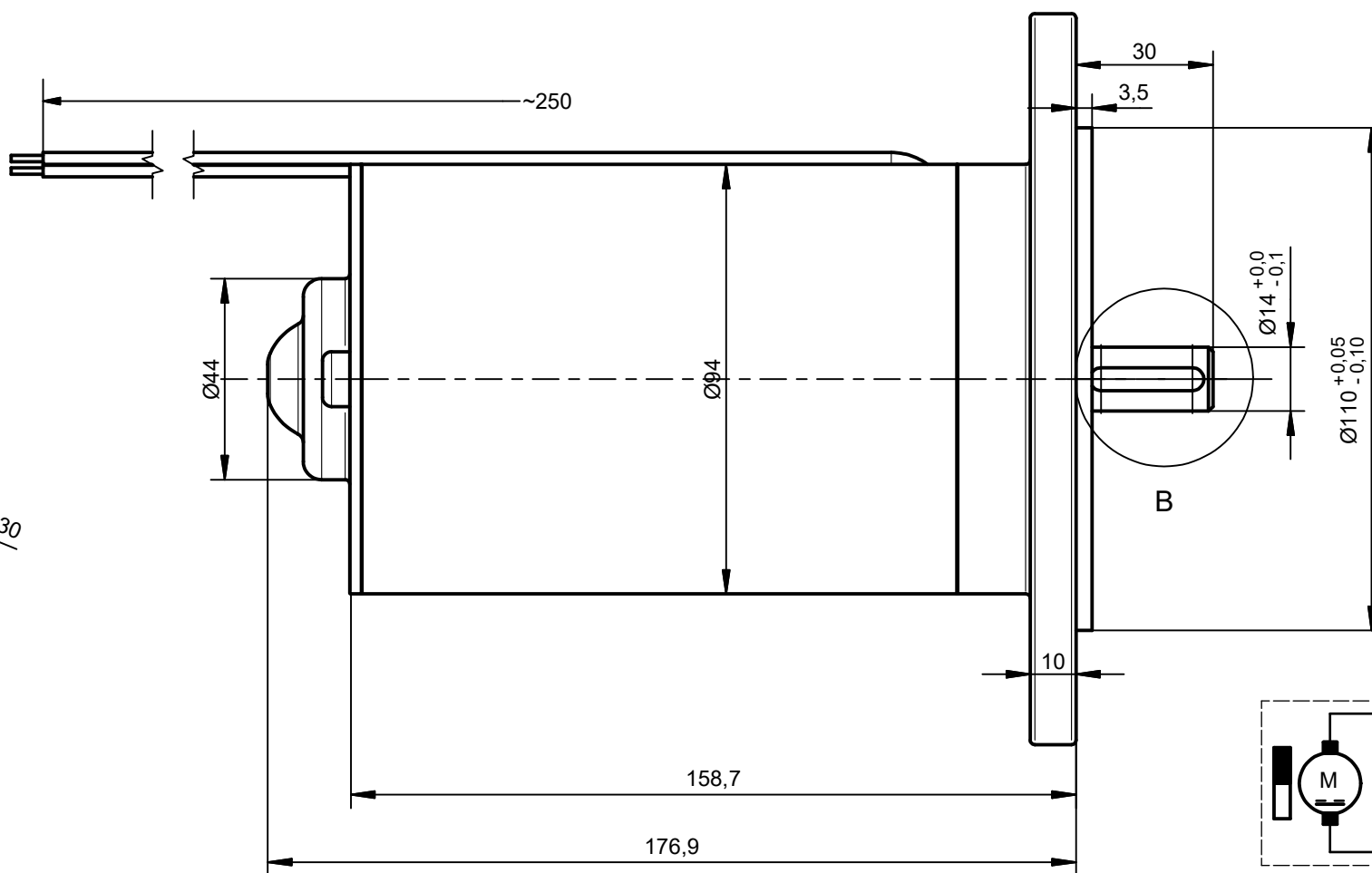
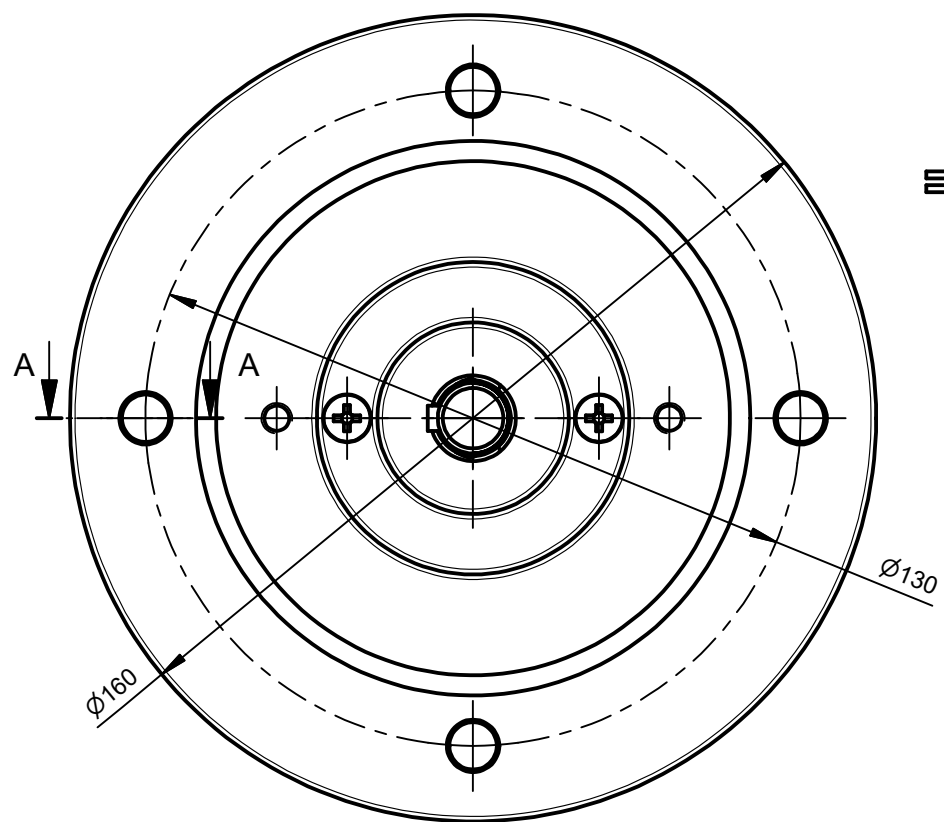
**"IBC"**  
DIMENSIONS (mm)

**"IBC"**  
WYMIARY (mm)

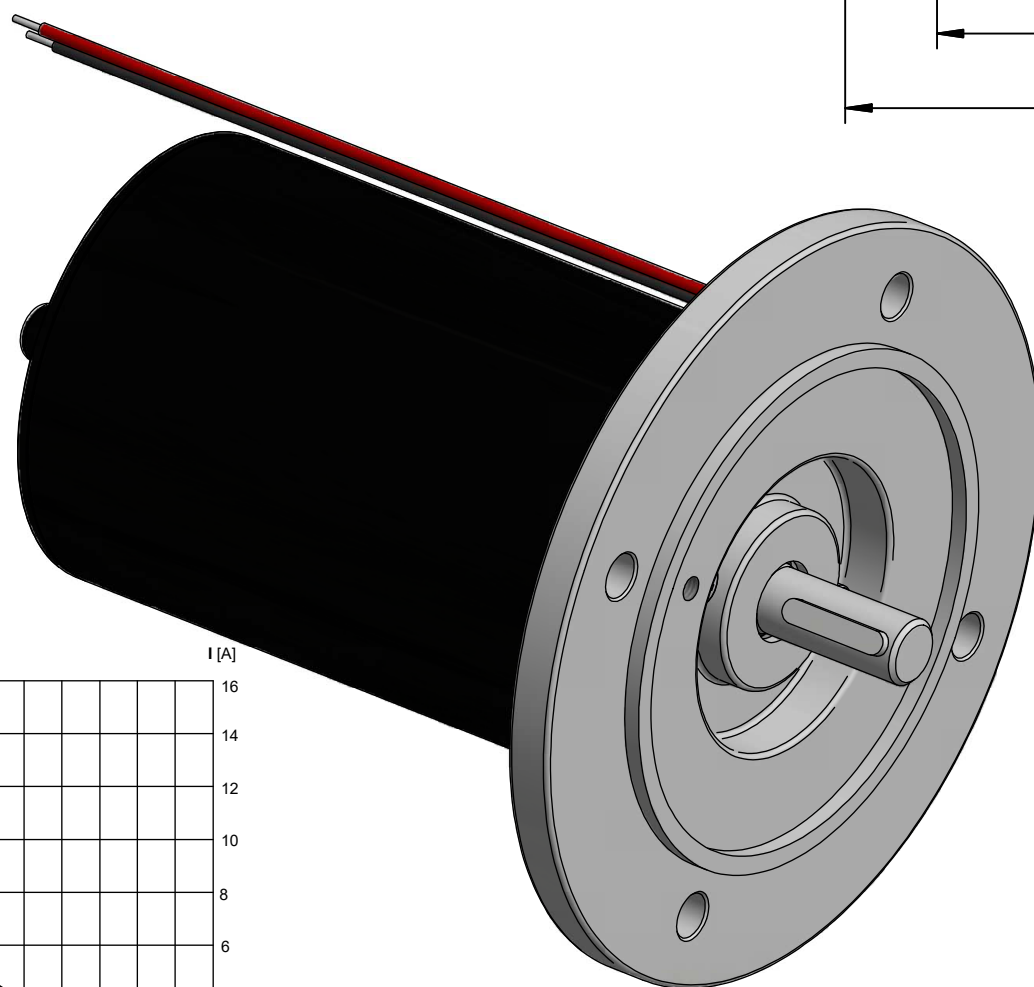
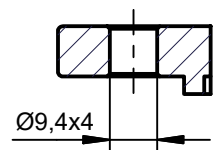


Tipo Typ Type Type	Peso Gew. Weight Ciężar [Kg]	d <sub>1</sub>	g <sub>5</sub>	k	a <sub>1</sub>	b <sub>1</sub>	c <sub>1</sub>	e <sub>1</sub>	f <sub>1</sub>	p	p <sub>3</sub>	s <sub>1</sub>	v <sub>1</sub>	d	l
84	5	14	160	190	110	80	8	100	3	-	55	7	78	16	34
102	8	14	160	181	145	110	10	130	3.5	-	73	9	100	19	40
128	12	14	160	207	172	130	10	165	3.5	-	86	11	128	24	50

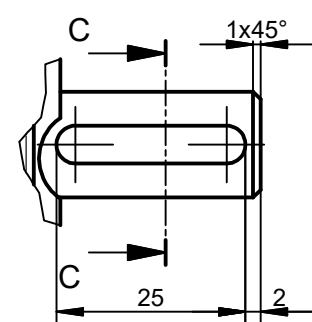
# Silnik DC 24V dla przekładni ślimakowej lub walcowej z kołnierzem IEC B5 160-14



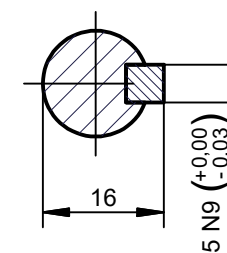
A-A (1 : 1,5)



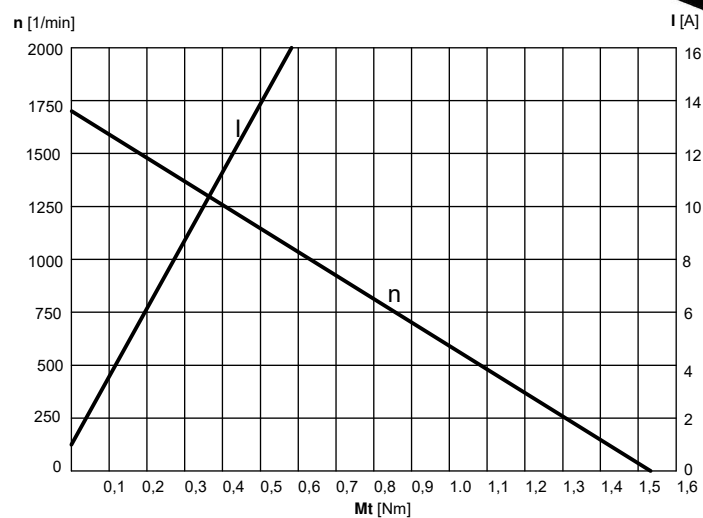
B (1 : 1)




C-C (1 : 1)



1. Napięcie nominalne U=24V
  2. Obroty na biegu luzem 1700 RPM
  3. Prąd biegu luzem 1,2 A
  4. Moment max rozruchowy 1,5 Nm
  5. Prąd znamionowy 9,5 A
  6. IP 55
- Charakter pracy silnika - praca dorywcza S2



n1	1700 obr/min	bieg luzem	Data: 27.04.2020r.	Kontakt do dostawcy : e-mail: <a href="mailto:biuro@technical.pl">biuro@technical.pl</a> ; tel.+48 63 27 25 478	Sheet No.
Moc	220W				1 of 1
Kołnierz	B5	160-14	Format A3	NAME <b>Silnik elektryczny prądu stałego DC 24V</b>	Scale
Prąd	nominalny	~ 9,5A			1 : 1,5
IP 55			PART NO. <b>3XX-27.04.2020</b>	Rev.	
Dostawca:  <b>TECHNICAL</b> GRZEGORZ TĘGOS					Cat.No./ Product
General tolerances: ISO 2768-m					