

DYSTRYBUTOR



**TECHNICAL**

GRZEGORZ TĘGOS

TECHNIKA NAPIĘDU I TRANSMISJI MOCY

62-600 Koło, ul. Toruńska 212  
tel. 0-63/ 27 25 478 / fax. 0-63/ 26 16 258

[www.technical.pl](http://www.technical.pl)  
[biuro@technical.pl](mailto:biuro@technical.pl)

Sklep internetowy  
[www.sklep.technical.pl](http://www.sklep.technical.pl)

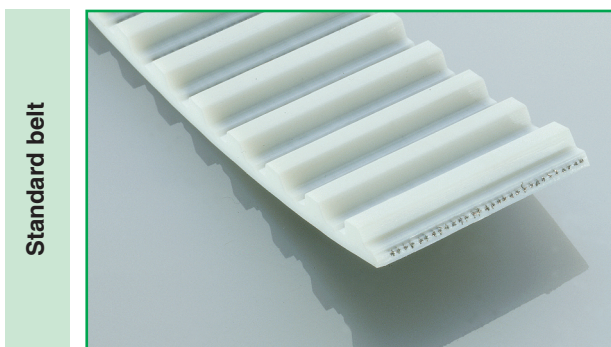
# **Pasy zębate PU z metra podziałka RTD**



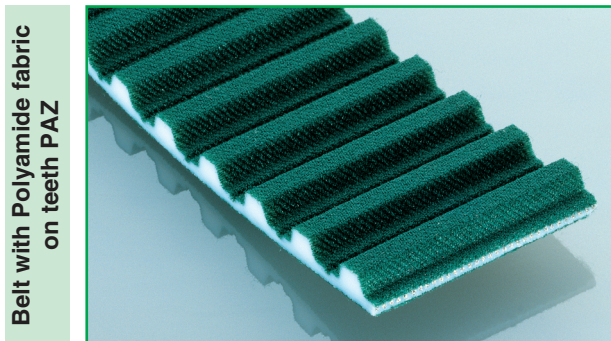
Antriebsselemente

## ELATECH® M and V

The timing belts manufactured by ELATECH® have been designed to comply with every need of the design engineer in linear motion, power transmission and in conveying applications where precise synchronisation is needed. ELATECH® timing belts are manufactured with the body in thermoplastic polyurethane with excellent wear resistance and with high tensile strength steel cords. A special polyamide fabric on the tooth (on request) reduces the coefficient of friction, improves the tooth engagement and reduces noise.



Standard belt



Belt with Polyamide fabric on teeth PAZ

### Product declaration

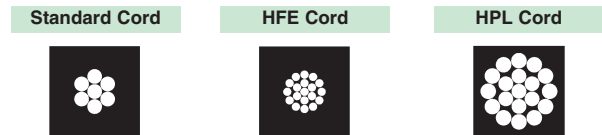
- ELATECH® belts are certified to be according RoHS 2011/65/UE
- On request, it is possible to deliver belts:
  - with antistatic properties according to ISO9563
  - other special certifications available on request

### Colour

The standard colour ELATECH® timing belt is white. On demand it is possible to deliver belts in different colours.

### Tension Cords

In order to maximize the application of ELATECH® timing belts, construction with special cords is available on request:



- **HPL** high performance cords: the cord cross section is increased compared with standard. This results in a lower belt elongation and more precise positioning accuracy.
- **HFE** high Flexibility cords: the cord cross section is spread on a higher number of single filaments. This results in a lower bending stress and therefore in a higher resistance at reverse bending of the cords. They allow using pulleys and idlers up to 30% smaller in diameter compared to standard.
- **INOX** stainless steel cords are suitable for application in aggressive environments. They have lower tensile strength than standard cords.
- **ARAMID**: increases belt flexibility and decreases belt weight.

It is to be noted that steel cords offer the best technical performances and dimensional stability of the belts. Belt length tolerances are valid for steel cord reinforcement. In case of other material (aramid, fibreglass) length tolerance may change.

For application with special cords ask our engineering department.

### Mechanical properties:

- Excellent dimensional stability
- High abrasion resistance
- Low pretension and shaft load
- Maintenance free
- High linear and angular positioning precision
- High efficiency

### Chemical properties:

High resistance to:

- Hydrolysis
- Ozone
- UVA
- Ageing
- Oils, greases and fats
- Gasoline
- Good resistance to acids
- Working temperatures range for standard material -10°C +80°C (peaks up to 110°C).
- For very low temperature special compound material is available on request (see dedicated table)
- Silicon free production

## Executions

### ELATECH® M

They are manufactured in rolls with standard length of 100 m. On request longer or shorter lengths are available. Main applications are linear drives.

#### Ordering example roll 100 m profile T :

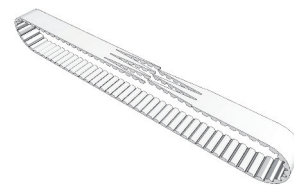
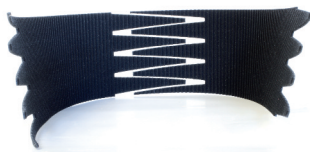
ELATECH® "R" - Roll 100 m	<b>R</b>	<b>025</b>	<b>T</b>	<b>10</b>	<b>A / Z</b>
ELATECH® timing belt type "R"					
Width 25 mm (3 digits)					
Profile "T"					
Pitch 10 mm					
A= steel cords S= inox cords K= Kevlar® cords F= high flexibility cords P= high power cords					
Z= fabric on teeth (PAZ) R= fabric on back (PAR) D= fabric on PAZ + PAR					

#### Ordering example profile H cut to length:

ELATECH® "M" cut to length	<b>M</b>	<b>100</b>	<b>H</b>	<b>A</b>	<b>01000 / Z</b>
ELATECH® timing belt type "M"					
Width (x 0,254 = mm) - 3 digits					
Profile "H"					
A= stainless steel cords S= inox cords K= Kevlar® cords F= high flexibility cords P= high power cords					
Length 1000 mm (5 digits)					
Z= fabric on teeth (PAZ) R= fabric on back (PAR) D= fabric on PAZ + PAR					

### ELATECH® V

They are jointed belts manufactured from open-end ELATECH® belts. Thanks to the specific manufacturing process, any length may be obtained tooth by tooth. Free combinations with special backing materials and welded profiles, make ELATECH® V belts ideal in synchronized conveying and highly specialised applications.



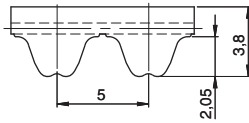
#### Ordering example profile AT :

ELATECH® "V" jointed	<b>V</b>	<b>020</b>	<b>AT5</b>	<b>A</b>	<b>03410 / Z</b>
ELATECH timing belt type "V" jointed					
Width 20 mm (3 digits)					
Profile "AT" - Pitch 5 mm					
A= stainless steel cords S= inox cords K= Kevlar® cords F= high flexibility cords P= high power cords					
Length 3410 mm (5 digits)					
Z= fabric on teeth (PAZ) R= fabric on back (PAR) D= fabric on PAZ + PAR					

#### Ordering example profile XL :

ELATECH® "V" jointed	<b>V</b>	<b>150</b>	<b>XL</b>	<b>A</b>	<b>00750 / Z</b>
ELATECH timing belt type "V" jointed					
Width (x 0,254 = mm) - 3 digits					
Profile "XL"					
A= stainless steel cords S= inox cords K= Kevlar® cords F= high flexibility cords P= high power cords					
Length 750 mm (5 digits)					
Z= fabric on teeth (PAZ) R= fabric on back (PAR) D= fabric on PAZ + PAR					

# RTD 5M



### Belt characteristics

- Polyurethane timing belt with round tooth profile and high tensile load tension cords.
- Tooth profile according to ISO 13050
- Metric pitch 5 mm
- The round tooth profile allows a uniform load distribution that guarantees high performances, high transmissible torque and precise tooth engagement
- PAZ fabric on tooth side delivered as standard reduces noise in the drive
- Widely used in linear positioning, light power transmission applications

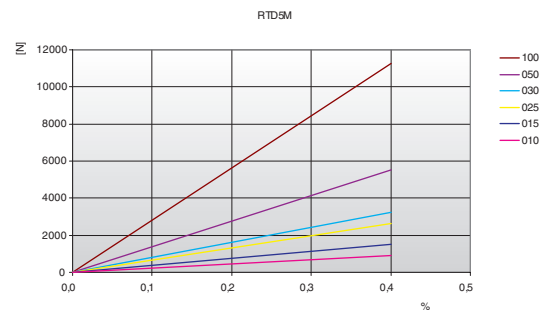
- Width tolerance:  $\pm 0,5$  [mm]
- Length tolerance:  $\pm 0,5$  [mm/m]
- Thickness tolerance:  $\pm 0,2$  [mm]

## Technical Data

Belt width b [mm]	Allowable tensile load Type M $F_{Tzul}$ [N]	Allowable tensile load Type V $F_{Tzul}$ [N]	Breaking load Type M $F_{Br}$ [N]	Specific spring rate $C_{spez}$ [N]	Weight [kg/m]
10	920	460	3360	230000	0,05
15	1500	750	5460	375000	0,07
25	2650	1325	9660	662500	0,12
30	3220	1610	11760	805000	0,15
50	5520	2760	20160	1380000	0,23
100	11270	5635	41160	2817500	0,46

Other widths are available on request.

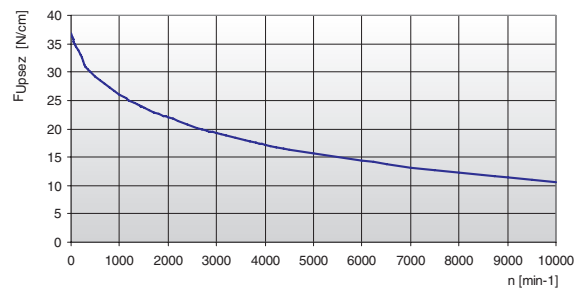
### Load / Elongation [ % ]



### Tooth shear strength

rpm	$F_{Uspez}$ [N/cm]	rpm	$F_{Uspez}$ [N/cm]	rpm	$F_{Uspez}$ [N/cm]	rpm	$F_{Uspez}$ [N/cm]
0	37,80	900	28,61	2200	23,30	5500	16,95
20	37,25	1000	28,05	2400	22,72	6000	16,32
40	36,75	1100	27,52	2600	22,19	6500	15,74
60	36,30	1200	27,03	2800	21,69	7000	15,19
80	35,89	1300	26,56	2880	21,50	7500	14,68
100	35,52	1400	26,13	3000	21,23	8000	14,20
200	34,13	1440	25,96	3200	20,78	8500	13,75
300	32,87	1500	25,71	3400	20,37	9000	13,33
400	32,10	1600	25,32	3600	19,97	9500	12,92
500	31,31	1700	24,94	3800	19,59	10000	12,53
600	30,56	1800	24,58	4000	19,23	-	-
700	29,86	1900	24,24	4500	18,40	-	-
800	29,21	2000	23,91	5000	17,64	-	-

### Tooth shear strength / rpm



The specific load  $F_{Uspez}$  is the maximum load which one single belt tooth 1 cm wide can withstand in all operating conditions.

This force is related to the drive rpm.

The total load  $F_u$  transmissible by the belt in the drive is calculated by:

$$F_u [N] = F_{Uspez} \cdot Z_e \cdot b$$

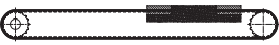
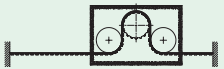
- $F_u$  [N] = peripheral force
- $F_{Uspez}$  [N/cm] = specific load
- $Z_e$  = number of teeth in mesh in the small pulley
- $Z_{emax}$  = max. no of teeth in mesh to be considered for the calculation of the drive
- $Z_{emax}$  = 12 for ELATECH® M
- $Z_{emax}$  = 6 for ELATECH® V
- $b$  [cm] = belt width in cm

# RTD 5M

## Specialties

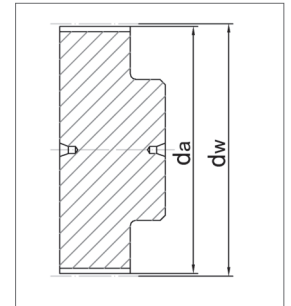
Belt width b [mm]	ARAMID CORD		STAINLESS STEEL		HFE High Flexibility	
	F <sub>Tzul</sub> [N] M type	F <sub>Br</sub> [N]	F <sub>Tzul</sub> [N] M type	F <sub>Br</sub> [N]	F <sub>Tzul</sub> [N] M type	F <sub>Br</sub> [N]
10	880	3600	600	2400	960	3440
15	1430	5850	1730	3900	1560	5590
25	2530	10350	2100	6900	2760	9890
30	3080	12600	2100	8400	3360	12040
50	5280	21600	3600	14400	5760	20640
100	10780	44100	-	-	-	-

## Flexibility

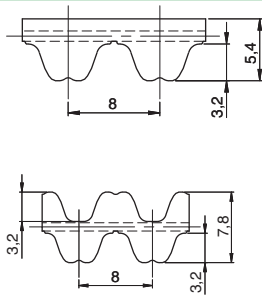
Minimum pulley number of teeth and minimum idler diameter		Type of cord			
		STANDARD	ARAMID	STAINLESS	HFE
Drive without reverse bending 	Timing pulley z <sub>min</sub>	16	16	18	15
	Flat idler running on belt teeth d <sub>min</sub>	30 mm	30 mm	40 mm	25 mm
Drive with reverse bending 	Timing pulley z <sub>min</sub>	25	25	25	20
	Flat idler running on belt back d <sub>min</sub>	60 mm	60 mm	65 mm	60 mm

## Timing pulleys

z	da	dw	z	da	dw	z	da	dw	z	da	dw
10	14,77	15,91	40	62,52	63,66	70	110,27	111,41	100	158,01	159,15
11	16,36	17,50	41	64,11	65,25	71	111,86	113,00	101	159,61	160,75
12	17,96	19,10	42	65,70	66,84	72	113,45	114,59	102	161,20	162,34
13	19,55	20,69	43	67,29	68,43	73	115,04	116,18	103	162,81	163,95
14	21,14	22,28	44	68,88	70,02	74	116,63	117,77	104	164,38	165,52
15	22,73	23,87	45	70,47	71,61	75	118,22	119,36	105	165,97	167,11
16	24,32	25,46	46	72,06	73,20	76	119,81	120,95	106	167,56	168,70
17	25,91	27,05	47	73,65	74,79	77	121,40	122,54	107	169,09	170,23
18	27,51	28,65	48	75,24	76,38	78	122,99	124,13	108	170,75	171,89
19	29,09	30,23	49	76,84	77,98	79	124,58	125,72	109	172,34	173,48
20	30,69	31,83	50	78,44	79,58	80	126,18	127,32	110	173,93	175,07
21	32,28	33,42	51	80,03	81,17	81	127,77	128,91	111	175,52	176,66
22	33,87	35,01	52	81,62	82,76	82	129,36	130,50	112	177,11	178,25
23	35,46	36,60	53	83,21	84,35	83	130,95	132,09	113	178,70	179,84
24	37,06	38,20	54	84,80	85,94	84	132,54	133,68	114	180,29	181,43
25	38,64	39,78	55	86,39	87,53	85	134,14	135,28	115	181,88	183,02
26	40,24	41,38	56	87,98	89,12	86	135,73	136,87	116	183,47	184,61
27	41,83	42,97	57	89,57	90,71	87	137,32	138,46	117	185,07	186,21
28	43,42	44,56	58	91,17	92,31	88	138,91	140,05	118	186,66	187,80
29	45,01	46,15	59	92,76	93,90	89	140,51	141,65	119	188,25	189,39
30	46,61	47,75	60	94,35	95,49	90	142,10	143,24	120	189,84	190,98
31	48,19	49,33	61	95,94	97,08	91	143,69	144,83			
32	49,79	50,93	62	97,53	98,67	92	145,28	146,42			
33	51,38	52,52	63	99,12	100,26	93	146,87	148,01			
34	52,97	54,11	64	100,72	101,86	94	148,46	149,60			
35	54,56	55,70	65	102,31	103,45	95	150,06	151,20			
36	56,16	57,30	66	103,90	105,04	96	151,64	152,78			
37	57,75	58,89	67	105,49	106,63	97	153,24	154,38			
38	59,34	60,48	68	107,08	108,22	98	154,83	155,97			
39	60,93	62,07	69	108,67	109,81	99	156,42	157,56			



# RTD 8M



### Belt characteristics

- Polyurethane timing belt with round tooth profile and high tensile load tension cords.
- Tooth profile according to ISO 13050
- Metric pitch 8 mm
- The round tooth profile allows a uniform load distribution that guarantees high performances, high transmissible torque and precise tooth engagement
- PAZ fabric on tooth side delivered as standard reduces noise in the drive
- Widely used in linear positioning, medium power transmission applications

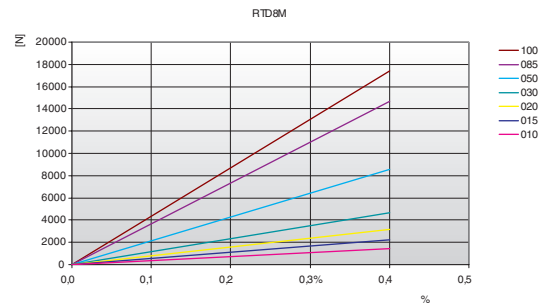
- Width tolerance: ±0,5 [mm]
- Length tolerance: ±0,5 [mm/m]
- Thickness tolerance: ±0,2 [mm]

## Technical Data

Belt width b [mm]	Allowable tensile load Type M F <sub>Tzul</sub> [N]	Allowable tensile load Type V F <sub>Tzul</sub> [N]	Breaking load Type M F <sub>Br</sub> [N]	Specific spring rate C <sub>spez</sub> [N]	Weight [kg/m]
10	1470	735	5700	367500	0,07
15	2210	1105	8550	552500	0,10
20	3190	1595	12350	797500	0,14
30	4660	2330	18050	1165000	0,20
50	8580	4290	33250	2145000	0,35
85	14700	7350	57000	3675000	0,60
100	17400	8700	67450	4350000	0,75

Other widths are available on request.

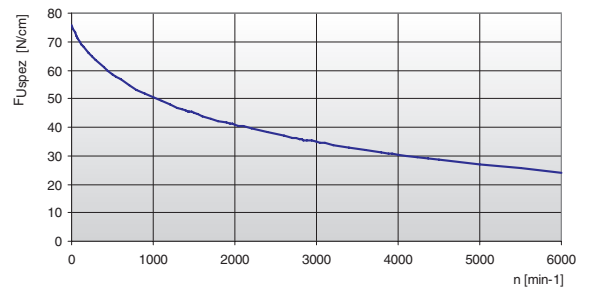
### Load / Elongation [ % ]



### Tooth shear strength

rpm	F <sub>Uspez</sub> [N/cm]	rpm	F <sub>Uspez</sub> [N/cm]	rpm	F <sub>Uspez</sub> [N/cm]	rpm	F <sub>Uspez</sub> [N/cm]
0	76,00	800	53,20	1900	41,52	4000	30,44
20	74,62	900	51,71	2000	40,78	4500	28,63
40	73,34	1000	50,35	2200	39,39	5000	27,00
60	72,16	1100	49,09	2400	38,12	5500	25,51
80	71,07	1200	47,93	2600	36,94	6000	24,15
100	70,07	1300	46,84	2800	35,83	-	-
200	66,09	1400	45,82	2880	35,41	-	-
300	63,68	1440	45,43	3000	34,80	-	-
400	61,03	1500	44,86	3200	33,83	-	-
500	58,71	1600	43,96	3400	32,91	-	-
600	56,66	1700	43,10	3600	32,05	-	-
700	54,84	1800	42,29	3800	31,22	-	-

### Tooth shear strength / rpm



The specific load F<sub>Uspez</sub> is the maximum load which one single belt tooth 1 cm wide can withstand in all operating conditions.

This force is related to the drive rpm.

The total load F<sub>u</sub> transmissible by the belt in the drive is calculated by:

$$F_u [N] = F_{Uspez} \cdot Z_e \cdot b$$

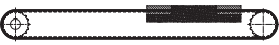
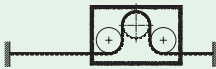
- F<sub>u</sub> [N] = peripheral force
- F<sub>Uspez</sub> [N/cm] = specific load
- Z<sub>e</sub> = number of teeth in mesh in the small pulley
- Z<sub>e,max</sub> = max. no of teeth in mesh to be considered for the calculation of the drive
- Z<sub>e,max</sub> = 12 for ELATECH® M
- Z<sub>e,max</sub> = 6 for ELATECH® V
- b [cm] = belt width in cm

# RTD 8M

## Specialties

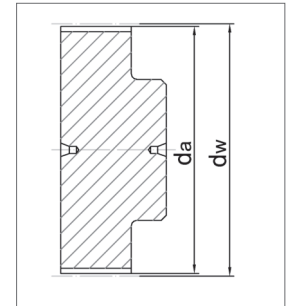
Belt width b [mm]	ARAMID CORD		STAINLESS STEEL		HPL High Performance	
	F <sub>Tzul</sub> [N] M type	F <sub>Br</sub> [N]	F <sub>Tzul</sub> [N] M type	F <sub>Br</sub> [N]	F <sub>Tzul</sub> [N] M type	F <sub>Br</sub> [N]
10	1140	4740	1080	4500	-	-
15	1710	7110	1620	6750	-	-
20	2470	10270	2340	9750	5280	19250
30	3800	15800	3600	15000	8160	29750
50	6650	27650	6300	26250	14400	52500
85	11400	47400	10800	45000	24480	89250
100	13500	56000	12780	53250	29280	106750

## Flexibility

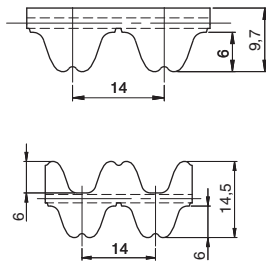
Minimum pulley number of teeth and minimum idler diameter		Type of cord			
		STANDARD	ARAMID	STAINLESS	HPL
Drive without reverse bending 	Timing pulley z <sub>min</sub>	18	18	24	30
	Flat idler running on belt teeth d <sub>min</sub>	50 mm	50 mm	70 mm	80 mm
Drive with reverse bending 	Timing pulley z <sub>min</sub>	30	30	40	30
	Flat idler running on belt back d <sub>min</sub>	120 mm	120 mm	120 mm	150 mm

## Timing pulleys

z	da	dw	z	da	dw	z	da	dw	z	da	dw
18	44,46	45,83	48	120,86	122,23	78	197,25	198,62	108	273,64	275,01
19	47,01	48,38	49	123,40	124,77	79	199,80	201,17	109	276,19	277,56
20	49,56	50,93	50	125,95	127,32	80	202,35	203,72	110	278,74	280,11
21	52,10	53,47	51	128,50	129,87	81	204,89	206,26	111	281,29	282,66
22	54,65	56,02	52	131,05	132,41	82	207,44	208,81	112	283,84	285,21
23	57,20	58,57	53	133,59	134,96	83	209,98	211,35	113	286,38	287,75
24	59,75	61,12	54	136,14	137,51	84	212,53	213,90	114	288,93	290,30
25	62,29	63,66	55	138,68	140,05	85	215,08	216,45	115	291,47	292,84
26	64,84	66,21	56	141,23	142,60	86	217,63	219,00	116	294,02	295,39
27	67,38	68,75	57	143,78	145,15	87	220,17	221,54	117	296,57	297,94
28	70,08	71,30	58	146,32	147,69	88	222,72	224,09	118	299,11	300,48
29	72,59	73,84	59	148,87	150,24	89	225,26	226,63	119	301,66	303,03
30	75,13	76,39	60	151,42	152,79	90	227,81	229,18	120	304,20	305,57
31	77,65	78,94	61	153,96	155,33	91	230,35	231,72			
32	80,16	81,49	62	156,52	157,89	92	232,90	234,27			
33	82,68	84,03	63	159,06	160,43	93	235,45	236,82			
34	85,21	86,58	64	161,60	162,97	94	238,00	239,37			
35	87,76	89,12	65	164,15	165,52	95	240,54	241,91			
36	90,30	91,67	66	166,69	168,06	96	243,09	244,46			
37	92,85	94,22	67	169,24	170,61	97	245,63	247,00			
38	95,40	96,77	68	171,79	173,16	98	248,18	249,55			
39	97,94	99,31	69	174,33	175,70	99	250,73	252,10			
40	100,49	101,86	70	176,88	178,25	100	253,28	254,67			
41	103,04	104,40	71	179,43	180,80	101	255,82	257,19			
42	105,58	106,95	72	181,98	183,35	102	258,37	259,74			
43	108,13	109,50	73	184,52	185,89	103	260,91	262,28			
44	110,68	112,05	74	187,07	188,44	104	263,46	264,83			
45	113,22	114,59	75	189,61	190,98	105	266,01	267,38			
46	115,77	117,14	76	192,16	193,53	106	268,55	269,92			
47	118,31	119,68	77	194,71	196,08	107	271,10	272,47			



# RTD 14M



### Belt characteristics

- Polyurethane timing belt with round tooth profile and high tensile load tension cords.
- Tooth profile according to ISO 13050
- Metric pitch 14 mm
- The round tooth profile allows a uniform load distribution that guarantees high performances, high transmissible torque and precise tooth engagement
- PAZ fabric on tooth side delivered as standard reduces noise in the drive
- Widely used in linear positioning, heavy power transmission applications

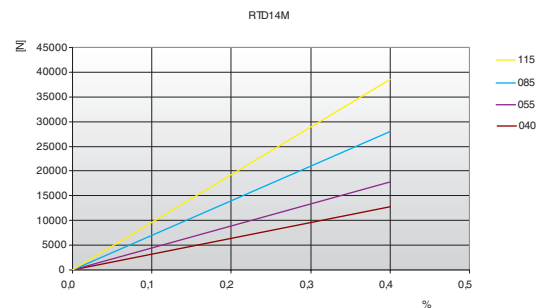
- Width tolerance:  $\pm 1,0$  [mm]
- Length tolerance:  $\pm 0,5$  [mm/m]
- Thickness tolerance:  $\pm 0,4$  [mm]

## Technical Data

Belt width b [mm]	Allowable tensile load Type M $F_{Tzul}$ [N]	Allowable tensile load Type V $F_{Tzul}$ [N]	Breaking load Type M $F_{Br}$ [N]	Specific spring rate $C_{spez}$ [N]	Weight [kg/m]
40	12750	6375	48000	3187500	0,48
55	17850	8925	67200	4462500	0,68
85	28050	14025	105600	7012500	1,00
115	39100	19550	147200	9775000	1,40

Other widths are available on request.

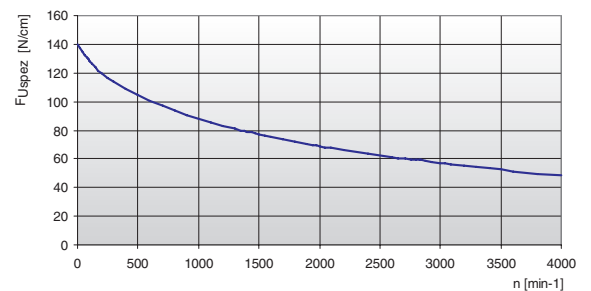
### Load / Elongation [ % ]



## Tooth shear strength

rpm	$F_{Uspez}$ [N/cm]	rpm	$F_{Uspez}$ [N/cm]	rpm	$F_{Uspez}$ [N/cm]	rpm	$F_{Uspez}$ [N/cm]
0	140,00	800	93,80	1900	70,49	4000	48,24
20	137,31	900	90,85	2000	69,01	-	-
40	134,83	1000	88,14	2200	66,23	-	-
60	132,53	1100	85,63	2400	63,68	-	-
80	130,42	1200	83,31	2600	61,30	-	-
100	128,46	1300	81,14	2800	59,09	-	-
200	119,77	1400	79,11	2880	58,24	-	-
300	114,29	1440	78,33	3000	57,01	-	-
400	109,19	1500	77,19	3200	55,06	-	-
500	104,65	1600	75,38	3400	53,22	-	-
600	100,64	1700	73,67	3600	51,48	-	-
700	97,04	1800	72,04	3800	49,82	-	-

### Tooth shear strength / rpm



The specific load  $F_{Uspez}$  is the maximum load which one single belt tooth 1 cm wide can withstand in all operating conditions.

This force is related to the drive rpm.

The total load  $F_u$  transmissible by the belt in the drive is calculated by:

$$F_u [N] = F_{Uspez} \cdot Z_e \cdot b$$

- $F_u [N]$  = peripheral force
- $F_{Uspez} [N/cm]$  = specific load
- $Z_e$  = number of teeth in mesh in the small pulley
- $Z_{emax}$  = max. no of teeth in mesh to be considered for the calculation of the drive
- $Z_{emax}$  = 12 for ELATECH® M
- $Z_{emax}$  = 6 for ELATECH® V
- $b [cm]$  = belt width in cm


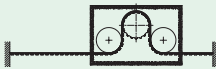


# RTD 14M

## Specialties

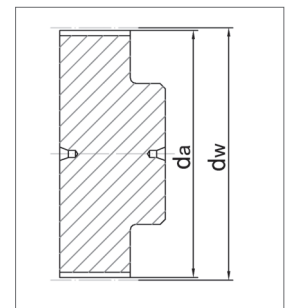
Belt width b [mm]	HPL High Performance	
	$F_{Tzul}$ [N] M type	$F_{Br}$ [N]
40	14300	58500
55	19800	81000
75	27500	112500
85	30800	126000
100	35200	144000
115	41800	171000
150	55000	225000

## Flexibility

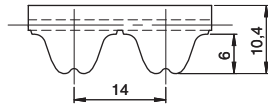
Minimum pulley number of teeth and minimum idler diameter		Type of cord	
		STANDARD	HPL
Drive without reverse bending 	Timing pulley $z_{min}$	32	32
	Flat idler running on belt teeth $d_{min}$	140 mm	140 mm
Drive with reverse bending 	Timing pulley $z_{min}$	32	32
	Flat idler running on belt back $d_{min}$	200 mm	200 mm

## Timing pulleys

z	da	dw	z	da	dw	z	da	dw	z	da	dw
28	122,12	124,77	58	255,68	258,46	88	389,37	392,15	119	527,51	530,30
29	126,58	129,22	59	260,14	262,91	89	393,83	396,60	120	531,97	534,75
30	130,99	133,69	60	264,60	267,38	90	398,29	401,07			
31	135,45	138,14	61	269,04	271,83	91	402,73	405,52			
32	139,88	142,59	62	273,50	276,28	92	407,19	409,97			
33	144,35	147,06	63	277,96	280,75	93	411,65	414,44			
34	148,79	151,51	64	282,42	285,20	94	416,10	418,89			
35	153,25	155,96	65	286,88	289,65	95	420,56	423,35			
36	157,68	160,41	66	291,32	294,11	96	425,02	427,80			
37	162,14	164,88	67	295,78	298,56	97	429,48	432,25			
38	166,60	169,34	68	300,24	303,03	98	433,94	436,72			
39	171,02	173,79	69	304,70	307,48	99	438,38	441,17			
40	175,48	178,24	70	309,16	311,93	100	442,84	445,62			
41	179,92	182,71	71	313,61	316,40	101	447,30	450,09			
42	184,37	187,16	72	318,07	320,85	102	451,76	454,54			
43	188,83	191,61	73	322,53	325,30	103	456,21	459,00			
44	193,29	196,08	74	326,98	329,77	104	460,67	463,45			
45	197,75	200,53	75	331,44	334,22	105	465,13	467,90			
46	202,21	204,98	76	335,90	338,67	106	469,58	472,37			
47	206,65	209,43	77	340,34	343,12	107	474,03	476,82			
48	211,11	213,90	78	344,80	347,59	108	478,49	481,28			
49	215,57	218,35	79	349,26	352,04	109	482,95	485,74			
50	220,03	222,80	80	353,72	356,49	110	487,41	490,19			
51	224,49	227,27	81	358,17	360,96	111	491,87	494,64			
52	228,95	231,72	82	362,63	365,41	112	496,32	499,10			
53	233,39	236,18	83	367,09	369,86	113	500,78	503,55			
54	237,85	240,64	84	371,54	374,33	114	505,23	508,02			
55	242,30	245,09	85	376,00	378,78	116	514,14	516,93			
56	246,76	249,55	86	380,46	383,23	117	518,60	521,38			
57	251,22	254,01	87	384,91	387,70	118	523,06	525,83			



# RTD 14M XHPL



### Belt characteristics

- Polyurethane timing belt with round tooth profile and high tensile load tension cords.
- Tooth profile according to ISO 13050
- Metric pitch 14 mm
- The round tooth profile allows a uniform load distribution that guarantees high performances, high transmissible torque and precise tooth engagement
- PAZ fabric on tooth side delivered as standard reduces noise in the drive
- **RTD14M - XHPL is the ideal belt for heavy duty synchronous lifting applications. Black colour as standard.**

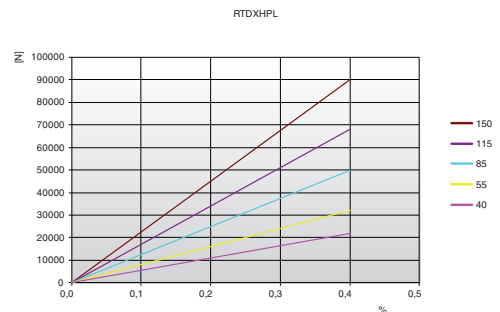
- Width tolerance:  $\pm 1,0$  [mm]
- Length tolerance:  $\pm 0,5$  [mm/m]
- Thickness tolerance:  $\pm 0,4$  [mm]

## Technical Data

Belt width b [mm]	Allowable tensile load Type M $F_{Tzul}$ [N]	Breaking load Type M $F_{Br}$ [N]	Specific spring rate $C_{spez}$ [N]	Weight [kg/m]
40	22000	77000	5500000	0,59
55	32000	112000	8000000	0,75
85	50000	175000	12500000	1,29
115	68000	238000	17000000	1,75
150	90000	315000	22500000	2,21

Other widths are available on request.

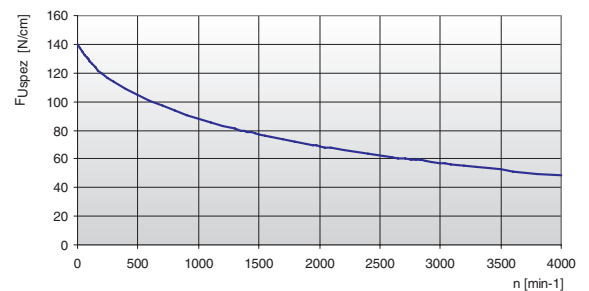
Load / Elongation [ % ]



### Tooth shear strength

rpm	$F_{Uspez}$ [N/cm]	rpm	$F_{Uspez}$ [N/cm]	rpm	$F_{Uspez}$ [N/cm]	rpm	$F_{Uspez}$ [N/cm]
0	140,00	800	93,80	1900	70,49	4000	48,24
20	137,31	900	90,85	2000	69,01	-	-
40	134,83	1000	88,14	2200	66,23	-	-
60	132,53	1100	85,63	2400	63,68	-	-
80	130,42	1200	83,31	2600	61,30	-	-
100	128,46	1300	81,14	2800	59,09	-	-
200	119,77	1400	79,11	2880	58,24	-	-
300	114,29	1440	78,33	3000	57,01	-	-
400	109,19	1500	77,19	3200	55,06	-	-
500	104,65	1600	75,38	3400	53,22	-	-
600	100,64	1700	73,67	3600	51,48	-	-
700	97,04	1800	72,04	3800	49,82	-	-

Tooth shear strength / rpm



The specific load  $F_{Uspez}$  is the maximum load which one single belt tooth 1 cm wide can withstand in all operating conditions. This force is related to the drive rpm.

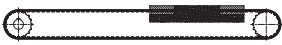
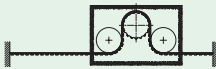
The total load  $F_u$  transmissible by the belt in the drive is calculated by:

$$F_u [N] = F_{Uspez} \cdot Z_e \cdot b$$

- $F_u [N]$  = peripheral force
- $F_{Uspez} [N/cm]$  = specific load
- $Z_e$  = number of teeth in mesh in the small pulley
- $Z_{emax}$  = max. no of teeth in mesh to be considered for the calculation of the drive
- $Z_{emax}$  = 12 for ELATECH® M
- $Z_{emax}$  = 6 for ELATECH® V
- $b [cm]$  = belt width in cm

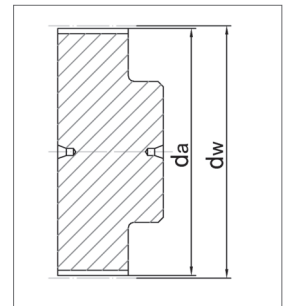
# RTD 14M XHPL

## Flexibility

Minimum pulley number of teeth and minimum idler diameter		Type of cord
		STANDARD
Drive without reverse bending 	Timing pulley $z_{min}$	34
	Flat idler running on belt teeth $d_{min}$	140 mm
Drive with reverse bending 	Timing pulley $z_{min}$	34
	Flat idler running on belt back $d_{min}$	250 mm

## Timing pulleys

z	da	dw	z	da	dw	z	da	dw	z	da	dw
28	122,12	124,77	58	255,68	258,46	88	389,37	392,15	119	527,51	530,30
29	126,58	129,22	59	260,14	262,91	89	393,83	396,60	120	531,97	534,75
30	130,99	133,69	60	264,60	267,38	90	398,29	401,07			
31	135,45	138,14	61	269,04	271,83	91	402,73	405,52			
32	139,88	142,59	62	273,50	276,28	92	407,19	409,97			
33	144,35	147,06	63	277,96	280,75	93	411,65	414,44			
34	148,79	151,51	64	282,42	285,20	94	416,10	418,89			
35	153,25	155,96	65	286,88	289,65	95	420,56	423,35			
36	157,68	160,41	66	291,32	294,11	96	425,02	427,80			
37	162,14	164,88	67	295,78	298,56	97	429,48	432,25			
38	166,60	169,34	68	300,24	303,03	98	433,94	436,72			
39	171,02	173,79	69	304,70	307,48	99	438,38	441,17			
40	175,48	178,24	70	309,16	311,93	100	442,84	445,62			
41	179,92	182,71	71	313,61	316,40	101	447,30	450,09			
42	184,37	187,16	72	318,07	320,85	102	451,76	454,54			
43	188,83	191,61	73	322,53	325,30	103	456,21	459,00			
44	193,29	196,08	74	326,98	329,77	104	460,67	463,45			
45	197,75	200,53	75	331,44	334,22	105	465,13	467,90			
46	202,21	204,98	76	335,90	338,67	106	469,58	472,37			
47	206,65	209,43	77	340,34	343,12	107	474,03	476,82			
48	211,11	213,90	78	344,80	347,59	108	478,49	481,28			
49	215,57	218,35	79	349,26	352,04	109	482,95	485,74			
50	220,03	222,80	80	353,72	356,49	110	487,41	490,19			
51	224,49	227,27	81	358,17	360,96	111	491,87	494,64			
52	228,95	231,72	82	362,63	365,41	112	496,32	499,10			
53	233,39	236,18	83	367,09	369,86	113	500,78	503,55			
54	237,85	240,64	84	371,54	374,33	114	505,23	508,02			
55	242,30	245,09	85	376,00	378,78	116	514,14	516,93			
56	246,76	249,55	86	380,46	383,23	117	518,60	521,38			
57	251,22	254,01	87	384,91	387,70	118	523,06	525,83			



### Note

Special pulley profile required.  
Contact ELATECH Technical Dept. for details.