

DYSTRYBUTOR



TECHNICAL

GRZEGORZ TĘGOS

TECHNIKA NAPĘDU I TRANSMISJI MOCY

62-600 Koło, ul. Toruńska 212
tel. 0-63/ 27 25 478 / fax. 0-63/ 26 16 258

www.technical.pl
biuro@technical.pl

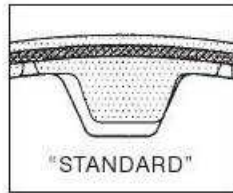
Sklep internetowy
www.sklep.technical.pl

**Koła pasowe zębate
metryczne
T2,5; T5; T10;
AT5; AT10**

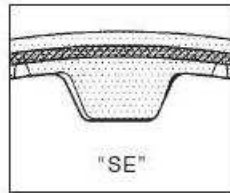


Antriebsselemente

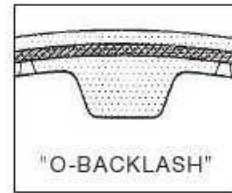
STANDARD METRIC PITCH TIMING PULLEYS
POULIES DENTEES DE SERIE AVEC PAS METRIQUE
STANDARD-ZAHNSCHEIBEN MIT METRISCHE TEILUNG
POLEAS DENTADAS DE SERIE CON PASO METRICO



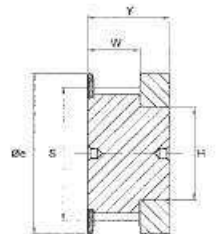
Z > 20



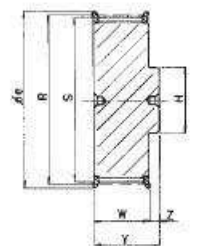
Z < 20



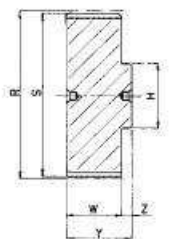
on request



1



2



3

Pitch - Pas
 Tellung - Paso **T2,5** (6 mm)

mm

code code Code código	teeth dents Zähne dientes	type type Typ tipo	S	Øe	H	W	Y	material material Werkstoff material
16 T2.5/12	12	1	9,00	12,0	6,5	9	16	
16 T2.5/14	14	1	10,60	16,0	8,5	9	16	
16 T2.5/15	15	1	11,40	16,0	10	9	16	
16 T2.5/16	16	2	12,20	18,0	9	10	16	
16 T2.5/18	18	2	13,80	18,0	9	10	16	
16 T2.5/19	19	2	14,60	21,5	9	10	16	
16 T2.5/20	20	2	15,40	20,0	11	10	16	Aluminium
16 T2.5/22	22	2	17,00	20,0	11	10	16	Aluminium
16 T2.5/24	24	2	18,55	23,0	12	10	16	Aluminium
16 T2.5/25	25	2	19,35	24,0	13	10	16	Aluminium
16 T2.5/26	26	2	20,15	24,0	14	10	16	Aluminio
16 T2.5/28	28	2	21,75	27,0	14	10	16	
16 T2.5/30	30	2	23,35	27,0	16	10	16	
16 T2.5/32	32	2	24,95	30,0	16	10	16	
16 T2.5/36	36	2	28,10	33,0	20	10	16	
16 T2.5/40	40	2	31,30	36,0	22	10	16	
16 T2.5/44	44	2	34,50	40,0	24	10	16	
16 T2.5/48	48	3	37,70	-	28	10	16	
16 T2.5/60	60	3	47,25	-	34	10	16	



Pitch - Pas
Teilung - Paso **T5** (10 mm)

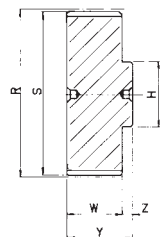
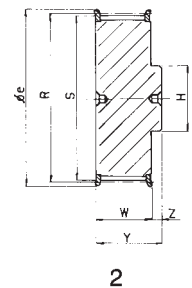
mm

code code Code código	teeth dents Zähne dientes	type type Typ tipo	S	Øe	H	W	Y	material materiel Werkstoff material
21 T5/10	10	2	15,05	18	8	15	21	Aluminium
21 T5/12	12	2	18,25	23	11	15	21	
21 T5/14	14	2	21,45	24	14	15	21	
21 T5/15	15	2	23,05	27	16	15	21	
21 T5/16	16	2	24,60	30	18	15	21	
21 T5/18	18	2	27,80	30	20	15	21	
21 T5/19	19	2	29,40	33	22	15	21	
21 T5/20	20	2	31,00	33	23	15	21	
21 T5/22	22	2	34,25	36	24	15	21	
21 T5/24	24	2	37,40	40	26	15	21	
21 T5/25	25	2	39,00	46	26	15	21	
21 T5/26	26	2	40,60	46	26	15	21	
21 T5/27	27	2	42,20	46	30	15	21	
21 T5/28	28	2	43,75	50	32	15	21	
21 T5/30	30	2	46,95	50	34	15	21	
21 T5/32	32	2	50,10	55	38	15	21	
21 T5/36	36	2	56,45	62	38	15	21	
21 T5/40	40	2	62,85	67	40	15	21	
21 T5/42	42	2	66,00	73	40	15	21	
21 T5/44	44	3	69,20	-	45	15	21	
21 T5/48	48	3	75,55	-	50	15	21	
21 T5/60	60	3	94,65	-	65	15	21	

Pitch - Pas
Teilung - Paso **T5** (16 mm)

mm

code code Code código	teeth dents Zähne dientes	type type Typ tipo	S	Øe	H	W	Y	material materiel Werkstoff material
27 T5/10	10	2	15,05	18	8	21	27	Aluminium
27 T5/12	12	2	18,25	23	11	21	27	
27 T5/14	14	2	21,45	24	14	21	27	
27 T5/15	15	2	23,05	27	16	21	27	
27 T5/16	16	2	24,60	30	18	21	27	
27 T5/18	18	2	27,80	30	20	21	27	
27 T5/19	19	2	29,40	33	22	21	27	
27 T5/20	20	2	31,00	33	23	21	27	
27 T5/22	22	2	34,25	36	24	21	27	
27 T5/24	24	2	37,40	40	26	21	27	
27 T5/25	25	2	39,00	46	26	21	27	
27 T5/26	26	2	40,60	46	26	21	27	
27 T5/27	27	2	42,20	46	30	21	27	
27 T5/28	28	2	43,75	50	32	21	27	
27 T5/30	30	2	46,95	50	34	21	27	
27 T5/32	32	2	50,10	55	38	21	27	
27 T5/36	36	2	56,45	62	38	21	27	
27 T5/40	40	2	62,85	67	40	21	27	
27 T5/42	42	2	66,00	73	40	21	27	
27 T5/44	44	3	69,20	-	45	21	27	
27 T5/48	48	3	75,55	-	50	21	27	
27 T5/60	60	3	94,65	-	65	21	27	



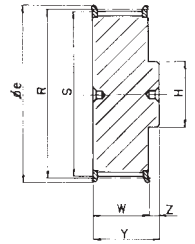
Pitch - Pas
Teilung - Paso **T5** (25 mm)

mm

code code Code código	teeth dents Zähne dientes	type type Typ tipo	S	Øe	H	W	Y	material materiel Werkstoff material
36 T5/10	10	2	15,05	18	8	30	36	Aluminium
36 T5/12	12	2	18,25	23	11	30	36	
36 T5/14	14	2	21,45	24	14	30	36	
36 T5/15	15	2	23,05	27	16	30	36	
36 T5/16	16	2	24,60	30	18	30	36	
36 T5/18	18	2	27,80	30	20	30	36	
36 T5/19	19	2	29,40	33	22	30	36	
36 T5/20	20	2	31,00	33	23	30	36	
36 T5/22	22	2	34,25	36	24	30	36	
36 T5/24	24	2	37,40	40	26	30	36	
36 T5/25	25	2	39,00	46	26	30	36	
36 T5/26	26	2	40,60	46	26	30	36	
36 T5/27	27	2	42,20	46	30	30	36	
36 T5/28	28	2	43,75	50	32	30	36	
36 T5/30	30	2	46,95	50	34	30	36	
36 T5/32	32	2	50,10	55	38	30	36	
36 T5/36	36	2	56,45	62	38	30	36	
36 T5/40	40	2	62,85	67	40	30	36	
36 T5/42	42	2	66,00	73	40	30	36	
36 T5/44	44	3	69,20	-	45	30	36	
36 T5/48	48	3	75,55	-	50	30	36	
36 T5/60	60	3	94,65	-	65	30	36	

Pitch - Pas
Teilung - Paso **T10** (16 mm)

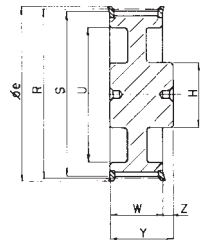
code code Code código	teeth dents Zähne dientes	type type Typ tipo	S	Øe	H	W	Y	material materiel Werkstoff material
31 T10/12	12	2	36,35	40	28	21	31	Aluminium
31 T10/14	14	2	42,70	46	32	21	31	
31 T10/15	15	2	45,90	50	32	21	31	
31 T10/16	16	2	49,05	55	35	21	31	
31 T10/18	18	2	55,45	62	40	21	31	
31 T10/19	19	2	58,60	67	44	21	31	
31 T10/20	20	2	61,80	67	46	21	31	
31 T10/22	22	2	68,15	73	52	21	31	
31 T10/24	24	2	74,55	80	58	21	31	
31 T10/25	25	2	77,70	84	60	21	31	
31 T10/26	26	2	80,90	88	60	21	31	
31 T10/27	27	2	84,10	88	60	21	31	
31 T10/28	28	2	87,25	94	60	21	31	
31 T10/30	30	2	93,65	98	60	21	31	
31 T10/32	32	2	100,00	108	65	21	31	
31 T10/36	36	2	112,75	118	70	21	31	
31 T10/40	40	4	125,45	129	80	21	31	
31 T10/44	44	5	138,20	-	88	21	31	
31 T10/48	48	5	150,95	-	95	21	31	
31 T10/60	60	5	189,10	-	110	21	31	



2

Pitch - Pas
Teilung - Paso **T10** (25 mm)

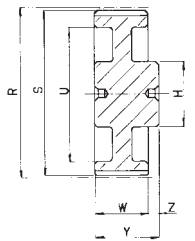
code code Code código	teeth dents Zähne dientes	type type Typ tipo	S	Øe	H	W	Y	material materiel Werkstoff material
40 T10/12	12	2	36,35	40	28	30	40	Aluminium
40 T10/14	14	2	42,70	46	32	30	40	
40 T10/15	15	2	45,90	50	32	30	40	
40 T10/16	16	2	49,05	55	35	30	40	
40 T10/18	18	2	55,45	62	40	30	40	
40 T10/19	19	2	58,60	67	44	30	40	
40 T10/20	20	2	61,80	67	46	30	40	
40 T10/22	22	2	68,15	73	52	30	40	
40 T10/24	24	2	74,55	80	58	30	40	
40 T10/25	25	2	77,70	84	60	30	40	
40 T10/26	26	2	80,90	88	60	30	40	
40 T10/27	27	2	84,10	88	60	30	40	
40 T10/28	28	2	87,25	94	60	30	40	
40 T10/30	30	2	93,65	98	60	30	40	
40 T10/32	32	2	100,00	108	65	30	40	
40 T10/36	36	2	112,75	118	70	30	40	
40 T10/40	40	4	125,45	129	80	30	40	
40 T10/44	44	5	138,20	-	88	30	40	
40 T10/48	48	5	150,95	-	95	30	40	
40 T10/60	60	5	189,10	-	110	30	40	



4

Pitch - Pas
Teilung - Paso **T10** (32 mm)

code code Code código	teeth dents Zähne dientes	type type Typ tipo	S	Øe	H	W	Y	material materiel Werkstoff material
47 T10/18	18	2	55,45	62	40	37	47	Aluminium
47 T10/19	19	2	58,60	67	44	37	47	
47 T10/20	20	2	61,80	67	46	37	47	
47 T10/22	22	2	68,15	73	52	37	47	
47 T10/24	24	2	74,55	80	58	37	47	
47 T10/25	25	2	77,70	84	60	37	47	
47 T10/26	26	2	80,90	88	60	37	47	
47 T10/27	27	2	84,10	88	60	37	47	
47 T10/28	28	2	87,25	94	60	37	47	
47 T10/30	30	2	93,65	98	60	37	47	
47 T10/32	32	2	100,00	108	65	37	47	
47 T10/36	36	2	112,75	118	70	37	47	
47 T10/40	40	4	125,45	129	80	37	47	
47 T10/44	44	5	138,20	-	88	37	47	
47 T10/48	48	5	150,95	-	95	37	47	
47 T10/60	60	5	189,10	-	110	37	47	



5

Pitch - Pas
Teilung - Paso **T10** (50 mm)

code code Code código	teeth dents Zähne dientes	type type Typ tipo	S	Øe	H	W	Y	material materiel Werkstoff material
66 T10/18	18	2	55,45	62	40	56	66	Aluminium
66 T10/19	19	2	58,60	67	44	56	66	
66 T10/20	20	2	61,80	67	46	56	66	
66 T10/22	22	2	68,15	73	52	56	66	
66 T10/24	24	2	74,55	80	58	56	66	
66 T10/25	25	2	77,70	84	60	56	66	
66 T10/26	26	2	80,90	88	60	56	66	
66 T10/27	27	2	84,10	88	60	56	66	
66 T10/28	28	2	87,25	94	60	56	66	
66 T10/30	30	2	93,65	98	60	56	66	
66 T10/32	32	2	100,00	108	65	56	66	
66 T10/36	36	2	112,75	118	70	56	66	
66 T10/40	40	4	125,45	129	80	56	66	
66 T10/44	44	5	138,20	-	88	56	66	
66 T10/48	48	5	150,95	-	95	56	66	
66 T10/60	60	5	189,10	-	110	56	66	

Pitch - Pas
Teilung - Paso **AT5** (10 mm)

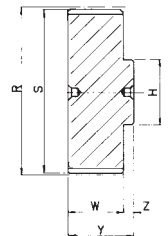
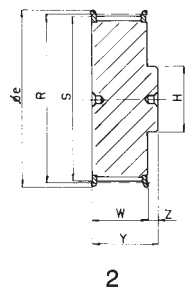
mm

code code Code código	teeth dents Zähne dientes	type type Typ tipo	S	Øe	H	W	Y	material materiel Werkstoff material
21 AT5/12	12	2	17,85	23	11	15	21	Aluminium
21 AT5/14	14	2	21,05	24	14	15	21	
21 AT5/15	15	2	22,65	27	16	15	21	
21 AT5/16	16	2	24,20	30	18	15	21	
21 AT5/18	18	2	27,40	30	20	15	21	
21 AT5/19	19	2	29,00	33	22	15	21	
21 AT5/20	20	2	30,60	33	23	15	21	
21 AT5/22	22	2	34,85	36	24	15	21	
21 AT5/24	24	2	37,00	40	26	15	21	
21 AT5/25	25	2	38,60	46	26	15	21	
21 AT5/26	26	2	40,20	46	26	15	21	
21 AT5/27	27	2	41,80	46	30	15	21	
21 AT5/28	28	2	43,35	50	32	15	21	
21 AT5/30	30	2	46,55	50	34	15	21	
21 AT5/32	32	2	49,70	55	38	15	21	
21 AT5/36	36	2	56,05	62	38	15	21	
21 AT5/40	40	2	62,45	67	40	15	21	
21 AT5/42	42	2	65,60	73	40	15	21	
21 AT5/44	44	3	68,80	-	45	15	21	
21 AT5/48	48	3	75,15	-	50	15	21	
21 AT5/60	60	3	94,25	-	65	15	21	

Pitch - Pas
Teilung - Paso **AT5** (16 mm)

mm

code code Code código	teeth dents Zähne dientes	type type Typ tipo	S	Øe	H	W	Y	material materiel Werkstoff material
27 AT5/12	12	2	17,85	23	11	21	27	Aluminium
27 AT5/14	14	2	21,05	24	14	21	27	
27 AT5/15	15	2	22,65	27	16	21	27	
27 AT5/16	16	2	24,20	30	18	21	27	
27 AT5/18	18	2	27,40	30	20	21	27	
27 AT5/19	19	2	29,00	33	22	21	27	
27 AT5/20	20	2	30,60	33	23	21	27	
27 AT5/22	22	2	34,85	36	24	21	27	
27 AT5/24	24	2	37,00	40	26	21	27	
27 AT5/25	25	2	38,60	46	26	21	27	
27 AT5/26	26	2	40,20	46	26	21	27	
27 AT5/27	27	2	41,80	46	30	21	27	
27 AT5/28	28	2	43,35	50	32	21	27	
27 AT5/30	30	2	46,55	50	34	21	27	
27 AT5/32	32	2	49,70	55	38	21	27	
27 AT5/36	36	2	56,05	62	38	21	27	
27 AT5/40	40	2	62,45	67	40	21	27	
27 AT5/42	42	2	65,60	73	40	21	27	
27 AT5/44	44	3	68,80	-	45	21	27	
27 AT5/48	48	3	75,15	-	50	21	27	
27 AT5/60	60	3	94,25	-	65	21	27	



Pitch - Pas
Teilung - Paso **AT5** (25 mm)

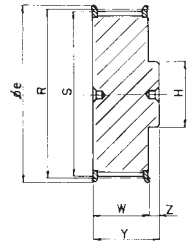
mm

code code Code código	teeth dents Zähne dientes	type type Typ tipo	S	Øe	H	W	Y	material materiel Werkstoff material
36 AT5/12	12	2	17,85	23	11	30	36	Aluminium
36 AT5/14	14	2	21,05	24	14	30	36	
36 AT5/15	15	2	22,65	27	16	30	36	
36 AT5/16	16	2	24,20	30	18	30	36	
36 AT5/18	18	2	27,40	30	20	30	36	
36 AT5/19	19	2	29,00	33	22	30	36	
36 AT5/20	20	2	30,60	33	23	30	36	
36 AT5/22	22	2	34,85	36	24	30	36	
36 AT5/24	24	2	37,00	40	26	30	36	
36 AT5/25	25	2	38,60	46	26	30	36	
36 AT5/26	26	2	40,20	46	26	30	36	
36 AT5/27	27	2	41,80	46	30	30	36	
36 AT5/28	28	2	43,35	50	32	30	36	
36 AT5/30	30	2	46,55	50	34	30	36	
36 AT5/32	32	2	49,70	55	38	30	36	
36 AT5/36	36	2	56,05	62	38	30	36	
36 AT5/40	40	2	62,45	67	40	30	36	
36 AT5/42	42	2	65,60	73	40	30	36	
36 AT5/44	44	3	68,80	-	45	30	36	
36 AT5/48	48	3	75,15	-	50	30	36	
36 AT5/60	60	3	94,25	-	65	30	36	

Pitch - Pas
Teilung - Paso **AT10** (16 mm)

mm

code code Code código	teeth dents Zähne dientes	type type Typ tipo	S	Øe	H	W	Y	material materiel Werkstoff material
31 AT10/15	15	2	45,90	50	32	21	31	Aluminium
31 AT10/16	16	2	49,05	55	35	21	31	
31 AT10/18	18	2	55,45	62	40	21	31	
31 AT10/19	19	2	58,60	67	44	21	31	
31 AT10/20	20	2	61,80	67	46	21	31	
31 AT10/22	22	2	68,15	73	52	21	31	
31 AT10/24	24	2	74,55	80	58	21	31	
31 AT10/25	25	2	77,70	84	60	21	31	
31 AT10/26	26	2	80,90	88	60	21	31	
31 AT10/27	27	2	84,10	88	60	21	31	
31 AT10/28	28	2	87,25	94	60	21	31	
31 AT10/30	30	2	93,65	98	60	21	31	
31 AT10/32	32	2	100,00	108	65	21	31	
31 AT10/36	36	2	112,75	118	70	21	31	
31 AT10/40	40	4	125,45	129	80	21	31	
31 AT10/44	44	5	138,20	-	88	21	31	
31 AT10/48	48	5	150,95	-	95	21	31	
31 AT10/60	60	5	189,10	-	110	21	31	

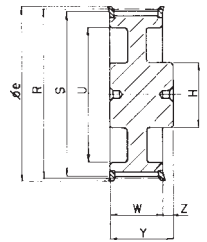


2

Pitch - Pas
Teilung - Paso **AT10** (25 mm)

mm

code code Code código	teeth dents Zähne dientes	type type Typ tipo	S	Øe	H	W	Y	material materiel Werkstoff material
40 AT10/15	15	2	45,90	50	32	30	40	Aluminium
40 AT10/16	16	2	49,05	55	35	30	40	
40 AT10/18	18	2	55,45	62	40	30	40	
40 AT10/19	19	2	58,60	67	44	30	40	
40 AT10/20	20	2	61,80	67	46	30	40	
40 AT10/22	22	2	68,15	73	52	30	40	
40 AT10/24	24	2	74,55	80	58	30	40	
40 AT10/25	25	2	77,70	84	60	30	40	
40 AT10/26	26	2	80,90	88	60	30	40	
40 AT10/27	27	2	84,10	88	60	30	40	
40 AT10/28	28	2	87,25	94	60	30	40	
40 AT10/30	30	2	93,65	98	60	30	40	
40 AT10/32	32	2	100,00	108	65	30	40	
40 AT10/36	36	2	112,75	118	70	30	40	
40 AT10/40	40	4	125,45	129	80	30	40	
40 AT10/44	44	5	138,20	-	88	30	40	
40 AT10/48	48	5	150,95	-	95	30	40	
40 AT10/60	60	5	189,10	-	110	30	40	

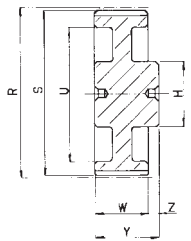


4

Pitch - Pas
Teilung - Paso **AT10** (32 mm)

mm

code code Code código	teeth dents Zähne dientes	type type Typ tipo	S	Øe	H	W	Y	material materiel Werkstoff material
47 AT10/15	15	2	45,90	50	32	37	47	Aluminium
47 AT10/16	16	2	49,05	55	35	37	47	
47 AT10/18	18	2	55,45	62	40	37	47	
47 AT10/19	19	2	58,60	67	44	37	47	
47 AT10/20	20	2	61,80	67	46	37	47	
47 AT10/22	22	2	68,15	73	52	37	47	
47 AT10/24	24	2	74,55	80	58	37	47	
47 AT10/25	25	2	77,70	84	60	37	47	
47 AT10/26	26	2	80,90	88	60	37	47	
47 AT10/27	27	2	84,10	88	60	37	47	
47 AT10/28	28	2	87,25	94	60	37	47	
47 AT10/30	30	2	93,65	98	60	37	47	
47 AT10/32	32	2	100,00	108	65	37	47	
47 AT10/36	36	2	112,75	118	70	37	47	
47 AT10/40	40	4	125,45	129	80	37	47	
47 AT10/44	44	5	138,20	-	88	37	47	
47 AT10/48	48	5	150,95	-	95	37	47	
47 AT10/60	60	5	189,10	-	110	37	47	



5

Pitch - Pas
Teilung - Paso **AT10** (50 mm)

mm

code code Code código	teeth dents Zähne dientes	type type Typ tipo	S	Øe	H	W	Y	material materiel Werkstoff material
66 AT10/15	15	2	45,90	50	32	56	66	Aluminium
66 AT10/16	16	2	49,05	55	35	56	66	
66 AT10/18	18	2	55,45	62	40	56	66	
66 AT10/19	19	2	58,60	67	44	56	66	
66 AT10/20	20	2	61,80	67	46	56	66	
66 AT10/22	22	2	68,15	73	52	56	66	
66 AT10/24	24	2	74,55	80	58	56	66	
66 AT10/25	25	2	77,70	84	60	56	66	
66 AT10/26	26	2	80,90	88	60	56	66	
66 AT10/27	27	2	84,10	88	60	56	66	
66 AT10/28	28	2	87,25	94	60	56	66	
66 AT10/30	30	2	93,65	98	60	56	66	
66 AT10/32	32	2	100,00	108	65	56	66	
66 AT10/36	36	2	112,75	118	70	56	66	
66 AT10/40	40	4	125,45	129	80	56	66	
66 AT10/44	44	5	138,20	-	88	56	66	
66 AT10/48	48	5	150,95	-	95	56	66	
66 AT10/60	60	5	189,10	-	110	56	66	