

DYSTRYBUTOR



TECHNICAL

GRZEGORZ TĘGOS

TECHNIKA NAPĘDU I TRANSMISJI MOCY

62-600 Koło, ul. Toruńska 212
tel. 0-63/ 27 25 478 / fax. 0-63/ 26 16 258

www.technical.pl
biuro@technical.pl

Sklep internetowy
www.sklep.technical.pl

**Pierścienie
rozprężno - zaciskowe
ze stali
nierdzewnej i zwykłej**

STAINLESS STEEL TAPER BUSH (1.4305)

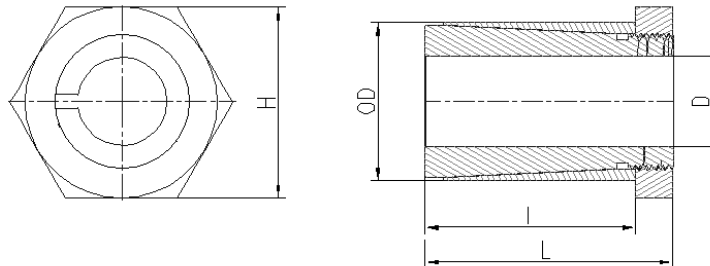
Field of Application: Machine industry
Advantages: Simple, easy maintenance, axial and radial positioning on shaft
Typical applications: Fixing gears, pulleys on the shaft



Type	Material	D (mm)	OD (mm)	L (mm)	l (mm)	H (mm)	Male thread	Max. Torque
BS-6.35	KO	6.35	10	15	12.5	10	M8x0.5	7
BS-9.52	KO	9.52	14	22	19	17	M12x1	14
BS-15.88	KO	15.88	23	28	23	27	M20x1	26

BS-4	KO	4	8	15	12.5	8	M6x0.5	3
BS-5	KO	5	10	15	12.5	10	M8x0.5	4
BS-6	KO	6	10	15	12.5	10	M8x0.5	7
BS-7	KO	7	12	15	12	12	M10x0.75	8
BS-8	KO	8	14	22	19	17	M12x1	14
BS-9	KO	9	14	22	19	17	M12x1	14
BS-10	KO	10	17	22	18.5	19	M15x1	18
BS-11	KO	11	17	22	18.5	19	M15x1	18
BS-12	KO	12	17	22	18.5	19	M15x1	18
BS-14	KO	14	20	28	23	22	M17x1	24
BS-15	KO	15	20	28	23	22	M17x1	24
BS-16	KO	16	23	28	23	27	M20x1	26
BS-17	KO	17	23	28	23	27	M20x1	26
BS-19	KO	19	25	28	23	27	M22x1	29
BS-20	KO	20	28	28	23	30	M22x1	31

KO= Stainless Steel



CARBON STEEL TAPER BUSH (ETG-100)

Field of Application: Machine industry
Advantages: Simple easy maintenance, axial and radial positioning on shaft
Typical applications: Fixing gears, pulleys on the shaft



Type	Material	D (mm)	OD (mm)	L (mm)	l (mm)	H (mm)	B (mm)	Max. Torque
BT-6	ST	6	16	19	9.5	13	3	16
BT-8	ST	8	19	22	11	16	3	23
BT-9	ST	9	19	22	11	16	3	26
BT-10	ST	10	22.5	25.5	12.5	19	5	30
BT-11	ST	11	22.5	25.5	12.5	19	5	34
BT-12	ST	12	22.5	25.5	12.5	19	5	39
BT-14	ST	14	25.5	28.5	16	22	5	42
BT-15	ST	15	25.5	28.5	16	22	5	45
BT-16	ST	16	25.5	28.5	16	22	5	50
BT-20	ST	20	45	47.5	21.5	44.5	11	290
BT-22	ST	22	45	47.5	21.5	44.5	11	315
BT-24	ST	24	45	47.5	21.5	44.5	11	380
BT-25	ST	25	45	47.5	21.5	44.5	11	390

ST= Carbon Steel

