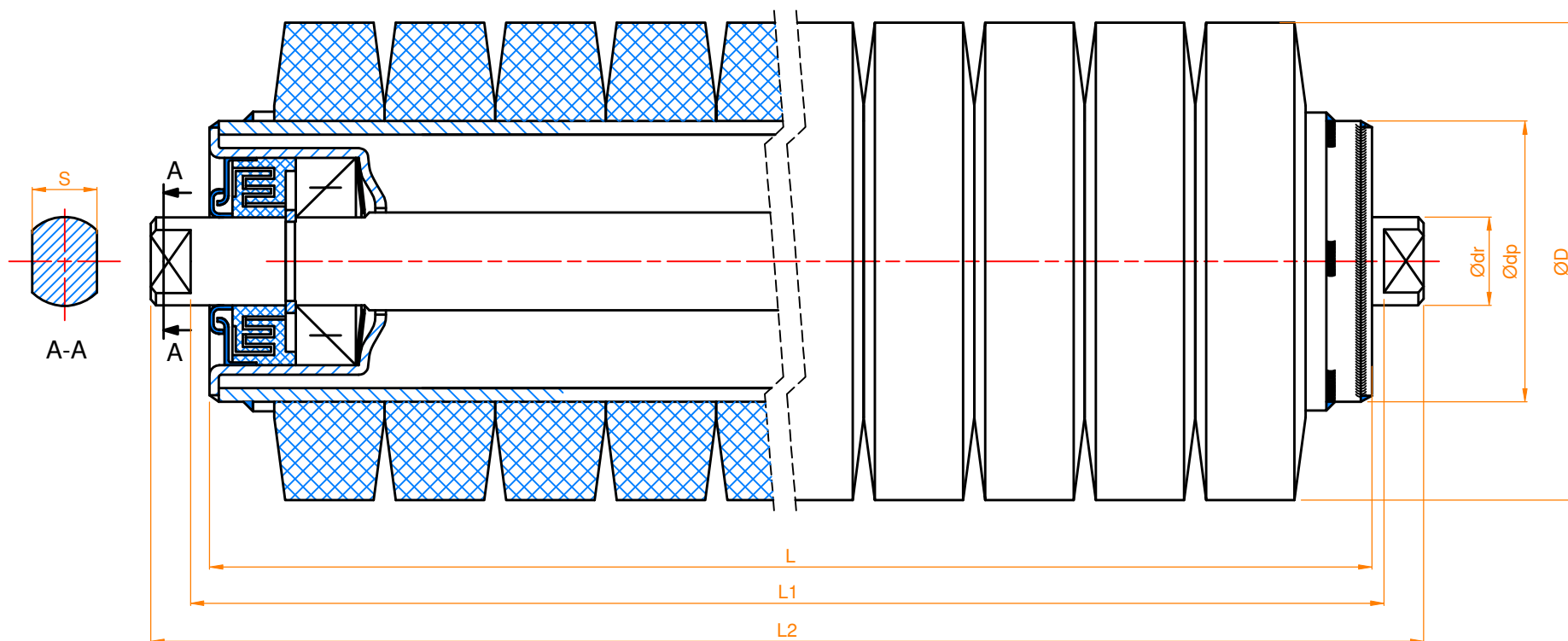


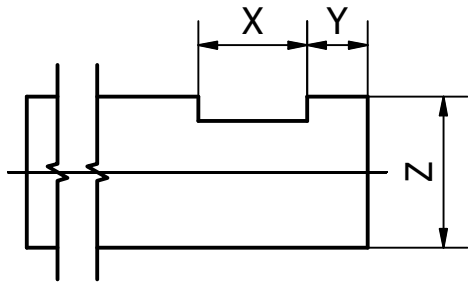
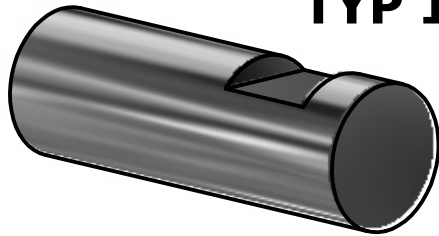
Krażniki pierścieniowe - rolki pierścieniowe do podpierania taśm transportujących w transporterach taśmowych powierzchniowych

KRAŻNIK PIERŚCIENIOWY

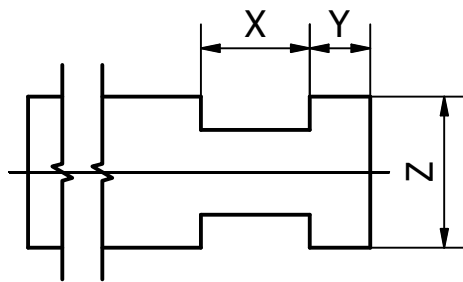
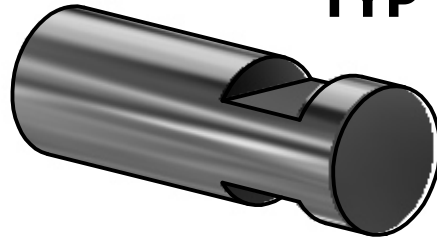


# KOŃCÓWKI OSI

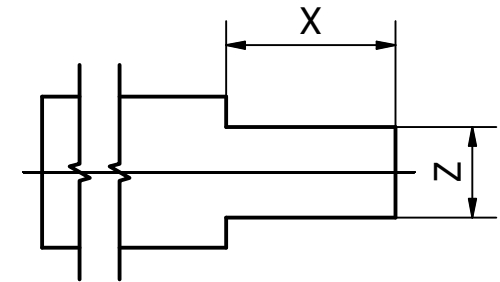
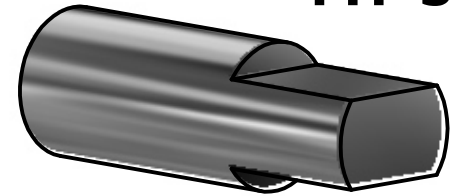
**TYP 1**



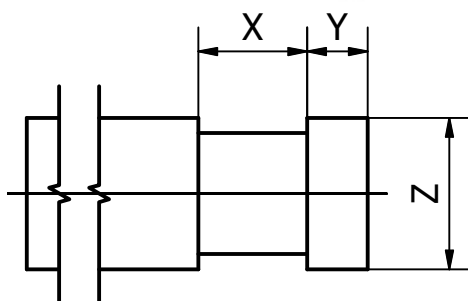
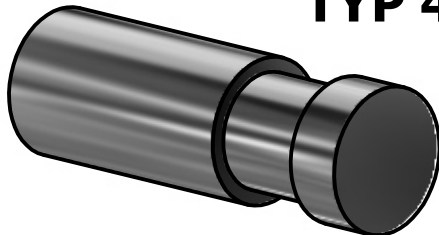
**TYP 2**



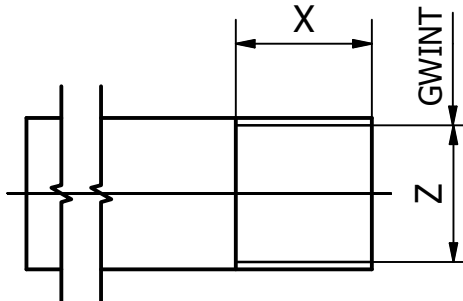
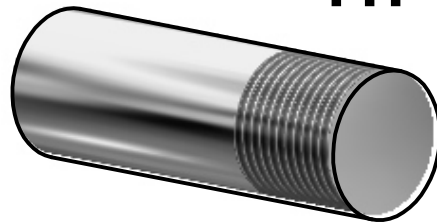
**TYP 3**



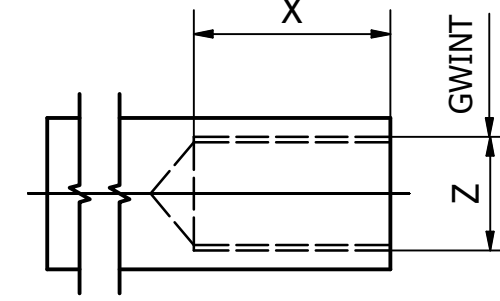
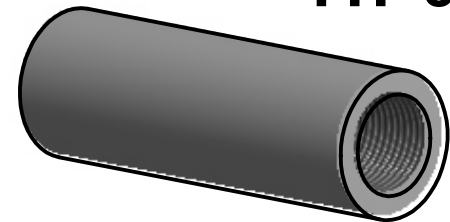
**TYP 4**



**TYP 5**

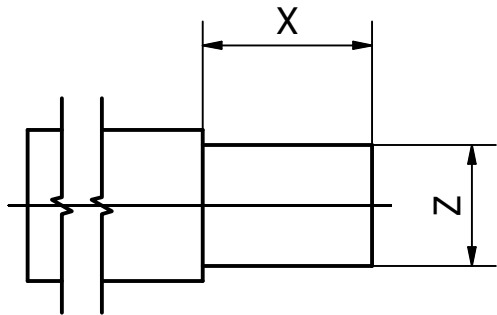
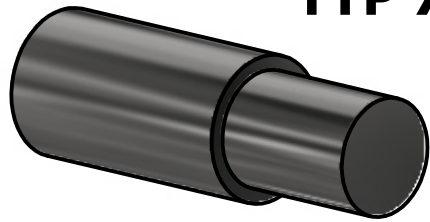


**TYP 6**

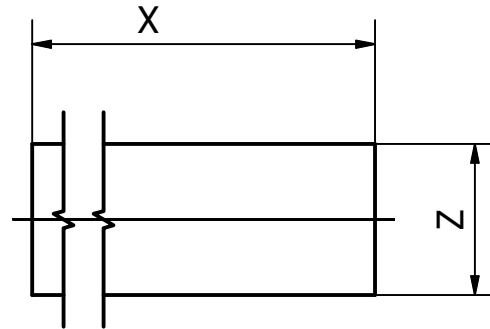


# KOŃCÓWKI OSI

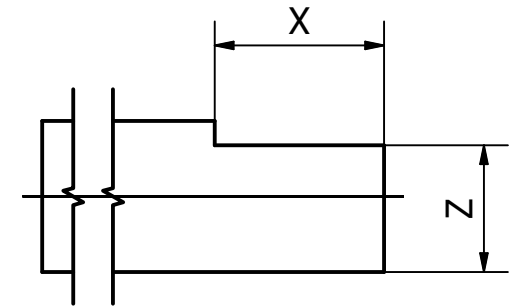
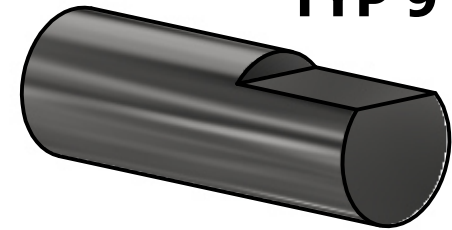
**TYP 7**



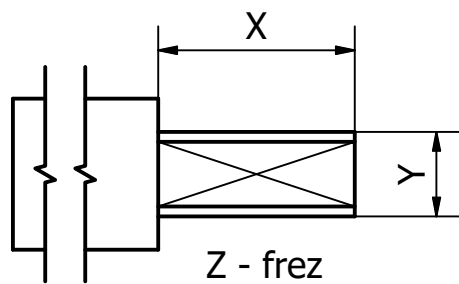
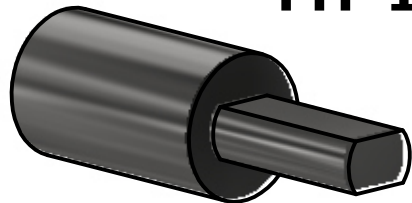
**TYP 8**



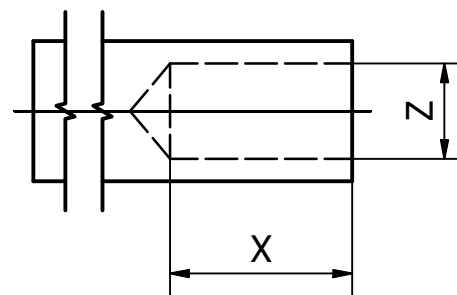
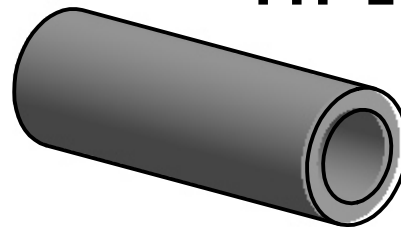
**TYP 9**



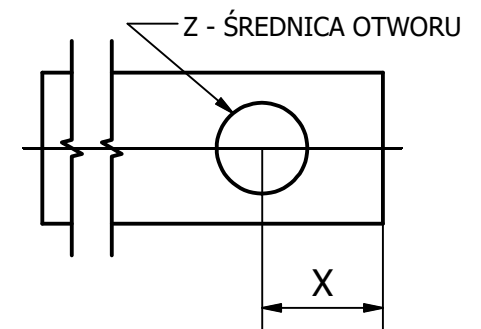
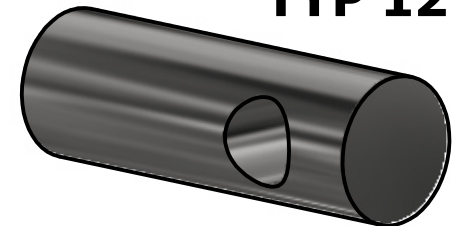
**TYP 10**



**TYP 11**



**TYP 12**



## Przykład zamówienia i oznaczenia krążnika

